

À des fins de recherche uniquement

# Anticorps Polyclonal de lapin anti-LETM1



Numéro de catalogue: 16024-1-AP

Phare

11 Publications

## Informations de base

Numéro de catalogue:  
16024-1-AP

Taille:  
150ul, Concentration: 1000 µg/ml by Nanodrop and 347 µg/ml by Bradford method using BSA as the standard;

Hôte:  
Lapin

Isotype:  
IgG

Immunogen Catalog Number:  
AG8861

Numéro d'acquisition GenBank:  
BC021208

Identification du gène (NCBI):

Nom complet:  
leucine zipper-EF-hand containing transmembrane protein 1

MW calculé:  
739 aa, 83 kDa

MW observés:  
83 kDa

Méthode de purification:  
Purification par affinité contre l'antigène

Dilutions recommandées:  
WB 1:2000-1:10000  
IHC 1:50-1:500  
IF 1:50-1:500

## Applications

Applications testées:  
IF, IHC, WB, ELISA

Demandes citées:  
CoIP, IF, WB

Spécificité de l'espèce:  
Humain

Espèces citées:  
Humain, rat, souris

**Remarque-IHC: il est suggéré de démasquer l'antigène avec un tampon de TE buffer pH 9,0; (\*) A défaut, 'le démasquage de l'antigène peut être effectué avec un tampon citrate pH 6,0.**

Contrôles positifs:

WB : cellules A549, cellules HEK-293, cellules HeLa, cellules HepG2, cellules Jurkat, cellules Ramos

IHC : tissu de cancer du sein humain, tissu de cancer de l'œsophage humain

IF : cellules HeLa,

## Informations générales

LETM1 is a mitochondrial inner membrane protein. It functions to maintain the mitochondrial tubular shapes and is required for normal mitochondrial morphology and cellular viability. It served as an anchor protein for complex formation between mitochondria and ribosome, and regulated mitochondrial biogenesis. It was also identified in Wolf-Hirschhorn syndrome, and was deleted in nearly all patients with the syndrome. A recent study determined that adenovirus-mediated LETM1 may provide a useful target for designing lung tumor prevention and treatment.

## Publications notables

Autrice	Pubmed ID	Journal	Application
Giulia Rossetti	34559558	Sci Adv	WB
Gayathri K Natarajan	33041851	Front Physiol	WB
Yoshihiro Miyagawa	33110478	Oncotarget	WB

## Stockage

Stockage:

Stocker à -20°C. Stable pendant un an après l'expédition.

Tampon de stockage:

PBS avec azoture de sodium à 0,02 % et glycérol à 50 % pH 7,3

L'aliquotage n'est pas nécessaire pour le stockage à -20C

\*\*\* Les 20ul contiennent 0,1% de BSA.

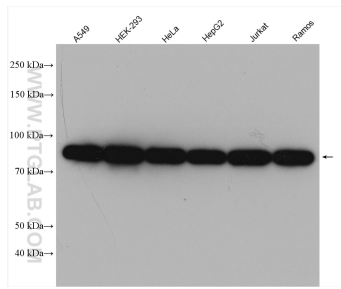
For technical support and original validation data for this product please contact:

T: 1 (888) 4PTGLAB (1-888-478-4522) (toll free in USA), or 1(312) 455-8498 (outside USA)

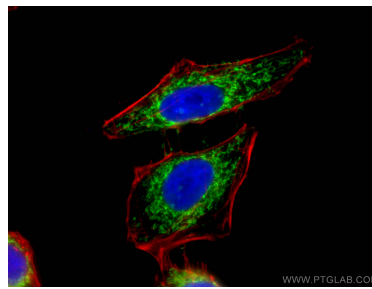
E: proteintech@ptglab.com  
W: ptglab.com

This product is exclusively available under Proteintech Group brand and is not available to purchase from any other manufacturer.

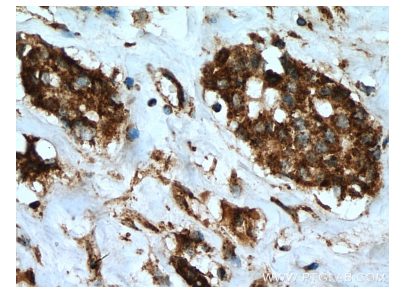
## Données de validation sélectionnées



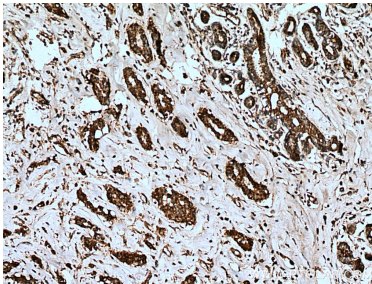
Various lysates were subjected to SDS PAGE followed by western blot with 16024-1-AP (LETM1 antibody) at dilution of 1:8000 incubated at room temperature for 1.5 hours.



Immunofluorescent analysis of (4% PFA) fixed HeLa cells using 16024-1-AP (LETM1 antibody), at dilution of 1:200 and CoraLite®488-Conjugated AffiniPure Goat Anti-Rabbit IgG(H+L). F-actin is stained using CL555-phalloidin (red) and DNA is stained by DAPI (blue).



Immunohistochemical analysis of paraffin-embedded human breast cancer tissue slide using 16024-1-AP (LETM1 antibody) at dilution of 1:200 (under 40x lens). Heat mediated antigen retrieval with Tris-EDTA buffer (pH 9.0).



Immunohistochemical analysis of paraffin-embedded human breast cancer tissue slide using 16024-1-AP (LETM1 antibody) at dilution of 1:200 (under 10x lens). Heat mediated antigen retrieval with Tris-EDTA buffer (pH 9.0).