

À des fins de recherche uniquement

Anticorps Polyclonal de lapin anti- ERGIC3



Numéro de catalogue: 16029-1-AP

1 Publications

Informations de base

Numéro de catalogue:

16029-1-AP

Taille:

150ul, Concentration: 550 µg/ml by Nanodrop and 280 µg/ml by Bradford method using BSA as the standard;

Hôte:

Lapin

Isotype:

IgG

Immunogen Catalog Number:

AG8893

Numéro d'acquisition GenBank:

BC009765

Identification du gène (NCBI):

51614

Nom complet:

ERGIC and golgi 3

MW calculé

383 aa, 43 kDa

MW observés:

50 kDa

Méthode de purification:

Purification par affinité contre l'antigène

Dilutions recommandées:

WB 1:2000-1:10000

IHC 1:50-1:500

IF 1:20-1:200

Applications

Applications testées:

IF, IHC, WB, ELISA

Demandes citées:

WB

Spécificité de l'espèce:

Humain, rat, souris

Espèces citées:

Humain

Remarque-IHC: il est suggéré de démasquer l'antigène avec un tampon de TE buffer pH 9,0; (*) A défaut, le démasquage de l'antigène peut être effectué avec un tampon citrate pH 6,0.

Contrôles positifs:

WB : cellules HepG2, cellules K-562, cellules MCF-7

IHC : tissu cérébral de souris,

IF : cellules HepG2,

Informations générales

The ERGIC3 protein was also over-expressed in lung cancer tissues and cultured cells, and expression of ERGIC3 was correlated with the differentiated degree and histological type of lung cancer (PMID: 23374247). The up-regulation of ERGIC3 could promote cellular migration and proliferation in vitro. ERGIC3 may play an active role in the development and progression of lung cancer (PMID: 23374247). The MW of this protein is 50 kDa, and this antibody specially recognises the 50 kDa protein.

Publications notables

Autrice	Pubmed ID	Journal	Application
Yaqin Deng	34793833	J Biol Chem	WB

Stockage

Stockage:

Stocker à -20°C. Stable pendant un an après l'expédition.

Tampon de stockage:

PBS avec azoture de sodium à 0,02 % et glycérol à 50 % pH 7,3

L'aliquotage n'est pas nécessaire pour le stockage à -20C

*** Les 20ul contiennent 0,1% de BSA.

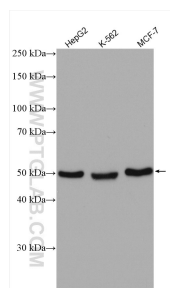
For technical support and original validation data for this product please contact:

T: 1 (888) 4PTGLAB (1-888-478-4522) (toll free in USA), or 1(312) 455-8498 (outside USA)

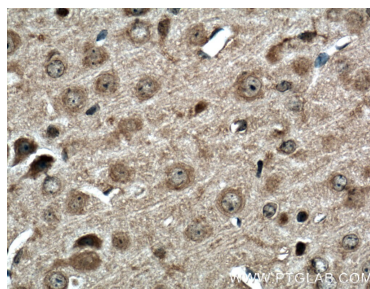
E: proteintech@ptglab.com
W: ptglab.com

This product is exclusively available under Proteintech Group brand and is not available to purchase from any other manufacturer.

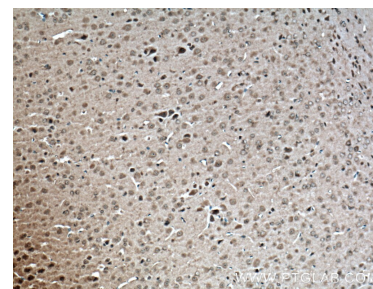
Données de validation sélectionnées



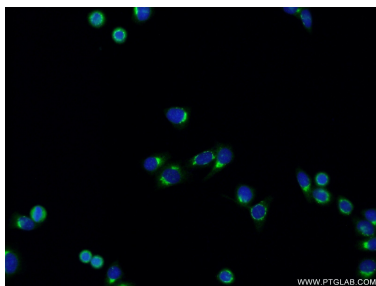
Various lysates were subjected to SDS PAGE followed by western blot with 16029-1-AP (ERGIC3 antibody) at dilution of 1:5000 incubated at room temperature for 1.5 hours.



Immunohistochemical analysis of paraffin-embedded mouse brain tissue slide using 16029-1-AP (ERGIC3 antibody) at dilution of 1:200 (under 40x lens. Heat mediated antigen retrieval with Tris-EDTA buffer (pH 9.0).



Immunohistochemical analysis of paraffin-embedded mouse brain tissue slide using 16029-1-AP (ERGIC3 antibody) at dilution of 1:200 (under 10x lens. Heat mediated antigen retrieval with Tris-EDTA buffer (pH 9.0).



Immunofluorescent analysis of HepG2 cells using 16029-1-AP (ERGIC3 antibody) at dilution of 1:50 and Alexa Fluor 488-conjugated AffiniPure Goat Anti-Rabbit IgG(H+L).