

À des fins de recherche uniquement

# Anticorps Polyclonal de lapin anti-PSMD7



Numéro de catalogue: 16034-1-AP

Phare

1 Publications

## Informations de base

Numéro de catalogue:  
16034-1-AP

Taille:  
150ul, Concentration: 300 µg/ml by Nanodrop and 267 µg/ml by Bradford method using BSA as the standard;

Hôte:  
Lapin

Isotype:  
IgG

Immunogen Catalog Number:  
AG8905

Numéro d'acquisition GenBank:  
BC012606

Identification du gène (NCBI):  
5713

Nom complet:  
proteasome (prosome, macropain)  
26S subunit, non-ATPase, 7

MW calculé  
324 aa, 37 kDa

MW observés:  
37 kDa

Méthode de purification:  
Purification par affinité contre l'antigène

Dilutions recommandées:  
WB 1:500-1:3000  
IP 0.5-4.0 ug for IP and 1:500-1:1000 for WB  
IF 1:10-1:100

## Applications

Applications testées:  
FC, IF, IP, WB, ELISA

Demandes citées:  
CoIP, WB

Spécificité de l'espèce:  
Humain, rat, souris

Espèces citées:  
Humain

Contrôles positifs:

WB : cellules HeLa, cellules K-562, tissu hépatique de rat, tissu hépatique de souris

IP : cellules K-562,

IF : cellules HepG2,

## Informations générales

Proteasome 26S subunit, non-ATPase 7 (PSMD7), an ATP-independent component of the 19S regulatory subunit, is a member of the JAMM/MPN domain-associated metallopeptidase (JAMM) DUB family. PSMD7, as a core component of the 26S proteasome, is critical for the degradation of ubiquitinated proteins in the proteasome. PSMD7 arrests cell cycle in the G2/M phase during HIV infection. The molecular weight of PSMD7 is 37 kDa. (PMID: 34512150, 34234864)

## Publications notables

Autrice	Pubmed ID	Journal	Application
Jianjiang Wang	34512150	Int J Biol Sci	WB, CoIP

## Stockage

Stockage:  
Stocker à -20°C. Stable pendant un an après l'expédition.

Tampon de stockage:  
PBS avec azoture de sodium à 0,02 % et glycérol à 50 % pH 7,3  
L'aliquotage n'est pas nécessaire pour le stockage à -20C

\*\*\* Les 20ul contiennent 0,1% de BSA.

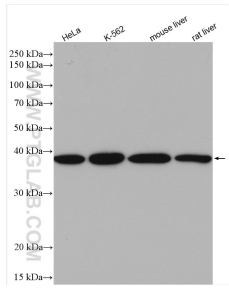
For technical support and original validation data for this product please contact:

T: 1 (888) 4PTGLAB (1-888-478-4522) (toll free in USA), or 1(312) 455-8498 (outside USA)

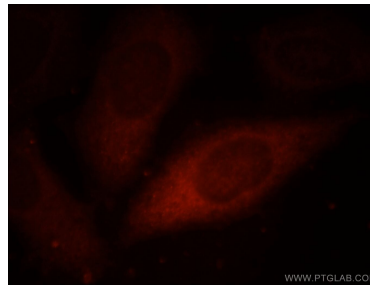
E: proteintech@ptglab.com  
W: ptglab.com

This product is exclusively available under Proteintech Group brand and is not available to purchase from any other manufacturer.

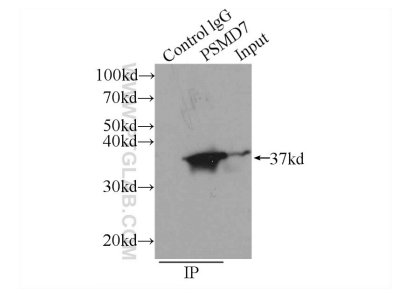
## Données de validation sélectionnées



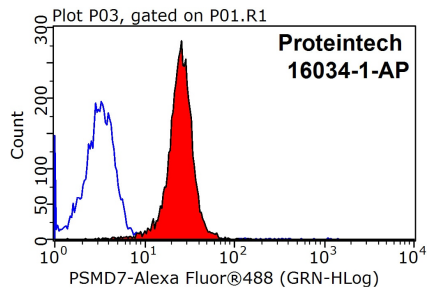
Various lysates were subjected to SDS PAGE followed by western blot with 16034-1-AP (PSMD7 antibody) at dilution of 1:1500 incubated at room temperature for 1.5 hours.



Immunofluorescent analysis of HepG2 cells, using PSMD7 antibody 16034-1-AP at 1:25 dilution and Rhodamine-labeled goat anti-rabbit IgG (red).



IP Result of anti-PSMD7 (IP:16034-1-AP, 3ug; Detection:16034-1-AP 1:500) with K-562 cells lysate 2400ug.



1X10<sup>6</sup> HepG2 cells were stained with 0.2ug PSMD7 antibody (16034-1-AP, red) and control antibody (blue). Fixed with 90% MeOH blocked with 3% BSA (30 min). Alexa Fluor 488-conjugated AffiniPure Goat Anti-Rabbit IgG(H+L) with dilution 1:1500.