

À des fins de recherche uniquement

Anticorps Polyclonal de lapin anti-IFFO1



Numéro de catalogue: 16041-1-AP

1 Publications

Informations de base

Numéro de catalogue: 16041-1-AP	Numéro d'acquisition GenBank: BC004384	Méthode de purification: Purification par affinité contre l'antigène
Taille: 150ul , Concentration: 1000 µg/ml by Nanodrop and 520 µg/ml by Bradford method using BSA as the standard;	Identification du gène (NCBI): 25900	Dilutions recommandées: WB 1:500-1:2000 IHC 1:20-1:200 IF 1:10-1:100
Hôte: Lapin	Nom complet: intermediate filament family orphan 1	
Isotype: IgG	MW calculé: 62 kDa	
Immunogen Catalog Number: AG8915	MW observés: 75-85 kDa	

Applications

Applications testées:

IF, IHC, WB, ELISA

Demandes citées:

IHC

Spécificité de l'espèce:

Humain, rat, souris

Espèces citées:

Humain

Remarque-IHC: il est suggéré de démasquer l'antigène avec un tampon de TE buffer pH 9,0; (*) A défaut, 'le démasquage de l'antigène peut être 'effectué avec un tampon citrate pH 6,0.

Contrôles positifs:

WB : tissu cérébral de souris, tissu cérébral humain, tissu testiculaire de souris

IHC : tissu cérébral humain,

IF : cellules HeLa,

Informations générales

IFFO1, also named as IFFO and Tumor antigen HOM-TES-103, is a member of the intermediate filament family which consists of primordial components of the cytoskeleton and nuclear envelope that are mainly distributed in the nucleus, followed by the cytoskeleton and cytoplasm. IFFO1 in the nucleus was identified to combine with both XRCC4 and the nuclear lamina protein lamin A/C to be involved in nonhomologous DNA end joining (NHEJ). The expression of IFFO1 is associated with tumor progression. IFFO1 could be used as a potential marker to differentiate malignant ascites cell-free tumor DNA (cftDNA) of ovarian cancer from benign controls.

Publications notables

Autrice	Pubmed ID	Journal	Application
Ye Zhang	36257380	Cancer Lett	IHC

Stockage

Stockage:

Stocker à -20°C. Stable pendant un an après l'expédition.

Tampon de stockage:

PBS avec azoture de sodium à 0,02 % et glycérol à 50 % pH 7,3

L'aliquotage n'est pas nécessaire pour le stockage à -20C

*** Les 20ul contiennent 0,1% de BSA.

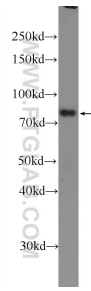
For technical support and original validation data for this product please contact:

T: 1 (888) 4PTGLAB (1-888-478-4522) (toll free in USA), or 1(312) 455-8498 (outside USA)

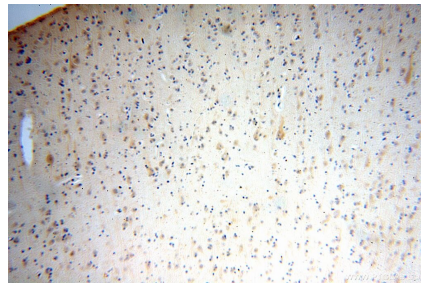
E: proteintech@ptglab.com
W: ptglab.com

This product is exclusively available under Proteintech Group brand and is not available to purchase from any other manufacturer.

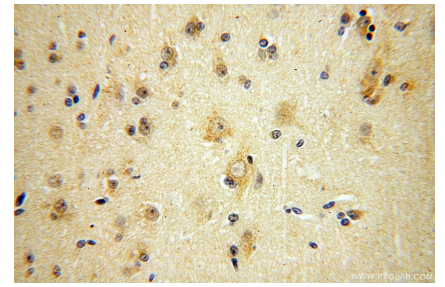
Données de validation sélectionnées



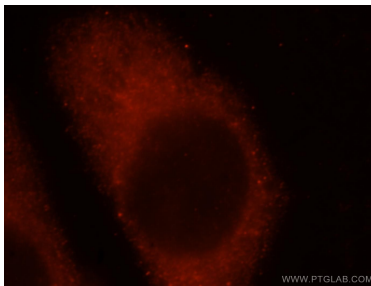
mouse brain tissue were subjected to SDS PAGE followed by western blot with 16041-1-AP (IFFO1 Antibody) at dilution of 1:1000 incubated at room temperature for 1.5 hours.



Immunohistochemical analysis of paraffin-embedded human brain using 16041-1-AP (IFFO1 antibody) at dilution of 1:100 (under 10x lens).



Immunohistochemical analysis of paraffin-embedded human brain using 16041-1-AP (IFFO1 antibody) at dilution of 1:100 (under 40x lens).



Immunofluorescent analysis of HeLa cells, using IFFO1 antibody 16041-1-AP at 1:25 dilution and Rhodamine-labeled goat anti-rabbit IgG (red).