

À des fins de recherche uniquement

Anticorps Polyclonal de lapin anti-BCCIP



Numéro de catalogue: 16043-1-AP

Phare

7 Publications

Informations de base

Numéro de catalogue:
16043-1-AP

Taille:
150ul, Concentration: 600 µg/ml by Nanodrop and 333 µg/ml by Bradford method using BSA as the standard;

Hôte:
Lapin

Isotype:
IgG

Immunogen Catalog Number:
AG8934

Numéro d'acquisition GenBank:
BC009771

Identification du gène (NCBI):
56647

Nom complet:
BRCA2 and CDKN1A interacting protein

MW calculé:
314 aa, 36 kDa

MW observés:
50-58 kDa

Méthode de purification:
Purification par affinité contre l'antigène

Dilutions recommandées:
WB 1:500-1:1000
IP 0.5-4.0 ug for IP and 1:500-1:1000 for WB
IF 1:50-1:500

Applications

Applications testées:
IF, IP, WB, ELISA

Demandes citées:
IF, IHC, WB

Spécificité de l'espèce:
Humain, rat, souris

Espèces citées:
Humain

Contrôles positifs:

WB : cellules HeLa, cellules A549

IP : cellules HeLa,

IF : cellules HeLa,

Informations générales

BCCIP (or TOK1) is isolated as a BRCA2- and CDKN1A (p21)-interacting protein and is implicated in homologous recombination (HR) pathway and inhibition of DNA replication stress. BCCIP is an evolutionarily conserved nuclear protein with multiple interacting domains. BCCIP deficiency in mice impaired embryonic and postnatal neural development, causing severe ataxia, cerebral and cerebellar defects, and microcephaly, which are associated with spontaneous DNA damage and subsequent cell death in the proliferative cell populations of the neural system during embryogenesis. BCCIP is essential for maintaining the transactivation activity of wild type p53 suggesting a potential role of BCCIP in cancer etiology.

Publications notables

Autrice	Pubmed ID	Journal	Application
Yi Sui	29932276	FEBS J	WB, IF
Fang Wang	32736693	Biochem Biophys Res Commun	WB
Jiaming Su	27535137	Protein Cell	WB, IF

Stockage

Stockage:

Stocker à -20°C. Stable pendant un an après l'expédition.

Tampon de stockage:

PBS avec azoture de sodium à 0,02 % et glycérol à 50 % pH 7,3

L'aliquotage n'est pas nécessaire pour le stockage à -20°C

*** Les 20ul contiennent 0,1% de BSA.

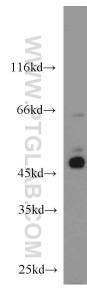
For technical support and original validation data for this product please contact:

T: 1 (888) 4PTGLAB (1-888-478-4522) (toll free in USA), or 1(312) 455-8498 (outside USA)

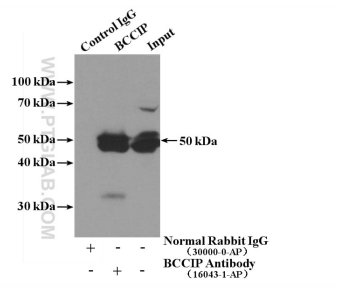
E: proteintech@ptglab.com
W: ptglab.com

This product is exclusively available under Proteintech Group brand and is not available to purchase from any other manufacturer.

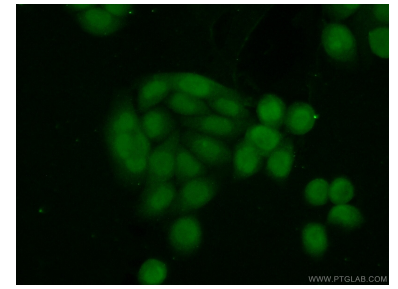
Données de validation sélectionnées



HeLa cells were subjected to SDS PAGE followed by western blot with 16043-1-AP (BCCIP antibody) at dilution of 1:800 incubated at room temperature for 1.5 hours.



IP Result of anti-BCCIP (IP:16043-1-AP, 4ug; Detection:16043-1-AP 1:800) with HeLa cells lysate 3200ug.



Immunofluorescent analysis of (10% Formaldehyde) fixed HeLa cells using 16043-1-AP (BCCIP antibody) at dilution of 1:50 and Alexa Fluor 488-conjugated AffiniPure Goat Anti-Rabbit IgG(H+L).