

À des fins de recherche uniquement

Anticorps Polyclonal de lapin anti-SEC24C



Numéro de catalogue: 16073-1-AP

Informations de base

Numéro de catalogue: 16073-1-AP	Numéro d'acquisition GenBank: BC018928	Méthode de purification: Purification par affinité contre l'antigène
Taille: 150ul , Concentration: 133 µg/ml by Bradford method using BSA as the standard;	Identification du gène (NCBI): 9632	Dilutions recommandées: WB 1:500-1:1000 IF 1:10-1:100
Hôte: Lapin	Nom complet: SEC24 family, member C (S. cerevisiae)	
Isotype: IgG	MW calculé: 1094 aa, 118 kDa	
Immunogen Catalog Number: AG9030	MW observés: 110-120 kDa	

Applications

Applications testées: IF, WB, ELISA	Contrôles positifs: WB : cellules HeLa, IF : cellules HeLa,
Spécificité de l'espèce: Humain, rat, souris	

Informations générales

COPII-coated vesicles mediate anterograde transport from the ER to the Golgi apparatus. COPII is composed of three parts: two coat protein complexes (Sec23/24 complex and Sec13/31 complex) and one small GTP-binding protein, Sar1 (PMID: 9568718). Sec24 subunit of the coat complex has been implicated in cargo recognition (PMID: 17316621). In mammal cells there are four Sec24 isoforms, termed Sec24A, Sec24B, Sec24C, and Sec24D (PMID: 10329445).

Stockage

Stockage:
Stocker à -20°C. Stable pendant un an après l'expédition.
Tampon de stockage:
PBS avec azoture de sodium à 0,02 % et glycérol à 50 % pH 7,3
L'aliquotage n'est pas nécessaire pour le stockage à -20C

***** Les 20ul contiennent 0,1% de BSA.**

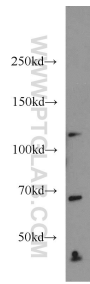
For technical support and original validation data for this product please contact:

T: 1 (888) 4PTGLAB (1-888-478-4522) (toll free in USA), or 1(312) 455-8498 (outside USA)

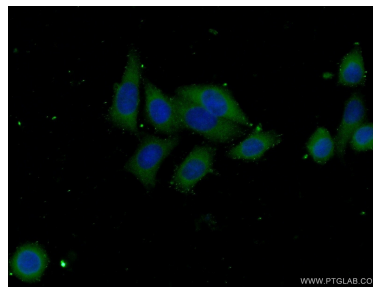
E: proteintech@ptglab.com
W: ptglab.com

This product is exclusively available under Proteintech Group brand and is not available to purchase from any other manufacturer.

Données de validation sélectionnées



HeLa cells were subjected to SDS PAGE followed by western blot with 16073-1-AP (SEC24C antibody) at dilution of 1:500 incubated at room temperature for 1.5 hours.



Immunofluorescent analysis of (-20°C Ethanol) fixed HeLa cells using 16073-1-AP (SEC24C antibody) at dilution of 1:25 and Alexa Fluor 488-conjugated AffiniPure Goat Anti-Rabbit IgG(H+L).