

À des fins de recherche uniquement

Anticorps Polyclonal de lapin anti-S100A4



Numéro de catalogue: 16105-1-AP

Phare

44 Publications

Informations de base

Numéro de catalogue: 16105-1-AP	Numéro d'acquisition GenBank: BC016300	Méthode de purification: Purification par affinité contre l'antigène
Taille: 150ul , Concentration: 500 µg/ml by Nanodrop;	Identification du gène (NCBI): 6275	Dilutions recommandées: WB 1:5000-1:50000 IHC 1:50-1:500 IF 1:50-1:500
Hôte: Lapin	Nom complet: S100 calcium binding protein A4	
Isotype: IgG	MW calculé 101 aa, 12 kDa	
Immunogen Catalog Number: AG9019	MW observés: 10-12 kDa	

Applications

Applications testées:
FC, IF, IHC, WB, ELISA

Demandes citées:
IF, IHC, IP, WB

Spécificité de l'espèce:
Humain, souris

Espèces citées:
Humain, porc, rat, souris

Remarque-IHC: il est suggéré de démasquer l'antigène avec un tampon de TE buffer pH 9,0; (*) À défaut, le démasquage de l'antigène peut être effectué avec un tampon citrate pH 6,0.

Contrôles positifs:

WB : cellules A549, cellules HeLa, cellules NIH/3T3

IHC : tissu de cancer du sein humain, tissu de cancer du côlon humain, tissu de cancer du pancréas humain

IF : cellules HeLa,

Informations générales

S100A4 is a member of the S100 family of calcium-binding proteins. The S100 family members have been involved in the regulation of a number of cellular processes such as cell cycle progression and differentiation. S100A4 is known to localize to and function in the nucleus, cytoplasm of cells, and the extracellular space. S100A4 has also been shown to be associated with tumor growth, motility, invasion, metastasis, angiogenesis, apoptosis, and chemoresistance. It is a fibroblast-specific protein associated with mesenchymal cell morphology and motility, is expressed during epithelial-mesenchymal transformations (EMT) in vivo (PMID: 9362334). It is a specific prognostic marker for renal survival in patients with IgAN (PMID: 16105038). It is also an improved marker for lung fibroblasts that could be useful for investigating the pathogenesis of pulmonary fibrosis (PMID: 15618458). Overexpression of S100A4 is correlated with a worse prognosis in patients with various types of cancer.

Publications notables

Autrice	Pubmed ID	Journal	Application
Fei Yao	36163271	Inflamm Regen	WB,IF
Yixin Ren	30372905	Biomed Pharmacother	IHC
Kexin Ma	32961493	Ecotoxicol Environ Saf	WB

Stockage

Stockage:

Stocker à -20°C. Stable pendant un an après l'expédition.

Tampon de stockage:

PBS avec azoture de sodium à 0,02 % et glycérol à 50 % pH 7,3

L'aliquotage n'est pas nécessaire pour le stockage à -20C

*** Les 20ul contiennent 0,1% de BSA.

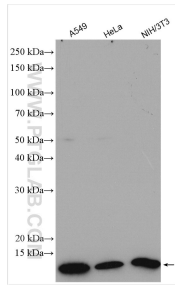
For technical support and original validation data for this product please contact:

T: 1 (888) 4PTGLAB (1-888-478-4522) (toll free in USA), or 1(312) 455-8498 (outside USA)

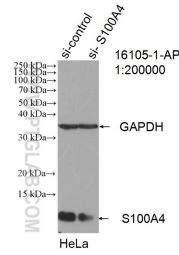
E: proteintech@ptglab.com
W: ptglab.com

This product is exclusively available under Proteintech Group brand and is not available to purchase from any other manufacturer.

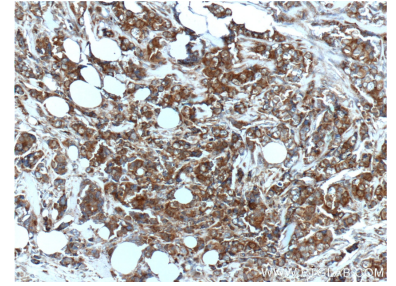
Données de validation sélectionnées



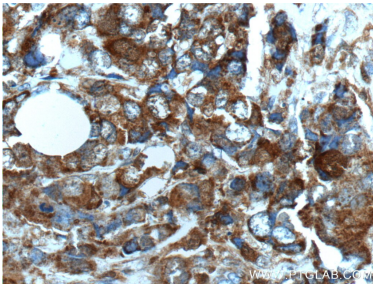
Various lysates were subjected to SDS PAGE followed by western blot with 16105-1-AP (S100A4 antibody) at dilution of 1:30000 incubated at room temperature for 1.5 hours.



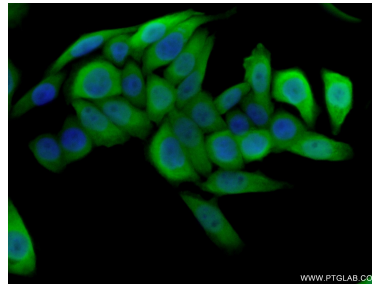
WB result of S100A4 antibody (16105-1-AP; 1:200000; incubated at room temperature for 1.5 hours) with sh-Control and sh-S100A4 transfected HeLa cells.



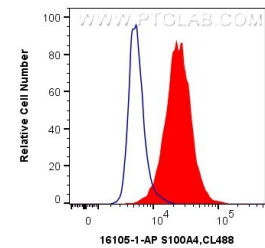
Immunohistochemical analysis of paraffin-embedded human breast cancer tissue slide using 16105-1-AP (S100A4 Antibody) at dilution of 1:200 (under 10x lens).



Immunohistochemical analysis of paraffin-embedded human breast cancer tissue slide using 16105-1-AP (S100A4 Antibody) at dilution of 1:200 (under 40x lens).



Immunofluorescent analysis of (10% Formaldehyde) fixed HeLa cells using 16105-1-AP (S100A4 antibody) at dilution of 1:50 and Alexa Fluor 488-conjugated AffiniPure Goat Anti-Rabbit IgG(H+L).



1×10^6 HeLa cells were intracellularly stained with 0.4 μ g Anti-Human S100A4 (16105-1-AP) and CoraLite[®]488-Conjugated AffiniPure Goat Anti-Rabbit IgG(H+L) at dilution 1:1000 (red), or 0.4 μ g Control Antibody. Cells were fixed with 4% PFA and permeabilized with Flow Cytometry Perm Buffer (PF00011-C).