

À des fins de recherche uniquement

Anticorps Polyclonal de lapin anti-PPP1R8



Numéro de catalogue: 16115-1-AP

Informations de base

Numéro de catalogue: 16115-1-AP	Numéro d'acquisition GenBank: BC013360	Méthode de purification: Purification par affinité contre l'antigène
Taille: 150ul, Concentration: 550 µg/ml by Nanodrop and 367 µg/ml by Bradford method using BSA as the standard;	Identification du gène (NCBI): 5511	Dilutions recommandées: WB 1:500-1:1000 IHC 1:20-1:200 IF 1:50-1:500
Hôte: Lapin	Nom complet: protein phosphatase 1, regulatory (inhibitor) subunit 8	
Isotype: IgG	MW calculé: 209 aa, 23 kDa	
Immunogen Catalog Number: AG9041	MW observés: 47 kDa, 28 kDa, 19 kDa	

Applications

Applications testées: IF, IHC, WB, ELISA	Contrôles positifs: WB : cellules PC-3, cellules HepG2
Spécificité de l'espèce: Humain, rat, souris	IHC : tissu rénal humain, tissu splénique humain, tissu testiculaire humain
Remarque-IHC: <i>il est suggéré de démasquer l'antigène avec un tampon de TE buffer pH 9.0; (*) À défaut, le démasquage de l'antigène peut être effectué avec un tampon citrate pH 6.0.</i>	IF : cellules HepG2,

Informations générales

PPP1R8, also named as ARD1, NIPP1, is a 351 amino acid protein, which has a basic N- and C-terminal and an acidic central domain. PPP1R8 is ubiquitously expressed, with highest levels in heart and skeletal muscle, followed by brain, placenta, lung, liver and pancreas. PPP1R8 has RNA-binding activity but does not cleave RNA and may target PP-1 to RNA-associated substrates and may also be involved in pre-mRNA splicing. PPP1R8 exists many isoforms and molecular weight of modified isoforms is about 18 kDa, 28 kDa and 47 kDa.

Stockage

Stockage:
Stocker à -20°C. Stable pendant un an après l'expédition.
Tampon de stockage:
PBS avec azoture de sodium à 0,02 % et glycérol à 50 % pH 7,3
L'aliquotage n'est pas nécessaire pour le stockage à -20C

*** Les 20ul contiennent 0,1% de BSA.

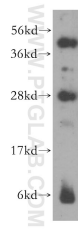
For technical support and original validation data for this product please contact:

T: 1 (888) 4PTGLAB (1-888-478-4522) (toll free in USA), or 1(312) 455-8498 (outside USA)

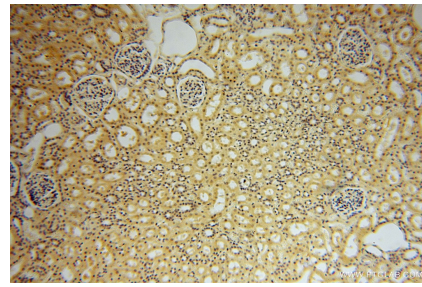
E: proteintech@ptglab.com
W: ptglab.com

This product is exclusively available under Proteintech Group brand and is not available to purchase from any other manufacturer.

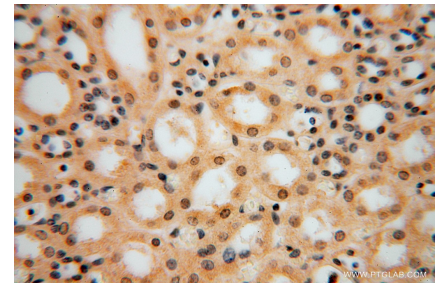
Données de validation sélectionnées



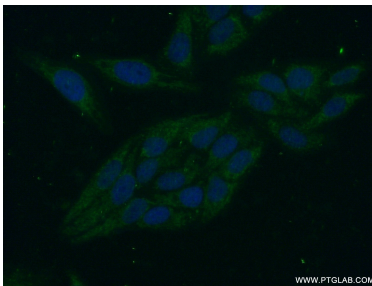
PC-3 cells were subjected to SDS PAGE followed by western blot with 16115-1-AP (PPP1R8 antibody) at dilution of 1:300 incubated at room temperature for 1.5 hours.



Immunohistochemical analysis of paraffin-embedded human kidney using 16115-1-AP (PPP1R8 antibody) at dilution of 1:50 (under 10x lens).



Immunohistochemical analysis of paraffin-embedded human kidney using 16115-1-AP (PPP1R8 antibody) at dilution of 1:50 (under 40x lens).



Immunofluorescent analysis of (-20°C Ethanol) fixed HepG2 cells using 16115-1-AP (PPP1R8 antibody) at dilution of 1:50 and Alexa Fluor 488-conjugated AffiniPure Goat Anti-Rabbit IgG(H+L).