

À des fins de recherche uniquement

# Anticorps Polyclonal de lapin anti-RAC1/2/3



Numéro de catalogue: 16117-1-AP

Phare

8 Publications

## Informations de base

Numéro de catalogue:  
16117-1-AP

Taille:  
150ul, Concentration: 500 µg/ml by Nanodrop and 300 µg/ml by Bradford method using BSA as the standard;

Hôte:  
Lapin

Isotype:  
IgG

Immunogen Catalog Number:  
AG9045

Numéro d'acquisition GenBank:  
BC015197

Identification du gène (NCBI):  
5881

Nom complet:  
ras-related C3 botulinum toxin substrate 3 (rho family, small GTP binding protein Rac3)

MW calculé  
192 aa, 21 kDa

MW observés:  
21 kDa

Méthode de purification:  
Purification par affinité contre l'antigène

Dilutions recommandées:  
WB 1:2000-1:10000  
IP 0.5-4.0 ug for IP and 1:500-1:1000 for WB

## Applications

Applications testées:  
IP, WB, ELISA

Demandes citées:  
WB

Spécificité de l'espèce:  
Humain, rat, souris

Espèces citées:  
Humain, souris

Contrôles positifs:

WB : cellules SH-SY5Y, tissu cérébral de rat, tissu cérébral de souris, tissu cérébral humain

IP : tissu cérébral de souris,

## Informations générales

Rac3 is a GTPase that belongs to the RAS superfamily of small GTP-binding proteins. Members of this superfamily appear to regulate a diverse array of cellular events, including the control of cell growth, cytoskeletal reorganization, and the activation of protein kinases. There are three Rac genes in mammals, which share over 90% protein identity but differ for their pattern of expression. Rac1 is ubiquitous, Rac2 is specific for hematopoietic cells, while Rac3 is prevalent in the developing nervous system. This antibody can recognize Rac1, Rac2, and Rac3.

## Publications notables

Autrice	Pubmed ID	Journal	Application
Brian J Rosenberg	28356423	Mol Biol Cell	WB
Erika Di Biase	32198666	Glycoconj J	WB
Sira A Franchi	29358905	Front Cell Neurosci	WB

## Stockage

Stockage:

Stocker à -20°C. Stable pendant un an après l'expédition.

Tampon de stockage:

PBS avec azoture de sodium à 0,02 % et glycérol à 50 % pH 7,3

L'aliquotage n'est pas nécessaire pour le stockage à -20C

\*\*\* Les 20ul contiennent 0,1% de BSA.

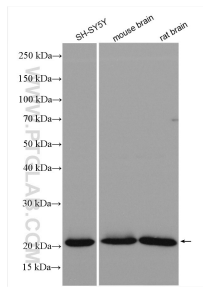
For technical support and original validation data for this product please contact:

T: 1 (888) 4PTGLAB (1-888-478-4522) (toll free in USA), or 1(312) 455-8498 (outside USA)

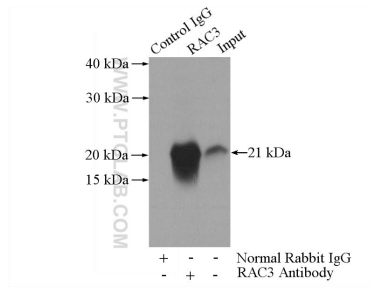
E: [proteintech@ptglab.com](mailto:proteintech@ptglab.com)  
W: [ptglab.com](http://ptglab.com)

This product is exclusively available under Proteintech Group brand and is not available to purchase from any other manufacturer.

## Données de validation sélectionnées



Various lysates were subjected to SDS PAGE followed by western blot with 16117-1-AP (RAC1/2/3 antibody) at dilution of 1:5000 incubated at room temperature for 1.5 hours.



IP Result of anti-RAC1/2/3 (IP:16117-1-AP, 3ug; Detection:16117-1-AP 1:500) with mouse brain tissue lysate 2640ug.