

À des fins de recherche uniquement

Anticorps Polyclonal de lapin anti-RLIM



Numéro de catalogue: 16121-1-AP

Phare

5 Publications

Informations de base

Numéro de catalogue:
16121-1-AP

Taille:
150ul, Concentration: 600 µg/ml by Nanodrop and 293 µg/ml by Bradford method using BSA as the standard;

Hôte:
Lapin

Isotype:
IgG

Immunogen Catalog Number:
AG9077

Numéro d'acquisition GenBank:
BC013357

Identification du gène (NCBI):
51132
Nom complet:
ring finger protein, LIM domain interacting

MW calculé:
624 aa, 69 kDa

MW observés:
75 kDa

Méthode de purification:
Purification par affinité contre l'antigène

Dilutions recommandées:
WB 1:500-1:2000
IP 0.5-4.0 ug for IP and 1:500-1:1000 for WB

Applications

Applications testées:
IP, WB, ELISA

Demandes citées:
CoIP, IF, IHC, IP, WB

Spécificité de l'espèce:
Humain, rat, souris

Espèces citées:
Humain, souris

Contrôles positifs:

WB : cellules HeLa, cellules Jurkat

IP : cellules HeLa,

Informations générales

RLIM (RING finger LIM domain-binding protein), also known as RNF12 (RING finger protein 12) or NY-REN-43, is a 624 amino acid RING-H2 zinc finger protein that is involved in protein ubiquitinylation and subsequent degradation. Expressed in a variety of tissues, RLIM binds to the LIM domain of various proteins and functions as a protein ligase that negatively co-regulates LIM homeodomain (LIM-HD) transcription factors. Through its interaction with Sin3A, a component of the histone deacetylase corepressor complex, RLIM is able to recruit the corepressor complex to LIM-HD proteins, thereby inhibiting LIM-HD transcription. In addition to recruiting the deacetylase complex to LIM-HD proteins, RLIM is able to bind to, ubiquitinate and subsequently degrade CLIM proteins, which function as positive co-regulators of LIM-HD transcription factors. RLIM contains one RING-type zinc finger and is implicated in renal cell carcinoma. The calculated molecular weight of RLIM is 69 kDa, but modified RLIM is about 70-75 kDa.

Publications notables

Autrice	Pubmed ID	Journal	Application
Chao Li	26317901	Oncotarget	WB
Yongsheng Huang	29137325	Oncotarget	WB
Tomasz Chelmicki	24842875	Elife	WB

Stockage

Stockage:

Stocker à -20°C. Stable pendant un an après l'expédition.

Tampon de stockage:

PBS avec azoture de sodium à 0,02 % et glycérol à 50 % pH 7,3

L'aliquotage n'est pas nécessaire pour le stockage à -20C

*** Les 20ul contiennent 0,1% de BSA.

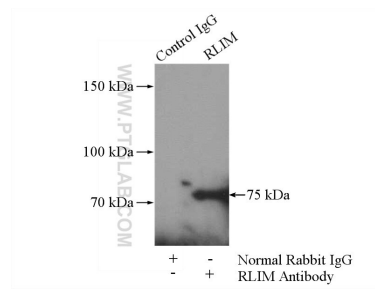
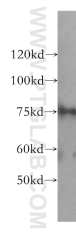
For technical support and original validation data for this product please contact:

T: 1 (888) 4PTGLAB (1-888-478-4522) (toll free in USA), or 1(312) 455-8498 (outside USA)

E: proteintech@ptglab.com
W: ptglab.com

This product is exclusively available under Proteintech Group brand and is not available to purchase from any other manufacturer.

Données de validation sélectionnées



HeLa cells were subjected to SDS PAGE followed by western blot with 16121-1-AP (RLIM antibody) at dilution of 1:500 incubated at room temperature for 1.5 hours.

IP Result of anti-RLIM (IP:16121-1-AP, 4ug; Detection:16121-1-AP 1:500) with HeLa cells lysate 1520ug.