

À des fins de recherche uniquement

Anticorps Polyclonal de lapin anti-ARHGDI2



Numéro de catalogue: 16122-1-AP

Phare

6 Publications

Informations de base

Numéro de catalogue:
16122-1-AP

Taille:
150ul, Concentration: 1000 µg/ml by
Nanodrop and 533 µg/ml by Bradford
method using BSA as the standard;

Hôte:
Lapin

Isotype:
IgG

Immunogen Catalog Number:
AG9078

Numéro d'acquisition GenBank:
BC009200

Identification du gène (NCBI):

Nom complet:
Rho GDP dissociation inhibitor (GDI)
beta

MW calculé
201 aa, 23 kDa

MW observés:
27 kDa

Méthode de purification:
Purification par affinité contre
l'antigène

Dilutions recommandées:
WB 1:5000-1:50000
IP 0.5-4.0 ug for IP and 1:500-1:2000
for WB
IHC 1:20-1:200

Applications

Applications testées:
IHC, IP, WB, ELISA

Demandes citées:
IHC, WB

Spécificité de l'espèce:
Humain, rat, souris

Espèces citées:
Humain

**Remarque-IHC: il est suggéré de démasquer
l'antigène avec un tampon de TE buffer pH
9.0; (*) A défaut, 'le démasquage de
l'antigène peut être 'effectué avec un
tampon citrate pH 6,0.**

Contrôles positifs:

WB : cellules HL-60, cellules Jurkat, cellules K-562,
cellules Raji, tissu splénique de rat

IP : cellules Raji,

IHC : tissu de cancer de l'estomac humain,

Informations générales

ARHGDI2, also known as RhoGDI2, is a conserved member of the RhoGDI family and plays an important role in cell migrations. It regulates the GDP/GTP exchange reaction of the Rho proteins by inhibiting the dissociation of GDP from them, and the subsequent binding of GTP to them. It is mainly in hematopoietic, endothelial, and epithelial cells. It has been linked to tumorigenesis and metastasis. RhoGDI2 expression is downregulated in several cancer types, such as bladder, lung and lymphoma, but is upregulated in prostate and gastric cancer.

Publications notables

Autrice	Pubmed ID	Journal	Application
Yang Fang	25180836	DNA Cell Biol	WB
Fan Zhang	25411139	Proteomics	WB
Lei Liu	34006303	Mol Cancer	WB

Stockage

Stockage:

Stocker à -20°C. Stable pendant un an après l'expédition.

Tampon de stockage:

PBS avec azoture de sodium à 0,02 % et glycérol à 50 % pH 7,3

L'aliquotage n'est pas nécessaire pour le stockage à -20C

*** Les 20ul contiennent 0,1% de BSA.

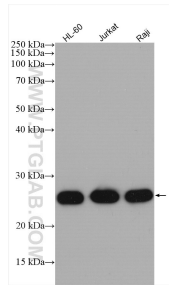
For technical support and original validation data for this product please contact:

T: 1 (888) 4PTGLAB (1-888-478-4522) (toll free
in USA), or 1(312) 455-8498 (outside USA)

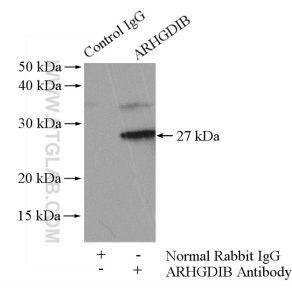
E: proteintech@ptglab.com
W: ptglab.com

This product is exclusively available under Proteintech Group brand and is not available to purchase from any other manufacturer.

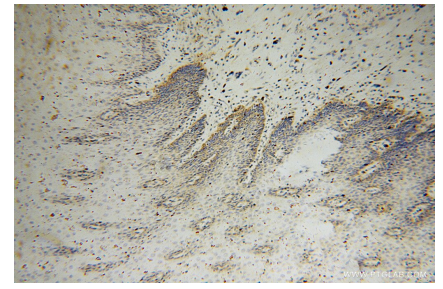
Données de validation sélectionnées



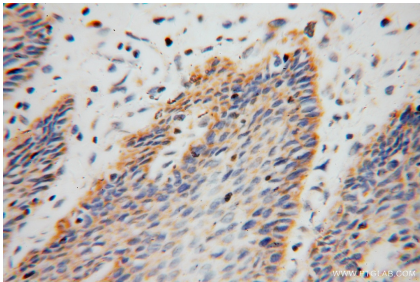
Various lysates were subjected to SDS PAGE followed by western blot with 16122-1-AP (ARHGDI B antibody) at dilution of 1:40000 incubated at room temperature for 1.5 hours.



IP Result of anti-ARHGDI B (IP:16122-1-AP, 4ug; Detection:16122-1-AP 1:1000) with Raji cells lysate 2000ug.



Immunohistochemical analysis of paraffin-embedded human stomach cancer using 16122-1-AP (ARHGDI B antibody) at dilution of 1:100 (under 10x lens).



Immunohistochemical analysis of paraffin-embedded human stomach cancer using 16122-1-AP (ARHGDI B antibody) at dilution of 1:100 (under 40x lens).