

À des fins de recherche uniquement

Anticorps Polyclonal de lapin anti-CLMP



Numéro de catalogue: 16127-1-AP

1 Publications

Informations de base

| | | |
|--|--|---|
| Numéro de catalogue: 16127-1-AP | Numéro d'acquisition GenBank: BC009371 | Méthode de purification: Purification par affinité contre l'antigène |
| Taille: 150ul , Concentration: 450 µg/ml by Nanodrop; | Identification du gène (NCBI): 79827 | Dilutions recommandées: WB 1:1000-1:4000 IHC 1:250-1:1000 |
| Hôte: Lapin | Nom complet: adipocyte-specific adhesion molecule | |
| Isotype: IgG | MW calculé 373 aa, 41 kDa | |
| Immunogen Catalog Number: AG9111 | MW observés: 45-50 kDa | |

Applications

Applications testées:

IHC, WB, ELISA

Demandes citées:

WB

Spécificité de l'espèce:

Humain, rat, souris

Espèces citées:

Humain

Contrôles positifs:

WB : tissu cérébral de souris, cellules 3T3-L1, tissu cérébral de rat

IHC : tissu adipeux brun de souris,

Remarque-IHC: il est suggéré de démasquer l'antigène avec un tampon de TE buffer pH 9,0; (*) À défaut, 'le démasquage de l'antigène peut être 'effectué avec un tampon citrate pH 6,0.

Informations générales

CLMP (Coxsackie- and adenovirus receptor-like membrane protein), also known as ACAM (adipocyte adhesion molecule) or ASAM, is a member of the CTX (cortical thymocyte marker in Xenopus) family of proteins. CTX family proteins are type I transmembrane proteins within the Ig superfamily that localize to junctional complexes between endothelial and epithelial cells and may play a role in cell-cell adhesion. CLMP is predominantly expressed in epithelial cells within different tissues and in the white adipose tissue. It may be involved in the cell-cell adhesion and may play a role in adipocyte differentiation and development of obesity.

Publications notables

| Autrice | Pubmed ID | Journal | Application |
|-----------------|-----------|----------------|-------------|
| Hiroki Takeuchi | 34448537 | Cell Microbiol | WB |

Stockage

Stockage:

Stocker à -20°C. Stable pendant un an après l'expédition.

Tampon de stockage:

PBS avec azoture de sodium à 0,02 % et glycérol à 50 % pH 7,3

L'aliquotage n'est pas nécessaire pour le stockage à -20C

*** Les 20ul contiennent 0,1% de BSA.

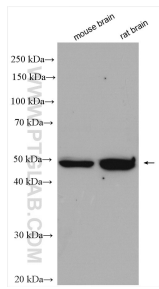
For technical support and original validation data for this product please contact:

T: 1 (888) 4PTGLAB (1-888-478-4522) (toll free in USA), or 1(312) 455-8498 (outside USA)

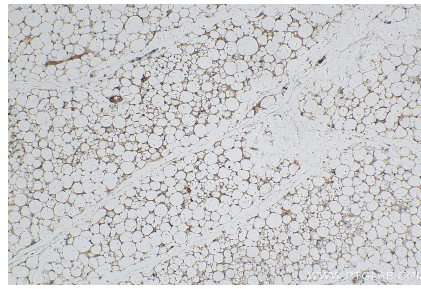
E: proteintech@ptglab.com
W: ptglab.com

This product is exclusively available under Proteintech Group brand and is not available to purchase from any other manufacturer.

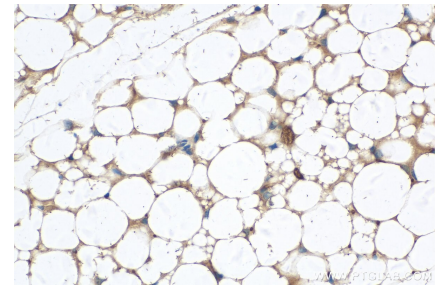
Données de validation sélectionnées



Various lysates were subjected to SDS PAGE followed by western blot with 16127-1-AP (CLMP antibody) at dilution of 1:2000 incubated at room temperature for 1.5 hours.



Immunohistochemical analysis of paraffin-embedded mouse brown adipose tissue slide using 16127-1-AP (CLMP antibody) at dilution of 1:500 (under 10x lens). Heat mediated antigen retrieval with Tris-EDTA buffer (pH 9.0).



Immunohistochemical analysis of paraffin-embedded mouse brown adipose tissue slide using 16127-1-AP (CLMP antibody) at dilution of 1:500 (under 40x lens). Heat mediated antigen retrieval with Tris-EDTA buffer (pH 9.0).