

À des fins de recherche uniquement

# Anticorps Polyclonal de lapin anti-Citrate synthase



Numéro de catalogue: 16131-1-AP

Phare

68 Publications

## Informations de base

Numéro de catalogue:  
16131-1-AP

Taille:  
150ul, Concentration: 350 µg/ml by Nanodrop and 313 µg/ml by Bradford method using BSA as the standard;

Hôte:  
Lapin

Isotype:  
IgG

Immunogen Catalog Number:  
AG9117

Numéro d'acquisition GenBank:  
BC010106

Identification du gène (NCBI):  
1431

Nom complet:  
citrate synthase

MW calculé  
466 aa, 52 kDa

MW observés:  
45-50 kDa

Méthode de purification:  
Purification par affinité contre l'antigène

Dilutions recommandées:  
WB 1:1000-1:8000  
IP 0.5-4.0 ug for IP and 1:500-1:2000 for WB  
IHC 1:100-1:400  
IF 1:50-1:500

## Applications

Applications testées:  
IF, IHC, IP, WB, ELISA

Demandes citées:  
CoIP, IF, IHC, IP, WB

Spécificité de l'espèce:  
Humain, rat, souris

Espèces citées:  
Humain, Lapin, poulet, rat, souris, Hamster

**Remarque-IHC: il est suggéré de démasquer l'antigène avec un tampon de TE buffer pH 9,0; (\*) A défaut, 'le démasquage de l'antigène peut être effectué avec un tampon citrate pH 6,0.**

Contrôles positifs:

WB : tissu cardiaque de souris, cellules HeLa

IP : tissu cardiaque de souris,

IHC : tissu de cancer du foie humain,

IF : cellules HepG2,

## Informations générales

Citrate synthase (CS), the first and rate-limiting enzyme of the tricarboxylic acid cycle, plays a key role in regulating energy generation of mitochondrial respiration (PMID:19479947). It belongs to the citrate synthase family. The deduced 466-amino acid protein contains an N-terminal mitochondrial targeting sequence and a motif highly conserved in citrate synthases (PMID:12549038). It can exist as a dimer (PMID:8749851). Northern blot analysis detected no CS expression in thymus and small intestine (PMID:12549038). This antibody is specific to CS.

## Publications notables

Autrice	Pubmed ID	Journal	Application
Avinash Kumar	31574345	Free Radic Biol Med	WB
Wenliang Zhang	34580406	Sci Rep	WB
Teresa W-M Fan	36150727	J Immunol	

## Stockage

Stockage:

Stocker à -20°C. Stable pendant un an après l'expédition.

Tampon de stockage:

PBS avec azoture de sodium à 0,02 % et glycérol à 50 % pH 7,3

L'aliquotage n'est pas nécessaire pour le stockage à -20C

\*\*\* Les 20ul contiennent 0,1% de BSA.

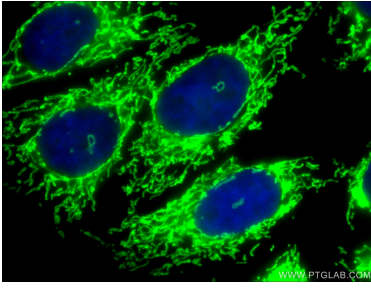
For technical support and original validation data for this product please contact:

T: 1 (888) 4PTGLAB (1-888-478-4522) (toll free in USA), or 1(312) 455-8498 (outside USA)

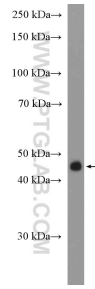
E: proteintech@ptglab.com  
W: ptglab.com

This product is exclusively available under Proteintech Group brand and is not available to purchase from any other manufacturer.

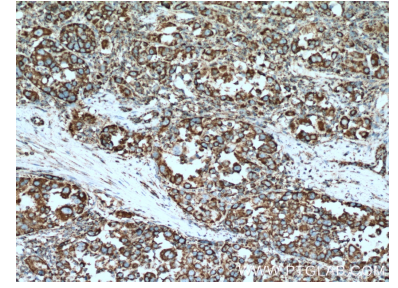
## Données de validation sélectionnées



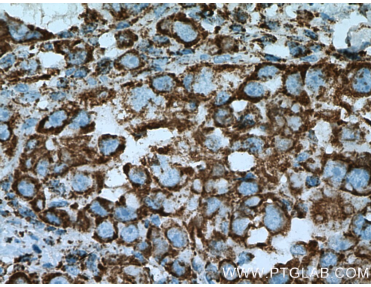
Immunofluorescent analysis of (10% Formaldehyde) fixed HepG2 cells using 16131-1-AP (Citrate synthase antibody) at dilution of 1:50 and Alexa Fluor 488-conjugated AffiniPure Goat Anti-Rabbit IgG(H+L).



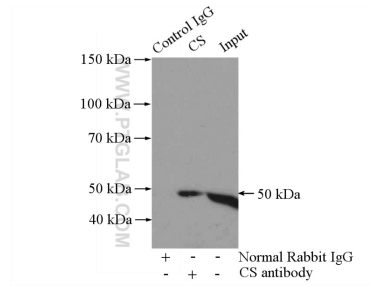
mouse heart tissue were subjected to SDS PAGE followed by western blot with 16131-1-AP (Citrate synthase antibody at dilution of 1:4000 incubated at room temperature for 1.5 hours.



Immunohistochemical analysis of paraffin-embedded human liver cancer tissue slide using 16131-1-AP (Citrate synthase antibody at dilution of 1:200 (under 10x lens). Heat mediated antigen retrieval with Tris-EDTA buffer (pH 9.0).



Immunohistochemical analysis of paraffin-embedded human liver cancer tissue slide using 16131-1-AP (Citrate synthase antibody at dilution of 1:200 (under 40x lens). Heat mediated antigen retrieval with Tris-EDTA buffer (pH 9.0).



IP Result of anti-Citrate synthase (IP:16131-1-AP, 4ug; Detection:16131-1-AP 1:1000) with mouse heart tissue lysate 3200ug.