

À des fins de recherche uniquement

Anticorps Polyclonal de lapin anti-BAG1L-specific



Numéro de catalogue: 16148-1-AP

1 Publications

Informations de base

Numéro de catalogue:
16148-1-AP

Taille:
150ul , Concentration: 300 µg/ml by
Nanodrop and 260 µg/ml by Bradford
method using BSA as the standard;

Hôte:
Lapin

Isotype:
IgG

Numéro d'acquisition GenBank:
NM_004323

Identification du gène (NCBI):
573
Nom complet:
BCL2-associated athanogene

MW calculé
39 kDa

Méthode de purification:
Purification par affinité contre
l'antigène

Dilutions recommandées:
IF 1:10-1:100

Applications

Applications testées:
IF, ELISA

Spécificité de l'espèce:
Humain

Contrôles positifs:

IF : cellules HepG2,

Informations générales

BAG1 have been identified that modulate gene transcription through poorly defined mechanisms. Four isoforms of the BAG1 protein (BAG1S, BAG1, BAG1M and BAG1L) can be produced from a common mRNA by use of alternative translation initiation sites, including a non-canonical CTG codon in one instance. The longest, BAG1L (Mr ~50K), contains a nuclear localization signal (NLS) and resides in the nucleus, whereas BAG1M (Mr ~46K) has an incomplete NLS and distributes mainly in cytosol, unless dragged into the nucleus through interactions with other. Distribution of BAG1S(p33) is not clear yet. This antibody can recognize BAG1L and BAG1V.

Publications notables

Autrice	Pubmed ID	Journal	Application
Nada Lallous	27765852	Mol. Cancer Ther	

Stockage

Stockage:

Stocker à -20°C. Stable pendant un an après l'expédition.

Tampon de stockage:

PBS avec azoture de sodium à 0,02 % et glycérol à 50 % pH 7,3

L'aliquotage n'est pas nécessaire pour le stockage à -20C

*** Les 20ul contiennent 0,1% de BSA.

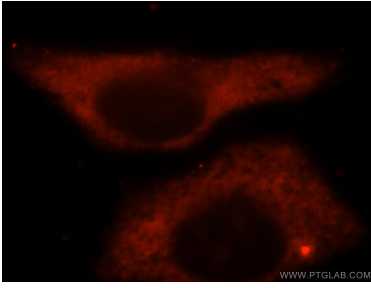
For technical support and original validation data for this product please contact:

T: 1 (888) 4PTGLAB (1-888-478-4522) (toll free
in USA), or 1(312) 455-8498 (outside USA)

E: proteintech@ptglab.com
W: ptglab.com

This product is exclusively available under Proteintech Group brand and is not available to purchase from any other manufacturer.

Données de validation sélectionnées



Immunofluorescent analysis of HepG2 cells, using BAG1 antibody 16148-1-AP at 1:25 dilution and Rhodamine-labeled goat anti-rabbit IgG (red).