

À des fins de recherche uniquement

Anticorps Polyclonal de lapin anti-CCR2a-specific



Numéro de catalogue: 16153-1-AP

13 Publications

Informations de base

Numéro de catalogue: 16153-1-AP	Numéro d'acquisition GenBank: NM_000647	Méthode de purification: Purification par affinité contre l'antigène
Taille: 150ul, Concentration: 600 µg/ml by Nanodrop and 373 µg/ml by Bradford method using BSA as the standard;	Identification du gène (NCBI): 729230	Dilutions recommandées: WB 1:1000-1:4000 IHC 1:20-1:200
Hôte: Lapin	Nom complet: chemokine (C-C motif) receptor 2	
Isotype: IgG	MW calculé: 42 kDa	
	MW observés: 35 kDa	

Applications

Applications testées:

FC, IHC, WB, ELISA

Demandes citées:

IF, IHC, WB

Spécificité de l'espèce:

Humain

Espèces citées:

Humain, rat, souris

Remarque-IHC: il est suggéré de démasquer l'antigène avec un tampon de TE buffer pH 9,0; (*) À défaut, le démasquage de l'antigène peut être effectué avec un tampon citrate pH 6,0.

Contrôles positifs:

WB : cellules Jurkat, tissu de muscle squelettique de rat, tissu de muscle squelettique de souris

IHC : tissu rénal humain, tissu de tumeur ovarienne humaine

Informations générales

CCR2 encodes a receptor for MCP1, functioning in inflammatory processes, tumor infiltration and monocyte invasion of artery walls in atherosclerosis. There are two isoforms of CCR2, CCR2A and CCR2B. CCR2 isoforms are expressed by different cell subsets in both normal and IIM muscle. CCR2A was expressed in vessel walls and by some mononuclear cells, especially in cells involved in partial invasion in PM and IBM. CCR2B expression was observed in all satellite cells, in the muscular domain of neuromuscular junctions and in some regenerative fibers of IIM, but not in inflammatory exudates. The sequences of the two isoforms are different from 314-374 aa. This antibody 16153-1-AP is raised against the peptide of 344-358 amino acids of CCR2a. It is specific to CCR2a.

Publications notables

Autrice	Pubmed ID	Journal	Application
Hiroaki Yasui	31541326	Clin Exp Metastasis	IHC
Tian Xu	34699947	J Ethnopharmacol	WB
Shin Ung Kang	34775491	Lab Invest	WB

Stockage

Stockage:

Stocker à -20°C. Stable pendant un an après l'expédition.

Tampon de stockage:

PBS avec azoture de sodium à 0,02 % et glycérol à 50 % pH 7,3

L'aliquotage n'est pas nécessaire pour le stockage à -20C

***** Les 20ul contiennent 0,1% de BSA.**

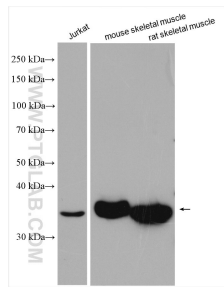
For technical support and original validation data for this product please contact:

T: 1 (888) 4PTGLAB (1-888-478-4522) (toll free in USA), or 1(312) 455-8498 (outside USA)

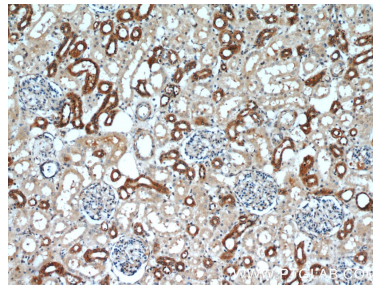
E: proteintech@ptglab.com
W: ptglab.com

This product is exclusively available under Proteintech Group brand and is not available to purchase from any other manufacturer.

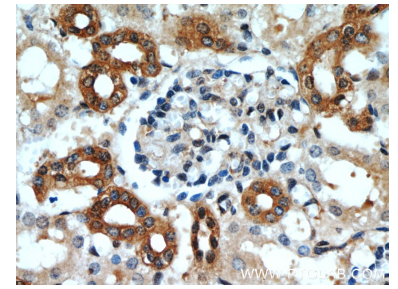
Données de validation sélectionnées



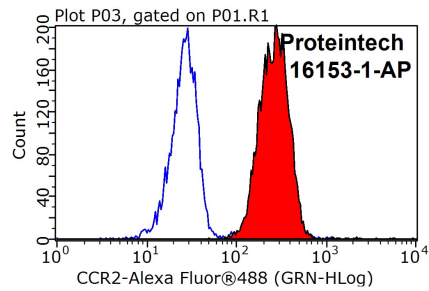
Various lysates were subjected to SDS PAGE followed by western blot with 16153-1-AP (CCR2a-specific antibody) at dilution of 1:2000 incubated at room temperature for 1.5 hours.



Immunohistochemical analysis of paraffin-embedded human kidney slide using 16153-1-AP (CCR2-specific antibody at dilution of 1:50.



Immunohistochemical analysis of paraffin-embedded human kidney slide using 16153-1-AP (CCR2-specific antibody at dilution of 1:50.



1X10⁶ Jurkat cells were stained with 0.2ug CCR2-specific antibody (16153-1-AP, red) and control antibody (blue). Fixed with 90% MeOH blocked with 3% BSA (30 min). Alexa Fluor 488-conjugated AffiniPure Goat Anti-Rabbit IgG(H+L) with dilution 1:1000.