

À des fins de recherche uniquement

Anticorps Polyclonal de lapin anti-KRAS-2B-specific



Numéro de catalogue: 16155-1-AP

Phare

5 Publications

Informations de base

Numéro de catalogue:

16155-1-AP

Taille:

150ul, Concentration: 850 µg/ml by Nanodrop and 593 µg/ml by Bradford method using BSA as the standard;

Hôte:

Lapin

Isotype:

IgG

Numéro d'acquisition GenBank:

NM_004985

Identification du gène (NCBI):

3845

Nom complet:

v-Ki-ras2 Kirsten rat sarcoma viral oncogene homolog

MW calculé

21 kDa

MW observés:

21 kDa

Méthode de purification:

Purification par affinité contre l'antigène

Dilutions recommandées:

WB 1:500-1:2000

IHC 1:50-1:500

IF 1:50-1:500

Applications

Applications testées:

IF, IHC, WB, ELISA

Demandes citées:

FC, WB

Spécificité de l'espèce:

Humain, souris

Espèces citées:

Humain

Contrôles positifs:

WB : cellules HeLa, cellules HEK-293, cellules MCF-7, Protéine recombinante, tissu cérébral de souris, tissu rénal de souris

IHC : tissu de cancer du côlon humain,

IF : cellules HeLa,

Remarque-IHC: il est suggéré de démasquer l'antigène avec un tampon de TE buffer pH 9,0; (*) À défaut, le démasquage de l'antigène peut être effectué avec un tampon citrate pH 6,0.

Informations générales

RAS gene family encodes very similar 21KD proteins and are homologs of rodent sarcoma virus genes that have transforming abilities. KRAS has two isoforms, 2A and 2B. This antibody is specific for KRAS-2B.

Publications notables

Autrice	Pubmed ID	Journal	Application
Andrew M Waters	28951536	Sci Signal	WB
Mahmoud Labib	32719513	Nat Biomed Eng	FC
Sascha Röth	32668202	Cell Chem Biol	WB

Stockage

Stockage:

Stocker à -20°C. Stable pendant un an après l'expédition.

Tampon de stockage:

PBS avec azoture de sodium à 0,02 % et glycérol à 50 % pH 7,3

L'aliquotage n'est pas nécessaire pour le stockage à -20C

*** Les 20ul contiennent 0,1% de BSA.

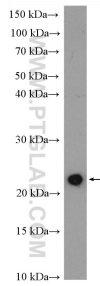
For technical support and original validation data for this product please contact:

T: 1 (888) 4PTGLAB (1-888-478-4522) (toll free in USA), or 1(312) 455-8498 (outside USA)

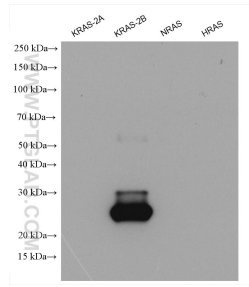
E: proteintech@ptglab.com
W: ptglab.com

This product is exclusively available under Proteintech Group brand and is not available to purchase from any other manufacturer.

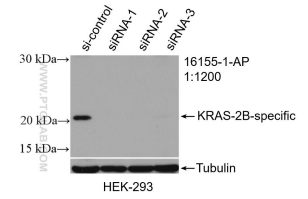
Données de validation sélectionnées



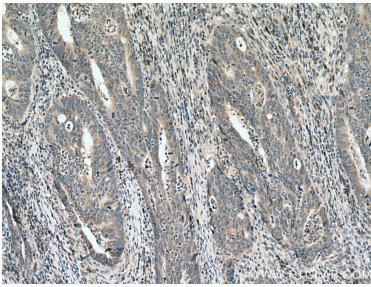
HeLa cells were subjected to SDS PAGE followed by western blot with 16155-1-AP (KRAS-2B-specific antibody) at dilution of 1:1000 incubated at room temperature for 1.5 hours.



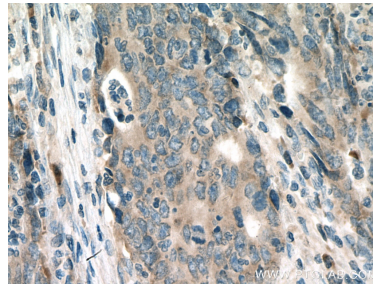
Recombinant proteins (ag27444 (6³⁵His tag-KRAS-2A), ag21645 (6³⁵His tag-KRAS-2B), ag29746 (6³⁵His tag-NRAS), ag23265 (GST-HRAS)) were subjected to SDS PAGE followed by western blot with 16155-1-AP (KRAS-2B-specific antibody) at dilution of 1:2000 incubated at room temperature for 1.5 hours.



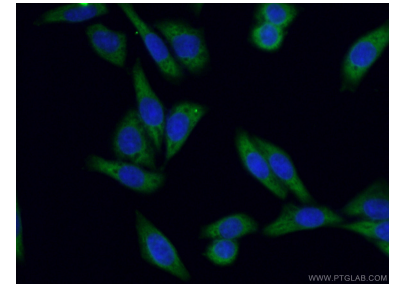
HEK-293 cells were subjected to SDS PAGE followed by western blot with 16155-1-AP (KRAS-2B-specific antibody) at dilution of 1:1200 incubated at room temperature for 1.5 hours.



Immunohistochemical analysis of paraffin-embedded human colon cancer tissue slide using 16155-1-AP (KRAS-2B-specific antibody) at dilution of 1:200 (under 10x lens). Heat mediated antigen retrieval with Tris-EDTA buffer (pH 9.0).



Immunohistochemical analysis of paraffin-embedded human colon cancer tissue slide using 16155-1-AP (KRAS-2B-specific antibody) at dilution of 1:200 (under 40x lens). Heat mediated antigen retrieval with Tris-EDTA buffer (pH 9.0).



Immunofluorescent analysis of (-20°C Ethanol) fixed HeLa cells using 16155-1-AP (KRAS-2B-specific antibody) at dilution of 1:50 and Alexa Fluor 488-Conjugated AffiniPure Goat Anti-Rabbit IgG(H+L).