

À des fins de recherche uniquement

# Anticorps Polyclonal de lapin anti-KRAS-2A-specific



Numéro de catalogue: 16156-1-AP

2 Publications

## Informations de base

Numéro de catalogue:  
16156-1-AP

Taille:  
150ul , Concentration: 1400 µg/ml by  
Nanodrop and 693 µg/ml by Bradford  
method using BSA as the standard;

Hôte:  
Lapin

Isotype:  
IgG

Numéro d'acquisition GenBank:  
NM\_033360

Identification du gène (NCBI):

Nom complet:  
v-Ki-ras2 Kirsten rat sarcoma viral  
oncogene homolog

MW calculé

21 kDa

MW observés:

21-24 kDa

Méthode de purification:  
Purification par affinité contre  
l'antigène

Dilutions recommandées:

WB 1:500-1:1000

IF 1:50-1:500

## Applications

Applications testées:  
FC, IF, WB, ELISA

Demandes citées:  
WB

Spécificité de l'espèce:  
Humain

Espèces citées:  
Humain

Contrôles positifs:

WB : cellules NIH/3T3,

IF : cellules SH-SY5Y,

## Informations générales

RAS (derived from 'Rat Sarcoma' virus) gene family includes KRAS, HRAS, and NRAS. These genes encode very similar 21 kDa proteins and are homologs of rodent sarcoma virus genes that have transforming abilities. KRAS has two isoforms, 2A and 2B. This antibody is specific for KRAS-2A, which also named as KRAS-4A .

## Publications notables

Autrice	Pubmed ID	Journal	Application
Andrew M Waters	28951536	Sci Signal	WB
Sascha Röth	32668202	Cell Chem Biol	WB

## Stockage

Stockage:

Stocker à -20°C. Stable pendant un an après l'expédition.

Tampon de stockage:

PBS avec azotate de sodium à 0,02 % et glycérol à 50 % pH 7,3

L'aliquotage n'est pas nécessaire pour le stockage à -20C

\*\*\* Les 20ul contiennent 0,1% de BSA.

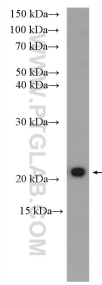
For technical support and original validation data for this product please contact:

T: 1 (888) 4PTGLAB (1-888-478-4522) (toll free  
in USA), or 1(312) 455-8498 (outside USA)

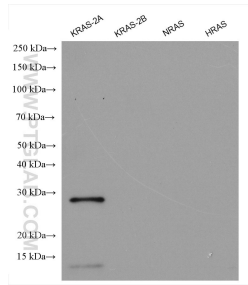
E: proteintech@ptglab.com  
W: ptglab.com

This product is exclusively available under Proteintech Group brand and is not available to purchase from any other manufacturer.

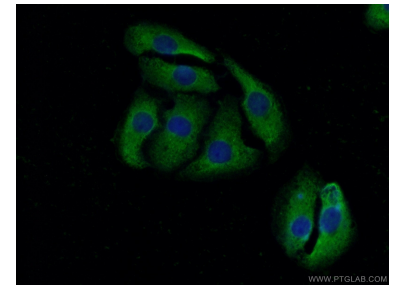
## Données de validation sélectionnées



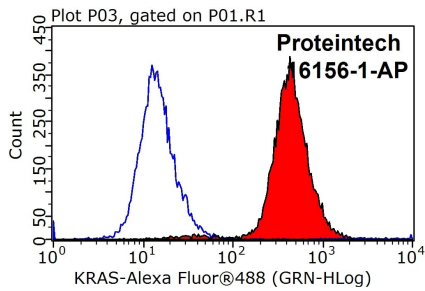
NIH/3T3 cells were subjected to SDS PAGE followed by western blot with 16156-1-AP (KRAS-2A-specific antibody) at dilution of 1:600 incubated at room temperature for 1.5 hours.



Recombinant proteins (ag27444 (6\*His tag-KRAS-2A), ag21645(6\*His tag-KRAS-2B), ag29746(6\*His tag-NRAS), ag23265(GST-HRAS)) were subjected to SDS PAGE followed by western blot with 16155-1-AP (KRAS-2B-specific antibody) at dilution of 1:2000 incubated at room temperature for 1.5 hours.



Immunofluorescent analysis of (-20°C Acetone) fixed SH-SY5Y cells using 16156-1-AP (KRAS-2A-specific antibody) at dilution of 1:50 and Alexa Fluor 488-conjugated AffiniPure Goat Anti-Rabbit IgG(H+L).



1X10<sup>6</sup> HeLa cells were stained with 0.2ug KRAS-2A-specific antibody (16156-1-AP, red) and control antibody (blue). Fixed with 90% MeOH blocked with 3% BSA (30 min). Alexa Fluor 488-conjugated AffiniPure Goat Anti-Rabbit IgG(H+L) with dilution 1:1000.