

À des fins de recherche uniquement

Anticorps Polyclonal de lapin anti-Presenilin-1-Specific



Numéro de catalogue: 16163-1-AP

Phare

14 Publications

Informations de base

Numéro de catalogue:
16163-1-AP

Taille:
150ul, Concentration: 500 µg/ml by
Nanodrop;

Hôte:
Lapin

Isotype:
IgG

Numéro d'acquisition GenBank:
NM_000021

Identification du gène (NCBI):
5663

Nom complet:
presenilin 1

MW calculé
53 kDa

MW observés:
21kDa

Méthode de purification:
Purification par affinité contre
l'antigène

Dilutions recommandées:
WB 1:1000-1:8000
IP 0.5-4.0 ug for IP and 1:500-1:2000
for WB
IHC 1:500-1:2000

Applications

Applications testées:
IHC, IP, WB, ELISA

Demandes citées:
IHC, WB

Spécificité de l'espèce:
Humain, rat, souris

Espèces citées:
Humain, porc, rat, souris

Contrôles positifs:

WB : cellules COS-7, cellules HeLa, cellules HepG2, cellules Jurkat, tissu cérébral de rat, tissu cérébral de souris

IP : tissu rénal de souris,

IHC : tissu de cancer de la prostate humain, tissu cérébral de souris

Remarque-IHC: il est suggéré de démasquer l'antigène avec un tampon de TE buffer pH 9,0; (*) À défaut, 'le démasquage de l'antigène peut être effectué avec un tampon citrate pH 6,0.

Informations générales

PSEN1(presenilin-1) is also named as AD3, PS1, PSNL1 and belongs to the peptidase A22A family. It directly influences Netrin/DCC signaling with cell type precision and spatiotemporal specificity, and is a key neural circuit builder that gates the spatiotemporal pattern of guidance signaling, thereby ensuring neural projections occur with high fidelity(PMID:21215373). The 46-kDa PSEN1 holoprotein is cleaved into a D30-kDa N-terminal fragment (NTF) and a D20-kDa C-terminal fragment (CTF) by the 26S proteasome(PMID:10527805). It has 7 isoforms produced by alternative splicing. This antibody is specific to isoform1(53 kDa), isoform2(52 kDa), isoform4(21 kDa), isoform7(49 kDa) of this protein.

Publications notables

Autrice	Pubmed ID	Journal	Application
Laura Gerosa	35613587	Cell Rep	WB
Muhammad Mushtaq	29029400	Oncotarget	IHC
Xiaoqing Zhang	33723239	Cell Death Discov	WB

Stockage

Stockage:

Stocker à -20°C. Stable pendant un an après l'expédition.

Tampon de stockage:

PBS avec azoture de sodium à 0,02 % et glycérol à 50 % pH 7,3

L'aliquotage n'est pas nécessaire pour le stockage à -20C

*** Les 20ul contiennent 0,1% de BSA.

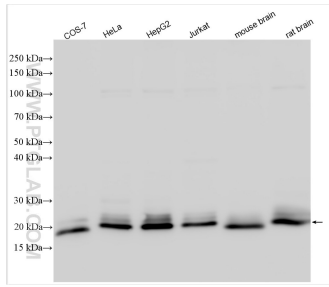
For technical support and original validation data for this product please contact:

T: 1 (888) 4PTGLAB (1-888-478-4522) (toll free in USA), or 1(312) 455-8498 (outside USA)

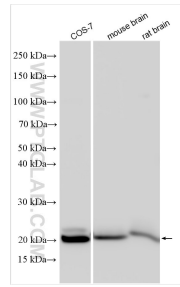
E: proteintech@ptglab.com
W: ptglab.com

This product is exclusively available under Proteintech Group brand and is not available to purchase from any other manufacturer.

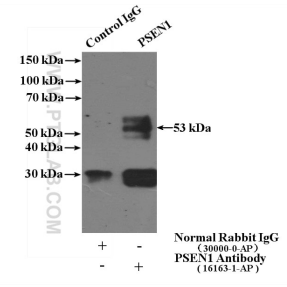
Données de validation sélectionnées



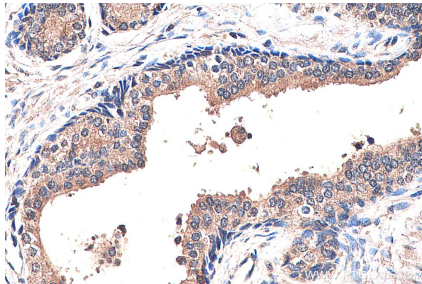
Various lysates were subjected to SDS PAGE followed by western blot with 16163-1-AP (Presenilin-1-Specific antibody) at dilution of 1:4000 incubated at room temperature for 1.5 hours.



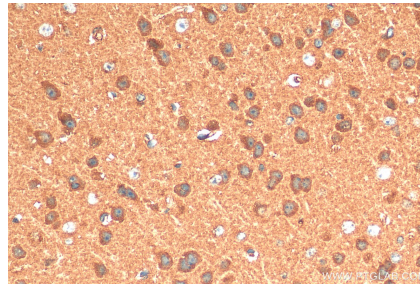
Various lysates were subjected to SDS PAGE followed by western blot with 16163-1-AP (Presenilin-1-Specific antibody) at dilution of 1:3000 incubated at room temperature for 1.5 hours.



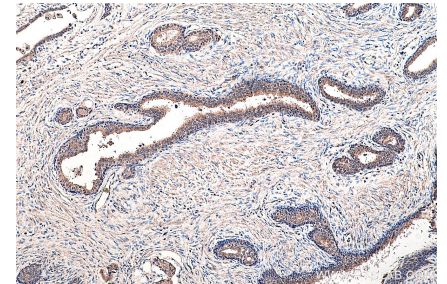
IP Result of anti-Presenilin-1-Specific (IP:16163-1-AP, 4ug; Detection:16163-1-AP 1:1000) with mouse kidney tissue lysate 4000ug.



Immunohistochemical analysis of paraffin-embedded human prostate cancer tissue slide using 16163-1-AP (Presenilin-1-Specific antibody) at dilution of 1:1000 (under 40x lens). Heat mediated antigen retrieval with Tris-EDTA buffer (pH 9.0).



Immunohistochemical analysis of paraffin-embedded mouse brain tissue slide using 16163-1-AP (Presenilin-1-Specific antibody) at dilution of 1:1000 (under 40x lens). Heat mediated antigen retrieval with Tris-EDTA buffer (pH 9.0).



Immunohistochemical analysis of paraffin-embedded human prostate cancer tissue slide using 16163-1-AP (Presenilin-1-Specific antibody) at dilution of 1:1000 (under 10x lens). Heat mediated antigen retrieval with Tris-EDTA buffer (pH 9.0).