

À des fins de recherche uniquement

Anticorps Polyclonal de lapin anti-Palladin-Specific



Numéro de catalogue: 16179-1-AP

Informations de base

Numéro de catalogue:
16179-1-AP

Taille:
150ul, Concentration: 133 µg/ml by
Bradford method using BSA as the
standard;

Hôte:
Lapin

Isotype:
IgG

Numéro d'acquisition GenBank:
NM_016081

Identification du gène (NCBI):
23022

Nom complet:
palladin, cytoskeletal associated
protein

MW calculé
151 kDa

MW observés:
120 kDa

Méthode de purification:
Purification par affinité contre
l'antigène

Dilutions recommandées:
WB 1:500-1:1000
IP 0.5-4.0 ug for IP and 1:200-1:1000
for WB

Applications

Applications testées:
IP, WB, ELISA

Spécificité de l'espèce:
Humain

Contrôles positifs:

WB : cellules HeLa,

IP : cellules HeLa,

Informations générales

Palladin is a widely expressed protein found in stress fibers, focal adhesions, growth cones, Z-discs, and other actin-based subcellular structures. It belongs to a small gene family that includes the Z-disc proteins myopalladin and myotilin. It is a cytoskeletal protein required for organization of normal actin cytoskeleton. It functions in establishing cell morphology, motility, cell adhesion and cell-extracellular matrix interactions in a variety of cell types. This antibody, generated against N-terminal peptide of palladin, recognizes 200 kDa, 140 kDa, and 65 kDa isoforms of this protein.

Stockage

Stockage:

Stocker à -20°C. Stable pendant un an après l'expédition.

Tampon de stockage:

PBS avec azoture de sodium à 0,02 % et glycérol à 50 % pH 7,3

L'aliquotage n'est pas nécessaire pour le stockage à -20C

*** Les 20ul contiennent 0,1% de BSA.

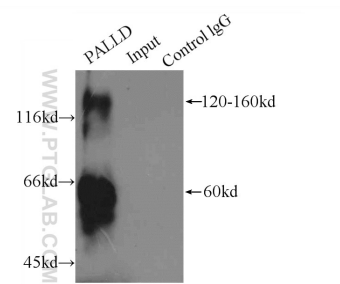
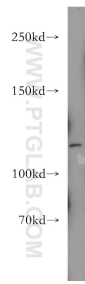
For technical support and original validation data for this product please contact:

T: 1 (888) 4PTGLAB (1-888-478-4522) (toll free
in USA), or 1(312) 455-8498 (outside USA)

E: proteintech@ptglab.com
W: ptglab.com

This product is exclusively available under Proteintech Group brand and is not available to purchase from any other manufacturer.

Données de validation sélectionnées



HeLa cells were subjected to SDS PAGE followed by western blot with 16179-1-AP (Palladin-Specific antibody) at dilution of 1:200 incubated at room temperature for 1.5 hours.

IP Result of anti-Palladin-Specific (IP:16179-1-AP, 4ug; Detection:16179-1-AP 1:200) with HeLa cells lysate 1500ug.