

À des fins de recherche uniquement

Anticorps Polyclonal de lapin anti-ING1-specific



Numéro de catalogue: 16185-1-AP

1 Publications

Informations de base

Numéro de catalogue:
16185-1-AP

Taille:
150ul, Concentration: 133 µg/ml by
Bradford method using BSA as the
standard;

Hôte:
Lapin

Isotype:
IgG

Numéro d'acquisition GenBank:
NM_198218

Identification du gène (NCBI):
3621

Nom complet:
inhibitor of growth family, member 1

MW calculé
47 kDa

MW observés:
30 kDa

Méthode de purification:
Purification par affinité contre
l'antigène

Dilutions recommandées:
WB 1:500-1:1000
IP 0.5-4.0 ug for IP and 1:200-1:1000
for WB

Applications

Applications testées:
IP, WB, ELISA

Demandes citées:
WB

Spécificité de l'espèce:
Humain, souris

Espèces citées:
rat¹

Contrôles positifs:

WB : tissu cardiaque humain,

IP : tissu cardiaque de souris,

Informations générales

Members of inhibitor of growth (ING) family function in inhibiting cell growth and inducing apoptosis. They are sequence homologous proteins. ING1 is the first identified one, interacting with TP53 and is a component of the p53 signaling pathway. Multiple alternatively spliced transcript variants encoding distinct isoforms of ING1 have been reported. This antibody recognizes all 24/33/47kd isoforms of ING1, but will not bind ING2, 3 or 4.

Stockage

Stockage:

Stocker à -20°C. Stable pendant un an après l'expédition.

Tampon de stockage:

PBS avec azoture de sodium à 0,02 % et glycérol à 50 % pH 7,3

L'aliquotage n'est pas nécessaire pour le stockage à -20C

*** Les 20ul contiennent 0,1% de BSA.

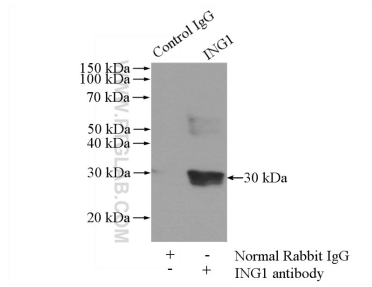
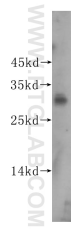
For technical support and original validation data for this product please contact:

T: 1 (888) 4PTGLAB (1-888-478-4522) (toll free
in USA), or 1(312) 455-8498 (outside USA)

E: proteintech@ptglab.com
W: ptglab.com

This product is exclusively available under Proteintech Group brand and is not available to purchase from any other manufacturer.

Données de validation sélectionnées



human heart tissue were subjected to SDS PAGE followed by western blot with 16185-1-AP (ING1-specific antibody) at dilution of 1:300 incubated at room temperature for 1.5 hours.

IP Result of anti-ING1-specific (IP:16185-1-AP, 2ug; Detection:16185-1-AP 1:300) with mouse heart tissue lysate 4000ug.