

À des fins de recherche uniquement

Anticorps Polyclonal de lapin anti-Claudin 4-specific



Numéro de catalogue: 16195-1-AP

Phare

32 Publications

Informations de base

Numéro de catalogue:

16195-1-AP

Taille:

150ul, Concentration: 300 µg/ml by Nanodrop and 267 µg/ml by Bradford method using BSA as the standard;

Hôte:

Lapin

Isotype:

IgG

Numéro d'acquisition GenBank:

NM_001305

Identification du gène (NCBI):

1364

Nom complet:

claudin 4

MW calculé

22 kDa

MW observés:

22 kDa

Méthode de purification:

Purification par affinité contre l'antigène

Dilutions recommandées:

WB 1:200-1:1000

IP 0.5-4.0 ug for IP and 1:200-1:1000 for WB

IHC 1:50-1:500

IF 1:50-1:500

Applications

Applications testées:

IF, IHC, IP, WB, ELISA

Demandes citées:

IF, IHC, RIP, WB

Spécificité de l'espèce:

Humain, rat, souris

Espèces citées:

Humain, porc, rat, souris

Remarque-IHC: il est suggéré de démasquer l'antigène avec un tampon de TE buffer pH 9,0; (*) À défaut, 'le démasquage de l'antigène peut être 'effectué avec un tampon citrate pH 6,0.

Contrôles positifs:

WB : cellules MDA-MB-453s, tissu d'intestin grêle de souris, tissu placentaire humain

IP : tissu placentaire humain,

IHC : tissu de cancer du sein humain, tissu de tumeur ovarienne humain

IF : tissu de cancer du sein humain,

Informations générales

Claudins are a family of proteins that are the most important components of tight junctions, where they establish the paracellular barrier that controls the flow of molecules in the intercellular space between the cells of an epithelium. They are small (20-27 kDa) proteins with very similar structures. They have four transmembrane domains, with the N-terminus and the C-terminus in the cytoplasm. This antibody is specifically against claudin 4.

Publications notables

Autrice	Pubmed ID	Journal	Application
Yijin Xiang	34616481	Evid Based Complement Alternat Med	WB
Jian Huang	36189316	Front Immunol	WB
Li Qian	36263717	Food Funct	IHC

Stockage

Stockage:

Stocker à -20°C. Stable pendant un an après l'expédition.

Tampon de stockage:

PBS avec azoture de sodium à 0,02 % et glycérol à 50 % pH 7,3

L'aliquotage n'est pas nécessaire pour le stockage à -20C

*** Les 20ul contiennent 0,1% de BSA.

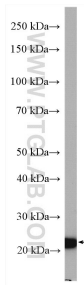
For technical support and original validation data for this product please contact:

T: 1 (888) 4PTGLAB (1-888-478-4522) (toll free in USA), or 1(312) 455-8498 (outside USA)

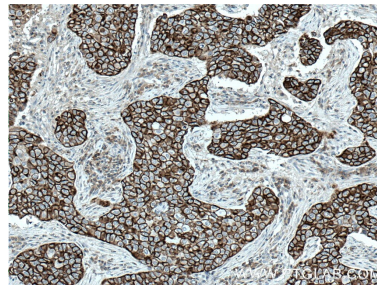
E: proteintech@ptglab.com
W: ptglab.com

This product is exclusively available under Proteintech Group brand and is not available to purchase from any other manufacturer.

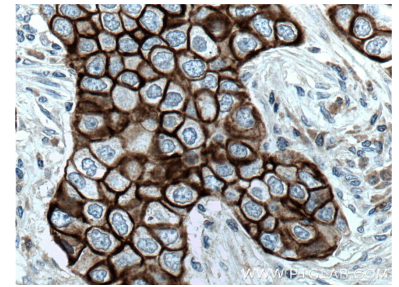
Données de validation sélectionnées



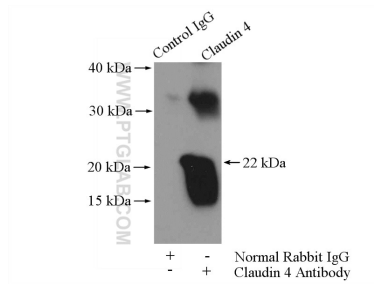
MDA-MB-453s cells were subjected to SDS PAGE followed by western blot with 16195-1-AP (Claudin 4-specific antibody) at dilution of 1:300 incubated at room temperature for 1.5 hours.



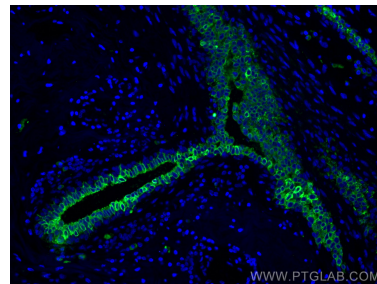
Immunohistochemical analysis of paraffin-embedded human breast cancer tissue slide using 16195-1-AP (Claudin 4-specific antibody) at dilution of 1:200 (under 10x lens. Heat mediated antigen retrieval with Tris-EDTA buffer (pH 9.0).



Immunohistochemical analysis of paraffin-embedded human breast cancer tissue slide using 16195-1-AP (Claudin 4-specific antibody) at dilution of 1:200 (under 40x lens. Heat mediated antigen retrieval with Tris-EDTA buffer (pH 9.0).



IP Result of anti-Claudin 4-specific (IP:16195-1-AP, 4ug; Detection:16195-1-AP 1:300) with human placenta tissue lysate 4400ug.



Immunofluorescent analysis of (4% PFA) fixed human breast cancer tissue using Claudin 4-specific antibody (16195-1-AP) at dilution of 1:200 and CoraLite®488-Conjugated AffiniPure Goat Anti-Rabbit IgG(H+L).