

À des fins de recherche uniquement

# Anticorps Polyclonal de lapin anti-Claudin 9-specific



Numéro de catalogue: 16196-1-AP

2 Publications

## Informations de base

Numéro de catalogue:

16196-1-AP

Taille:

150ul, Concentration: 153 µg/ml by Bradford method using BSA as the standard;

Hôte:

Lapin

Isotype:

IgG

Numéro d'acquisition GenBank:

NM\_020982

Identification du gène (NCBI):

9080

Nom complet:

claudin 9

MW calculé

23 kDa

MW observés:

25-29 kDa

Méthode de purification:

Purification par affinité contre l'antigène

Dilutions recommandées:

WB 1:200-1:1000

IP 0.5-4.0 ug for IP and 1:200-1:1000 for WB

## Applications

Applications testées:

IP, WB, ELISA

Demandes citées:

IHC, WB

Spécificité de l'espèce:

Humain, rat, souris

Espèces citées:

Humain, rat

Contrôles positifs:

WB : cellules HeLa,

IP : cellules HeLa,

## Informations générales

Claudins are a family of proteins that are the most important components of the tight junctions, where they establish the paracellular barrier that controls the flow of molecules in the intercellular space between the cells of an epithelium. 23 claudins have been identified. They are small (20-27 kilodalton (kDa)) proteins with very similar structure. They have four transmembrane domains, with the N-terminus and the C-terminus in the cytoplasm. This antibody is specifically against claudin 9.

## Publications notables

Autrice	Pubmed ID	Journal	Application
Zezhong Mou	33424916	Front Genet	WB
Kratzer Ingrid I	22886143	Histochem Cell Biol	WB, IHC

## Stockage

Stockage:

Stocker à -20°C. Stable pendant un an après l'expédition.

Tampon de stockage:

PBS avec azoture de sodium à 0,02 % et glycérol à 50 % pH 7,3

L'aliquotage n'est pas nécessaire pour le stockage à -20C

\*\*\* Les 20ul contiennent 0,1% de BSA.

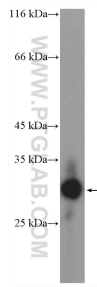
For technical support and original validation data for this product please contact:

T: 1 (888) 4PTGLAB (1-888-478-4522) (toll free in USA), or 1(312) 455-8498 (outside USA)

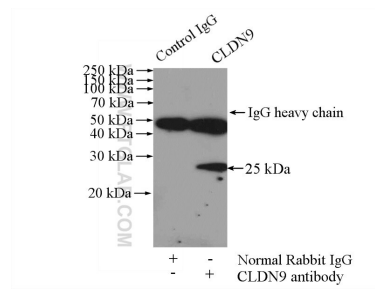
E: [proteintech@ptglab.com](mailto:proteintech@ptglab.com)  
W: [ptglab.com](http://ptglab.com)

This product is exclusively available under Proteintech Group brand and is not available to purchase from any other manufacturer.

## Données de validation sélectionnées



HeLa cells were subjected to SDS PAGE followed by western blot with 16196-1-AP (Claudin 9-specific antibody) at dilution of 1:300 incubated at room temperature for 1.5 hours.



IP Result of anti-Claudin 9-specific (IP:16196-1-AP, 4ug; Detection:16196-1-AP 1:300) with HeLa cells lysate 880ug.