

À des fins de recherche uniquement

Anticorps Polyclonal de lapin anti-MTF2



Numéro de catalogue: 16208-1-AP

Phare

25 Publications

Informations de base

Numéro de catalogue:
16208-1-AP

Taille:
150ul, Concentration: 700 µg/ml by Nanodrop and 287 µg/ml by Bradford method using BSA as the standard;

Hôte:
Lapin

Isotype:
IgG

Immunogen Catalog Number:
AG9182

Numéro d'acquisition GenBank:
BC010013

Identification du gène (NCBI):
22823

Nom complet:
metal response element binding transcription factor 2

MW calculé
536 aa, 61 kDa

MW observés:
67 kDa, 60 kDa, 60-61 kDa

Méthode de purification:
Purification par affinité contre l'antigène

Dilutions recommandées:
WB 1:200-1:1000
IP 0.5-4.0 ug for IP and 1:200-1:1000 for WB
IHC 1:20-1:200
IF 1:50-1:200

Applications

Applications testées:
IF, IHC, IP, WB, ELISA

Demandes citées:
ChIP, IF, IHC, IP, WB

Spécificité de l'espèce:
Humain, rat, souris

Espèces citées:
Humain, souris

Remarque-IHC: il est suggéré de démasquer l'antigène avec un tampon de TE buffer pH 9.0; (*) A défaut, le démasquage de l'antigène peut être effectué avec un tampon citrate pH 6,0.

Contrôles positifs:

WB: cellules HepG2, cellules Jurkat, cellules SE de souris et cellules 293

IP: tissu de muscle squelettique de souris,

IHC: tissu cérébral humain,

IF: cellules SE de souris,

Informations générales

MTF2, also named as Metal-response element-binding transcription factor 2, is a 593 amino acid protein. It exists several isoforms and the range of the molecular weight of isoforms are about 55-60 kDa and 29 kDa. MTF2 contains 2 PHD-type zinc fingers and belongs to the Polycomb-like family. MTF2 acts by binding to H3K36me3, a mark for transcriptional activation, and recruiting the PRC2 complex, leading to enhance PRC2 H3K27me3 methylation activity and regulates the transcriptional networks during embryonic stem cell self-renewal and differentiation.

Publications notables

| Autrice | Pubmed ID | Journal | Application |
|----------------|-----------|---------------------|-------------|
| Manuel Beltran | 31548724 | Nat Struct Mol Biol | WB |
| Evan Healy | 31521505 | Mol Cell | WB |
| Haojie Li | 28869966 | Nature | WB |

Stockage

Stockage:

Stocker à -20°C. Stable pendant un an après l'expédition.

Tampon de stockage:

PBS avec azoture de sodium à 0,02 % et glycérol à 50 % pH 7,3

L'aliquotage n'est pas nécessaire pour le stockage à -20°C

*** Les 20ul contiennent 0,1% de BSA.

For technical support and original validation data for this product please contact:

T: 1 (888) 4PTGLAB (1-888-478-4522) (toll free in USA), or 1(312) 455-8498 (outside USA)

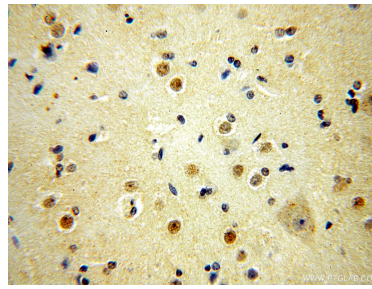
E: proteintech@ptglab.com
W: ptglab.com

This product is exclusively available under Proteintech Group brand and is not available to purchase from any other manufacturer.

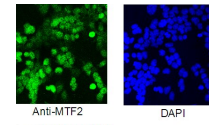
Données de validation sélectionnées



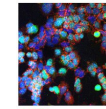
HepG2 cells were subjected to SDS PAGE followed by western blot with 16208-1-AP (MTF2 antibody) at dilution of 1:300 incubated at room temperature for 1.5 hours.



Immunohistochemical analysis of paraffin-embedded human brain using 16208-1-AP (MTF2 antibody) at dilution of 1:50 (under 40x lens).

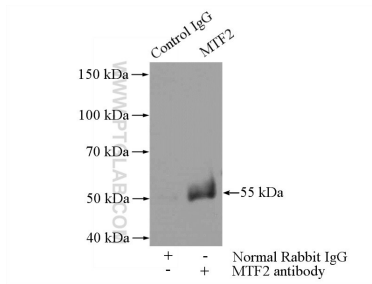


IF result of mouse ES cell. From Kevin Corbit.



MTF2
E-cadherin
DAPI

IF result of mouse ES cell From Kevin Corbit.



IP Result of anti-MTF2 (IP:16208-1-AP, 4 μ g; Detection:16208-1-AP 1:300) with mouse skeletal muscle tissue lysate 4000 μ g.