

À des fins de recherche uniquement

# Anticorps Polyclonal de lapin anti-ASS1



Numéro de catalogue: 16210-1-AP

Phare

26 Publications

## Informations de base

Numéro de catalogue:  
16210-1-AP

Taille:  
150ul, Concentration: 600 µg/ml by Nanodrop and 400 µg/ml by Bradford method using BSA as the standard;

Hôte:  
Lapin

Isotype:  
IgG

Immunogen Catalog Number:  
AG9200

Numéro d'acquisition GenBank:  
BC009243

Identification du gène (NCBI):  
445

Nom complet:  
argininosuccinate synthetase 1

MW calculé  
412 aa, 47 kDa

MW observés:  
45 kDa

Méthode de purification:  
Purification par affinité contre l'antigène

Dilutions recommandées:  
IP 0.5-4.0 ug for IP and 1:500-1:3000 for WB  
IHC 1:50-1:500  
IF 1:50-1:500

## Applications

Applications testées:  
IF, IHC, IP, ELISA

Demandes citées:  
CoIP, IF, IHC, WB

Spécificité de l'espèce:  
Humain, rat, souris

Espèces citées:  
Humain, rat, souris

**Remarque-IHC: il est suggéré de démasquer l'antigène avec un tampon de TE buffer pH 9.0; (\*) A défaut, le démasquage de l'antigène peut être effectué avec un tampon citrate pH 6,0.**

Contrôles positifs:

IP: cellules HeLa,

IHC: tissu testiculaire humain, tissu de cancer du foie humain, tissu hépatique humain, tissu placentaire humain

IF: cellules HeLa,

## Informations générales

ASS1 is a rate-limiting enzyme in the urea cycle. Citrullinemia type I is an autosomal recessive disorder that is caused by a deficiency of the urea cycle enzyme argininosuccinate synthetase (ASS1). Deficiency of ASS1 shows various clinical manifestations encompassing severely affected patients with fatal neonatal hyperammonemia as well as asymptomatic individuals with only a biochemical phenotype(PMID:19006241).

## Publications notables

Autrice	Pubmed ID	Journal	Application
Xiaorui Yao	29031784	J Ethnopharmacol	WB
Shizhen Qin	27575953	J Proteome Res	WB
Li Zhou	35655758	Front Mol Biosci	WB,IHC

## Stockage

Stockage:

Stocker à -20°C. Stable pendant un an après l'expédition.

Tampon de stockage:

PBS avec azoture de sodium à 0,02 % et glycérol à 50 % pH 7,3

L'aliquotage n'est pas nécessaire pour le stockage à -20C

\*\*\* Les 20ul contiennent 0,1% de BSA.

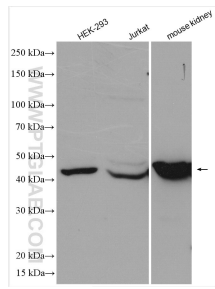
For technical support and original validation data for this product please contact:

T: 1 (888) 4PTGLAB (1-888-478-4522) (toll free in USA), or 1(312) 455-8498 (outside USA)

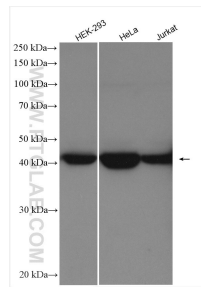
E: proteintech@ptglab.com  
W: ptglab.com

This product is exclusively available under Proteintech Group brand and is not available to purchase from any other manufacturer.

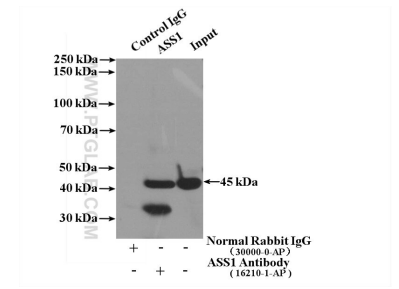
## Données de validation sélectionnées



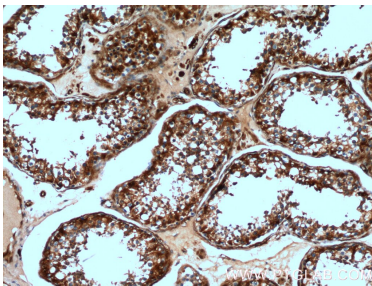
Various lysates were subjected to SDS PAGE followed by western blot with 16210-1-AP (ASS1 antibody) at dilution of 1:8000 incubated at room temperature for 1.5 hours.



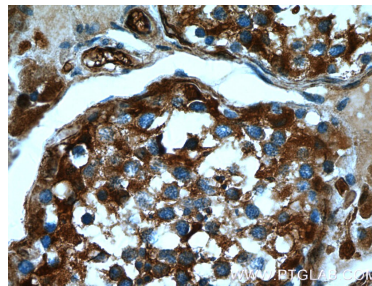
Various lysates were subjected to SDS PAGE followed by western blot with 16210-1-AP (ASS1 antibody) at dilution of 1:20000 incubated at room temperature for 1.5 hours.



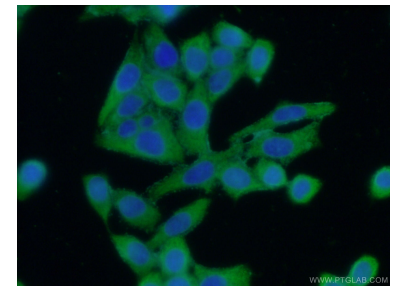
IP Result of anti-ASS1 (IP:16210-1-AP, 4ug; Detection:16210-1-AP 1:1500) with HeLa cells lysate 1600ug.



Immunohistochemical analysis of paraffin-embedded human testis tissue slide using 16210-1-AP (ASS1 Antibody) at dilution of 1:200 (under 10x lens).



Immunohistochemical analysis of paraffin-embedded human testis tissue slide using 16210-1-AP (ASS1 Antibody) at dilution of 1:200 (under 40x lens).



Immunofluorescent analysis of (-20°C Ethanol) fixed HeLa cells using 16210-1-AP (ASS1 antibody) at dilution of 1:50 and Alexa Fluor 488-conjugated AffiniPure Goat Anti-Rabbit IgG(H+L).