

À des fins de recherche uniquement

# Anticorps Polyclonal de lapin anti-MCL1



Numéro de catalogue: 16225-1-AP

Phare

108 Publications

## Informations de base

Numéro de catalogue:  
16225-1-AP

Taille:  
150ul, Concentration: 600 µg/ml by  
Nanodrop;

Hôte:  
Lapin

Isotype:  
IgG

Immunogen Catalog Number:  
AG10397

Numéro d'acquisition GenBank:  
BC107735

Identification du gène (NCBI):  
4170

Nom complet:  
myeloid cell leukemia sequence 1  
(BCL2-related)

MW calculé  
350 aa, 37 kDa

MW observés:  
35-40 kDa

Méthode de purification:  
Purification par affinité contre  
l'antigène

Dilutions recommandées:  
WB 1:1000-1:8000  
IP 0.5-4.0 ug for IP and 1:500-1:2000  
for WB  
IF 1:50-1:500

## Applications

Applications testées:  
FC, IF, IP, WB, ELISA

Demandes citées:  
IF, IHC, IP, WB

Spécificité de l'espèce:  
Humain, rat, souris

Espèces citées:  
Humain, rat, souris

Contrôles positifs:

WB : cellules Jurkat, cellules A431, cellules HEK-293T, cellules HeLa, cellules HL-60, cellules K-562, cellules MCF-7, cellules Raji, tissu cérébral humain, tissu hépatique humain, tissu splénique de souris

IP : cellules Raji,

IF : cellules MCF-7,

## Informations générales

MCL-1 is an anti-apoptotic member of the Bcl-2 family originally isolated from the ML-1 human myeloid leukemia cell line. Similar to BCL2 and BCL2L1, MCL1 can interact with BAX and/or BAK1 to inhibit mitochondria-mediated apoptosis. Mcl-1 is critical for the proliferation and survival of myeloma cells in vitro, and overexpression of Mcl-1 protein in myeloma cells is associated with relapse and short event-free survival in multiple myeloma patients. Recent studies show that MCL-1 is upregulated in numerous haematological and solid tumour malignancies. Therefore, MCL-1 has been suggested as a potential new therapeutic target. MCL-1 can be alternatively spliced into a long form (MCL-1L, 40 kDa) or a short form (MCL-1S, 30 kDa). (PMID: 15467463, PMID: 15147382)

## Publications notables

Autrice	Pubmed ID	Journal	Application
Yanhui Zhu	36183949	J Ethnopharmacol	IF
Liping Shan	33072561	Front Oncol	WB
Yang Gao	32932732	Int J Mol Sci	IHC

## Stockage

Stockage:

Stocker à -20°C. Stable pendant un an après l'expédition.

Tampon de stockage:

PBS avec azoture de sodium à 0,02 % et glycérol à 50 % pH 7,3

L'aliquotage n'est pas nécessaire pour le stockage à -20C

\*\*\* Les 20ul contiennent 0,1% de BSA.

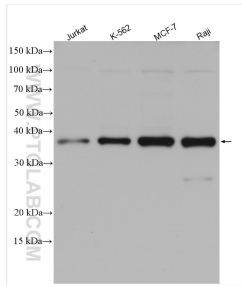
For technical support and original validation data for this product please contact:

T: 1 (888) 4PTGLAB (1-888-478-4522) (toll free  
in USA), or 1(312) 455-8498 (outside USA)

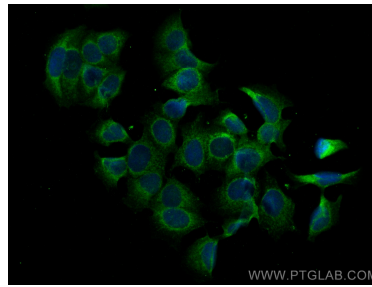
E: [proteintech@ptglab.com](mailto:proteintech@ptglab.com)  
W: [ptglab.com](http://ptglab.com)

This product is exclusively available under Proteintech Group brand and is not available to purchase from any other manufacturer.

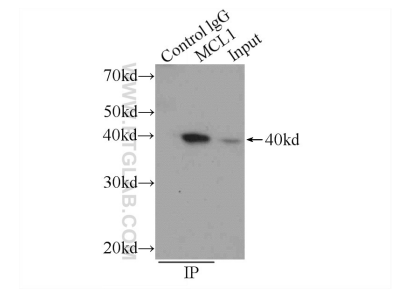
## Données de validation sélectionnées



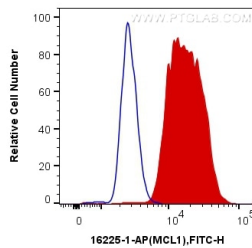
Various lysates were subjected to SDS PAGE followed by western blot with 16225-1-AP (MCL1 antibody) at dilution of 1:4000 incubated at room temperature for 1.5 hours.



Immunofluorescent analysis of (-20°C Methanol) fixed MCF-7 cells using MCL1 antibody (16225-1-AP) at dilution of 1:200 and CoraLite®488-Conjugated AffiniPure Goat Anti-Rabbit IgG(H+L).



IP Result of anti-MCL1 (IP:16225-1-AP, 3ug; Detection:16225-1-AP 1:1000) with Raji cells lysate 800ug.



1X10<sup>6</sup> Ramos cells were intracellularly stained with 0.5 ug Anti-Human MCL1 (16225-1-AP) and CoraLite®488-Conjugated AffiniPure Goat Anti-Rabbit IgG(H+L) at dilution 1:1000 (red), or 0.5 ug Control Antibody. Cells were fixed and permeabilized with Transcription Factor Staining Buffer Kit (PF00011).