

À des fins de recherche uniquement

Anticorps Polyclonal de lapin anti-CAP1



Numéro de catalogue: 16231-1-AP

Phare

5 Publications

Informations de base

Numéro de catalogue:

16231-1-AP

Taille:

150ul, Concentration: 750 µg/ml by Nanodrop;

Hôte:

Lapin

Isotype:

IgG

Immunogen Catalog Number:

AG8876

Numéro d'acquisition GenBank:

BC013963

Identification du gène (NCBI):

10487

Nom complet:

CAP, adenylate cyclase-associated protein 1 (yeast)

MW calculé

475 aa, 52 kDa

MW observés:

52 kDa

Méthode de purification:

Purification par affinité contre l'antigène

Dilutions recommandées:

WB 1:1000-1:6000

IP 0.5-4.0 ug for IP and 1:500-1:1000 for WB

IHC 1:20-1:200

Applications

Applications testées:

FC, IHC, IP, WB, ELISA

Demandes citées:

IF, WB

Spécificité de l'espèce:

Humain, rat, souris

Espèces citées:

bovin, Humain, porc, rat, souris

Remarque-IHC: il est suggéré de démasquer l'antigène avec un tampon de TE buffer pH 9,0; (*) À défaut, le démasquage de l'antigène peut être effectué avec un tampon citrate pH 6,0.

Contrôles positifs:

WB : cellules Caco-2, cellules COLO 320, cellules HepG2

IP : cellules A431,

IHC : tissu de cancer du pancréas humain,

Informations générales

CAP1, also known as CAP, CAP1-PEN, belongs to the CAP family and contains 1 C-CAP/cofactor C-like domain. CAP1 binds to monomeric actin and regulates the actin cytoskeleton to control cell size, adhesion, and migration (PMID: 23737525). CAP1 also functions as a receptor for inflammatory cytokine resistin (PMID: 24606903). CAP1 is an abundant and ubiquitously expressed protein. Western blot analysis detected CAP1 at an apparent molecular mass of 52 kDa.

Publications notables

Autrice	Pubmed ID	Journal	Application
Anika Heinze	36264429	Cell Mol Life Sci	WB
Shunli Yang	31684202	Viruses	WB
Xiaohan Yuan	30847953	Cell Biochem Funct	WB

Stockage

Stockage:

Stocker à -20°C. Stable pendant un an après l'expédition.

Tampon de stockage:

PBS avec azoture de sodium à 0,02 % et glycérol à 50 % pH 7,3

L'aliquotage n'est pas nécessaire pour le stockage à -20C

*** Les 20ul contiennent 0,1% de BSA.

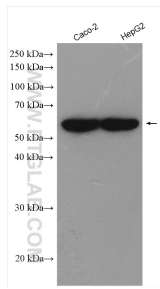
For technical support and original validation data for this product please contact:

T: 1 (888) 4PTGLAB (1-888-478-4522) (toll free in USA), or 1(312) 455-8498 (outside USA)

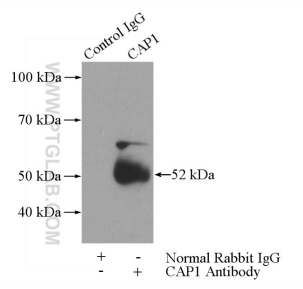
E: proteintech@ptglab.com
W: ptglab.com

This product is exclusively available under Proteintech Group brand and is not available to purchase from any other manufacturer.

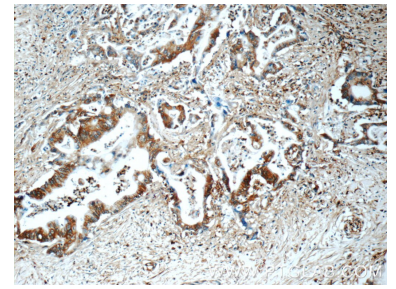
Données de validation sélectionnées



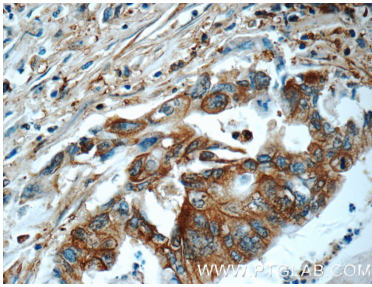
Caco-2 cells were subjected to SDS PAGE followed by western blot with 16231-1-AP (CAP1 antibody) at dilution of 1:3000 incubated at room temperature for 1.5 hours.



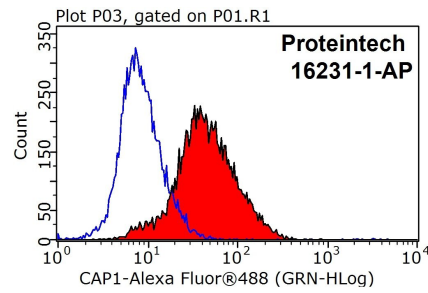
IP Result of anti-CAP1 (IP:16231-1-AP, 3ug; Detection:16231-1-AP 1:500) with A431 cells lysate 1520ug.



Immunohistochemical analysis of paraffin-embedded human pancreas cancer tissue slide using 16231-1-AP (CAP1 Antibody) at dilution of 1:50 (under 10x lens).



Immunohistochemical analysis of paraffin-embedded human pancreas cancer tissue slide using 16231-1-AP (CAP1 Antibody) at dilution of 1:50 (under 40x lens).



1x10⁶ HeLa cells were stained with 0.2ug CAP1 antibody (16231-1-AP, red) and control antibody (blue). Fixed with 90% MeOH blocked with 3% BSA (30 min). Alexa Fluor 488-conjugated AffiniPure Goat Anti-Rabbit IgG(H+L) with dilution 1:1000.