

À des fins de recherche uniquement

Anticorps Polyclonal de lapin anti-EXO1



Numéro de catalogue: 16253-1-AP

Phare

6 Publications

Informations de base

Numéro de catalogue:
16253-1-AP

Taille:
150ul, Concentration: 850 µg/ml by
Nanodrop;

Hôte:
Lapin

Isotype:
IgG

Immunogen Catalog Number:
AG9253

Numéro d'acquisition GenBank:
BC007491

Identification du gène (NCBI):
9156

Nom complet:
exonuclease 1

MW calculé
94 kDa

MW observés:
115-120 kDa

Méthode de purification:
Purification par affinité contre
l'antigène

Dilutions recommandées:
WB 1:2000-1:16000
IP 0.5-4.0 µg for IP and 1:500-1:1000
for WB

Applications

Applications testées:
IP, WB, ELISA

Demandes citées:
WB

Spécificité de l'espèce:
Humain, souris

Espèces citées:
Humain, rat

Contrôles positifs:

WB : cellules HEK-293T, cellules HeLa, cellules Jurkat,
cellules Raji

IP : tissu de thymus de souris,

Informations générales

EXO1, also named as HEX1, is a 846 amino acid protein, which belongs to the XPG/RAD2 endonuclease family. EXO1 subfamily. EXO1 is highly expressed in bone marrow, testis and thymus and at lower levels in colon, lymph nodes, ovary, placenta, prostate, small intestine, spleen and stomach. EXO1 as 5'->3' double-stranded DNA exonuclease, which may also possess a cryptic 3'->5' double-stranded DNA exonuclease activity. EXO1 functions in DNA mismatch repair (MMR) to excise mismatch-containing DNA tracts directed by strand breaks located either 5' or 3' to the mismatch. The calculated molecular weight of EXO1 is 94 kDa, but the modified EXO1 protein is about 115 kDa.

Publications notables

Autrice	Pubmed ID	Journal	Application
Margaret Tammaro	26420828	Nucleic Acids Res	WB
Christopher B Nelson	33841503	Front Genet	WB
Xinliang Zou	35900670	J Cardiovasc Transl Res	WB

Stockage

Stockage:

Stocker à -20°C. Stable pendant un an après l'expédition.

Tampon de stockage:

PBS avec azoture de sodium à 0,02 % et glycérol à 50 % pH 7,3

L'aliquotage n'est pas nécessaire pour le stockage à -20C

*** Les 20ul contiennent 0,1% de BSA.

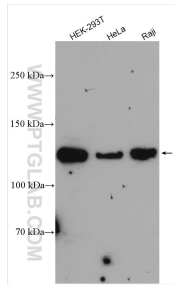
For technical support and original validation data for this product please contact:

T: 1 (888) 4PTGLAB (1-888-478-4522) (toll free
in USA), or 1(312) 455-8498 (outside USA)

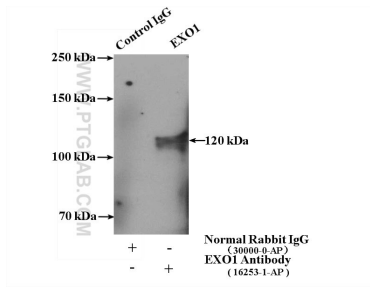
E: proteintech@ptglab.com
W: ptglab.com

This product is exclusively available under Proteintech Group brand and is not available to purchase from any other manufacturer.

Données de validation sélectionnées



Various lysates were subjected to SDS PAGE followed by western blot with 16253-1-AP (EXO1 antibody) at dilution of 1:8000 incubated at room temperature for 1.5 hours.



IP Result of anti-EXO1 (IP:16253-1-AP, 4ug; Detection:16253-1-AP 1:500) with mouse thymus tissue lysate 2800ug.