

À des fins de recherche uniquement

# Anticorps Polyclonal de lapin anti-SYAP1



Numéro de catalogue: 16272-1-AP

Phare

3 Publications

## Informations de base

<b>Numéro de catalogue:</b> 16272-1-AP	<b>Numéro d'acquisition GenBank:</b> BC014657	<b>Méthode de purification:</b> Purification par affinité contre l'antigène
<b>Taille:</b> 150ul, Concentration: 300 µg/ml by Nanodrop and 193 µg/ml by Bradford method using BSA as the standard;	<b>Identification du gène (NCBI):</b> 94056	<b>Dilutions recommandées:</b> WB 1:1000-1:6000 IHC 1:50-1:500 IF 1:20-1:200
<b>Hôte:</b> Lapin	<b>Nom complet:</b> synapse associated protein 1, SAP47 homolog (Drosophila)	
<b>Isotype:</b> IgG	<b>MW calculé:</b> 352 aa, 40 kDa	
<b>Immunogen Catalog Number:</b> AG9342	<b>MW observés:</b> 50-55 kDa	

## Applications

### Applications testées:

IF, IHC, WB, ELISA

### Demandes citées:

IF, WB

### Spécificité de l'espèce:

Humain, rat, souris

### Espèces citées:

souris

**Remarque-IHC: il est suggéré de démasquer l'antigène avec un tampon de TE buffer pH 9,0; (\*) A défaut, 'le démasquage de l'antigène peut être effectué avec un tampon citrate pH 6,0.**

### Contrôles positifs:

**WB:** cellules HEK-293, cellules A431, cellules HepG2, cellules LO2, cellules SMMC-7721, tissu hépatique de souris, tissu pulmonaire de rat, tissu pulmonaire de souris

**IHC:** tissu de cancer du col de l'utérus humain, tissu d'intestin grêle humain

**IF:** cellules HepG2, cellules A431

## Informations générales

SYAP1 (Synapse-associated protein 1) is a human homologue of the Drosophila SAP47 (synapse associated protein), which is recognized by a monoclonal antibody that selectively stain synaptic terminals. This protein is a 352 amino acid protein that is ubiquitously expressed in adult tissues. SYAP1 contains one BSD domain which is an approximately 60 amino acid long protein domain named after the BTF2-like transcription factors, Synapse-associated proteins and DOS2-like proteins in which it is found.

## Publications notables

Autrice	Pubmed ID	Journal	Application
Dominique Schmitt	27344443	Histochem Cell Biol	WB, IF
Cora R von Collenberg	31118165	Biol Open	IF
Xinxin Zuo	33398173	Nat Struct Mol Biol	WB

## Stockage

### Stockage:

Stocker à -20°C. Stable pendant un an après l'expédition.

### Tampon de stockage:

PBS avec azoture de sodium à 0,02 % et glycérol à 50 % pH 7,3

L'aliquotage n'est pas nécessaire pour le stockage à -20C

\*\*\* Les 20ul contiennent 0,1% de BSA.

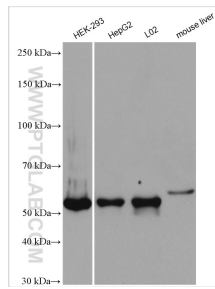
For technical support and original validation data for this product please contact:

T: 1 (888) 4PTGLAB (1-888-478-4522) (toll free in USA), or 1(312) 455-8498 (outside USA)

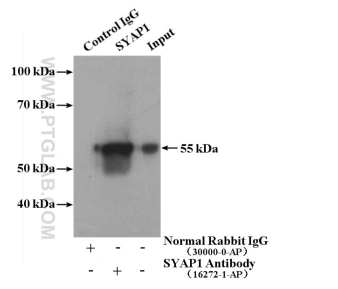
E: proteintech@ptglab.com  
W: ptglab.com

This product is exclusively available under Proteintech Group brand and is not available to purchase from any other manufacturer.

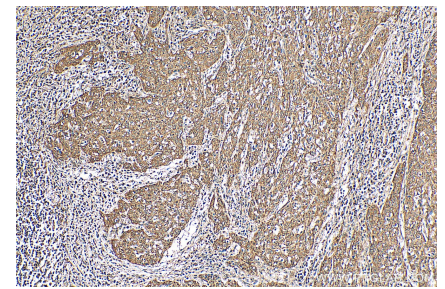
## Données de validation sélectionnées



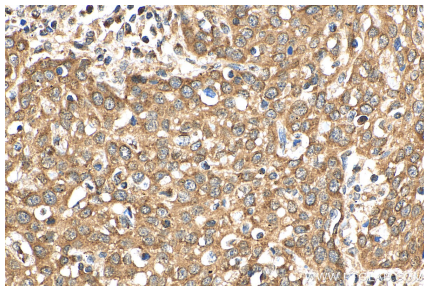
Various lysates were subjected to SDS PAGE followed by western blot with 16272-1-AP (SYAP1 antibody) at dilution of 1:3000 incubated at room temperature for 1.5 hours.



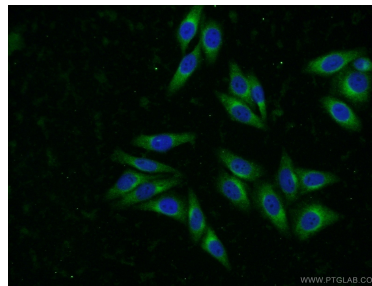
IP Result of anti-SYAP1 (IP:16272-1-AP, 4ug; Detection:16272-1-AP 1:500) with L02 cells lysate 1800ug.



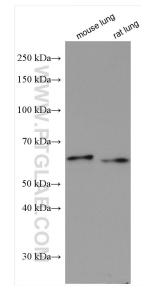
Immunohistochemical analysis of paraffin-embedded human cervical cancer tissue slide using 16272-1-AP (SYAP1 antibody) at dilution of 1:200 (under 10x lens). Heat mediated antigen retrieval with Tris-EDTA buffer (pH 9.0).



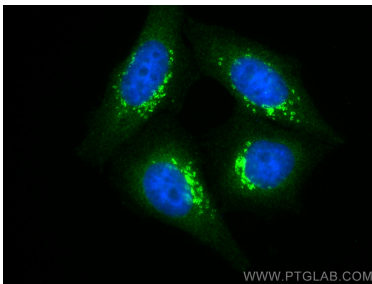
Immunohistochemical analysis of paraffin-embedded human cervical cancer tissue slide using 16272-1-AP (SYAP1 antibody) at dilution of 1:200 (under 40x lens). Heat mediated antigen retrieval with Tris-EDTA buffer (pH 9.0).



Immunofluorescent analysis of HepG2 cells using 16272-1-AP (SYAP1 antibody) at dilution of 1:50 and Alexa Fluor 488-conjugated AffiniPure Goat Anti-Rabbit IgG(H+L).



Various lysates were subjected to SDS PAGE followed by western blot with 16272-1-AP (SYAP1 antibody) at dilution of 1:2000 incubated at room temperature for 1.5 hours.



Immunofluorescent analysis of (4% PFA) fixed HepG2 cells using SYAP1 antibody (16272-1-AP) at dilution of 1:200 and CoraLite®488-Conjugated AffiniPure Goat Anti-Rabbit IgG(H+L).