

À des fins de recherche uniquement

# Anticorps Polyclonal de lapin anti-DHRS1



Numéro de catalogue: 16275-1-AP

## Informations de base

<b>Numéro de catalogue:</b> 16275-1-AP	<b>Numéro d'acquisition GenBank:</b> BC014057	<b>Méthode de purification:</b> Purification par affinité contre l'antigène
<b>Taille:</b> 150ul , Concentration: 350 µg/ml by Nanodrop and 187 µg/ml by Bradford method using BSA as the standard;	<b>Identification du gène (NCBI):</b> 115817	<b>Dilutions recommandées:</b> WB 1:1000-1:6000 IHC 1:50-1:500 IF 1:50-1:500
<b>Hôte:</b> Lapin	<b>Nom complet:</b> dehydrogenase/reductase (SDR family) member 1	
<b>Isotype:</b> IgG	<b>MW calculé</b> 313 aa, 34 kDa	
<b>Immunogen Catalog Number:</b> AG9351	<b>MW observés:</b> 35-38 kDa	

## Applications

### Applications testées:

IF, IHC, WB, ELISA

### Spécificité de l'espèce:

Humain, rat, souris

**Remarque-IHC: il est suggéré de démasquer l'antigène avec un tampon de TE buffer pH 9,0; (\*) À défaut, 'le démasquage de l'antigène peut être effectué avec un tampon citrate pH 6,0.**

### Contrôles positifs:

**WB :** cellules COLO 320, tissu de côlon de souris, tissu hépatique humain, tissu testiculaire de souris

**IHC :** tissu rénal humain, tissu cutané humain, tissu hépatique humain

**IF :** cellules A431,

## Informations générales

DHRS1(Dehydrogenase/reductase SDR family member 1) is also named as LJ25430, MGC20204, DKFZp586l0523, SDR19C1, FLJ14250 and belongs to the short-chain dehydrogenases/reductases (SDR) family. It is involved in the metabolism of a large variety of compounds, including steroid hormones, prostaglandins, retinoids, lipids and xenobiotics. Northern blot analysis detected DHRS1 express in heart highest and in liver lowest.

## Stockage

### Stockage:

Stocker à -20°C. Stable pendant un an après l'expédition.

### Tampon de stockage:

PBS avec azoture de sodium à 0,02 % et glycérol à 50 % pH 7,3

L'aliquotage n'est pas nécessaire pour le stockage à -20C

\*\*\* Les 20ul contiennent 0,1% de BSA.

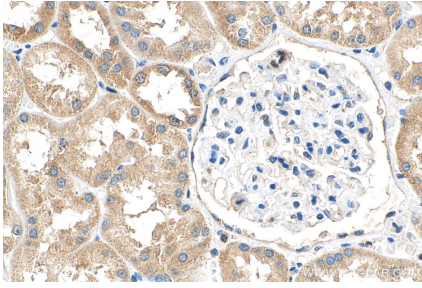
For technical support and original validation data for this product please contact:

T: 1 (888) 4PTGLAB (1-888-478-4522) (toll free in USA), or 1(312) 455-8498 (outside USA)

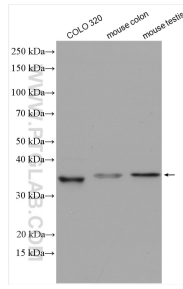
E: proteintech@ptglab.com  
W: ptglab.com

This product is exclusively available under Proteintech Group brand and is not available to purchase from any other manufacturer.

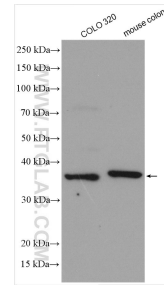
## Données de validation sélectionnées



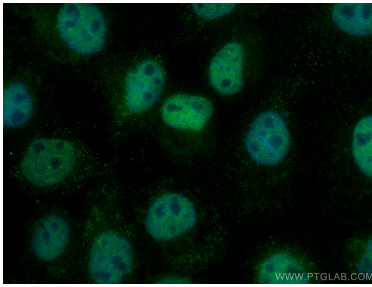
Immunohistochemical analysis of paraffin-embedded human kidney tissue slide using 16275-1-AP (DHRS1 antibody) at dilution of 1:200 (under 40x lens). Heat mediated antigen retrieval with Tris-EDTA buffer (pH 9.0).



Various lysates were subjected to SDS PAGE followed by western blot with 16275-1-AP (DHRS1 antibody) at dilution of 1:1500 incubated at room temperature for 1.5 hours.



Various lysates were subjected to SDS PAGE followed by western blot with 16275-1-AP (DHRS1 antibody) at dilution of 1:3000 incubated at room temperature for 1.5 hours.



Immunofluorescent analysis of (4% PFA) fixed A431 cells using DHRS1 antibody (16275-1-AP) at dilution of 1:200 and Coralite@488-Conjugated AffiniPure Goat Anti-Rabbit IgG(H+L).