

À des fins de recherche uniquement

Anticorps Polyclonal de lapin anti-HN1L



Numéro de catalogue: 16285-1-AP

Informations de base

Numéro de catalogue: 16285-1-AP	Numéro d'acquisition GenBank: BC014438	Méthode de purification: Purification par affinité contre l'antigène
Taille: 150ul , Concentration: 150 µg/ml by Nanodrop and 227 µg/ml by Bradford method using BSA as the standard;	Identification du gène (NCBI): 90861	Dilutions recommandées: WB 1:500-1:2000
Hôte: Lapin	Nom complet: hematological and neurological expressed 1-like	
Isotype: IgG	MW calculé: 190 aa, 20 kDa	
Immunogen Catalog Number: AG9400	MW observés: 20 kDa	

Applications

Applications testées: WB, ELISA	Contrôles positifs: WB : cellules HEK-293, cellules HeLa, cellules Jurkat
Spécificité de l'espèce: Humain	

Informations générales

Hematological and neurological expressed 1-like protein (HN1L), also known as Jupiter microtubule-associated homolog 2 (JPT2), belongs to the jupiter family. HN1L is nicotinic acid adenine dinucleotide phosphate (NAADP) binding protein required for NAADP-evoked intracellular calcium release (PubMed:33758061). HN1L enables NAADP to activate Ca²⁺ release from the endoplasmic reticulum through ryanodine receptors (PubMed:33758062). HN1L was also required for the translocation of a severe acute respiratory syndrome coronavirus 2 (SARS-CoV-2) pseudovirus through the endolysosomal system HN1L is expressed in liver, kidney, prostate, testis and uterus (PMID: 15094197).

Stockage

Stockage:
Stocker à -20°C. Stable pendant un an après l'expédition.
Tampon de stockage:
PBS avec azoture de sodium à 0,02 % et glycérol à 50 % pH 7,3
L'aliquotage n'est pas nécessaire pour le stockage à -20C

***** Les 20ul contiennent 0,1% de BSA.**

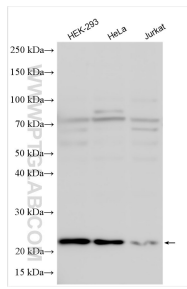
For technical support and original validation data for this product please contact:

T: 1 (888) 4PTGLAB (1-888-478-4522) (toll free in USA), or 1(312) 455-8498 (outside USA)

E: proteintech@ptglab.com
W: ptglab.com

This product is exclusively available under Proteintech Group brand and is not available to purchase from any other manufacturer.

Données de validation sélectionnées



Various lysates were subjected to SDS PAGE followed by western blot with 16285-1-AP (HN1L antibody) at dilution of 1:1000 incubated at room temperature for 1.5 hours.