

À des fins de recherche uniquement

# Anticorps Polyclonal de lapin anti-MYC tag



Numéro de catalogue: 16286-1-AP

248 Publications

## Informations de base

Numéro de catalogue:

16286-1-AP

Taille:

150ul, Concentration: 1500 µg/ml by Nanodrop;

Hôte:

Lapin

Isotype:

IgG

Immunogen Catalog Number:

AG9409

Numéro d'acquisition GenBank:

Identification du gène (NCBI):

Nom complet:

Méthode de purification:

Purification par affinité contre l'antigène

Dilutions recommandées:

WB 1:1000-1:8000

IP 0.5-4.0 ug for IP and 1:500-1:2000 for WB

IF 1:200-1:800

## Applications

Applications testées:

IF, IP, WB, ELISA

Demandes citées:

CoIP, FC, IF, IHC, IP, WB

Spécificité de l'espèce:

Protéine recombinante

Espèces citées:

Humain, poulet, souris

Contrôles positifs:

WB : protéine protéine recombinante, Protéine recombinante

IP : cellules HEK-293 transfectées,

IF : cellules HEK-293 transfectées, cellules MCF-7

## Informations générales

The myc-tag is a short synthetic polypeptide sequence derived from c-MYC protein that can be added to recombinant proteins to enable isolation and study when an antibody is not available. This antibody recognizes the MYC tag EQKLISEEDL. MYC tag is a part of c-MYC protein. So there's weaker 62-65 kDa bands for endogenous c-MYC protein. What is the molecular weight of myc? 1203Da: the ten amino acid myc tag sequence is EQKLISEEDL (in single letter code). What are the applications for myc tag? The addition of the myc tag to a particular protein can be useful when an antibody is not available to the protein of interest. Using recombinant DNA technology, the myc tag can be fused to the protein and then an antibody against the myc tag can be used to probe (PMID: 24490106). This is a reliable method and can be used in a number of different techniques, including purification using chromatography, tracking the protein in localization studies using immunofluorescence, or quantifying levels using Western Blot (PMID: 24490106). What is the structure of myc tag? The c-myc gene from which this tag is derived has a molecular weight of 49kDa, but the myc tag represents only a small portion of the C-terminus of this gene. The short polypeptide sequence can be fused to the N-terminus or the C-terminus of any protein without influencing function, although it is advised to avoid fusing it to a secretory signal. A cleavage site behind this tag is also sometimes engineered to allow removal with a specific protease.

## Publications notables

Autrice	Pubmed ID	Journal	Application
Pengcheng Ma	36179027	Sci Adv	WB
Ningning Yao	28966017	Structure	IF
Fengxia Zhang	36153541	Cell Div	WB

## Stockage

Stockage:

Stocker à -20°C. Stable pendant un an après l'expédition.

Tampon de stockage:

PBS avec azoture de sodium à 0,02 % et glycérol à 50 % pH 7,3

L'aliquotage n'est pas nécessaire pour le stockage à -20C

\*\*\* Les 20ul contiennent 0,1% de BSA.

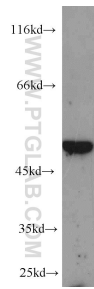
For technical support and original validation data for this product please contact:

T: 1 (888) 4PTGLAB (1-888-478-4522) (toll free in USA), or 1(312) 455-8498 (outside USA)

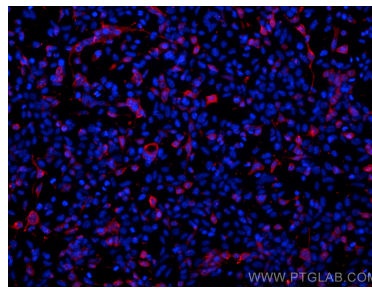
E: proteintech@ptglab.com  
W: ptglab.com

This product is exclusively available under Proteintech Group brand and is not available to purchase from any other manufacturer.

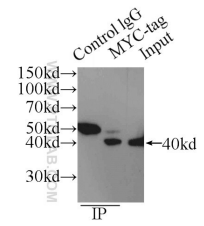
## Données de validation sélectionnées



Recombinant protein were subjected to SDS PAGE followed by western blot with 16286-1-AP (MYC-tag antibody) at dilution of 1:4000 incubated at room temperature for 1.5 hours.



Immunofluorescent analysis of (-20°C Ethanol) fixed Transfected HEK-293 cells using MYC tag antibody (16286-1-AP) at dilution of 1:400 and CoraLite®488-Conjugated AffiniPure Goat Anti-Rabbit IgG(H+L).



IP Result of anti-MYC-tag (IP:16286-1-AP, 4ug; Detection:16286-1-AP 1:1000) with Transfected HEK-293 cells lysate 300ug.