

À des fins de recherche uniquement

Anticorps Polyclonal de lapin anti-AP4B1



Numéro de catalogue: 16313-1-AP

Informations de base

Numéro de catalogue:

16313-1-AP

Taille:

150ul, Concentration: 200 µg/ml by Nanodrop;

Hôte:

Lapin

Isotype:

IgG

Immunogen Catalog Number:

AG9348

Numéro d'acquisition GenBank:

BC014146

Identification du gène (NCBI):

10717

Nom complet:

adaptor-related protein complex 4, beta 1 subunit

MW calculé

739 aa, 83 kDa

MW observés:

80-83 kDa

Méthode de purification:

Purification par affinité contre l'antigène

Dilutions recommandées:

WB 1:500-1:1000

IP 0.5-4.0 ug for IP and 1:200-1:1000 for WB

Applications

Applications testées:

IP, WB, ELISA

Spécificité de l'espèce:

Humain

Contrôles positifs:

WB : cellules HeLa, cellules MCF-7, cellules MDA-MB-231, cellules MDA-MB-453s

IP : cellules HeLa,

Informations générales

Adaptor protein (AP) complex is a component of intracellular protein transport. The AP4 complex is involved in sorting transmembrane cargo proteins into transport vesicles for trans-Golgi network export. AP4B1 is a member of the AP4 complex, which also includes AP4E1, AP4M1 and AP4S1. Loss-of-function variants in any of these four members can lead to AP-4-associated hereditary spastic paraplegia (HSP), a neurodegenerative disorder (PMID: 30543385). This antibody recognizes AP4B1.

Stockage

Stockage:

Stocker à -20°C. Stable pendant un an après l'expédition.

Tampon de stockage:

PBS avec azoture de sodium à 0,02 % et glycérol à 50 % pH 7,3

L'aliquotage n'est pas nécessaire pour le stockage à -20C

*** Les 20ul contiennent 0,1% de BSA.

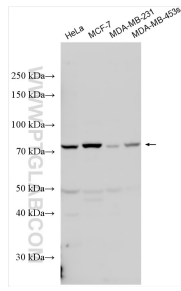
For technical support and original validation data for this product please contact:

T: 1 (888) 4PTGLAB (1-888-478-4522) (toll free in USA), or 1(312) 455-8498 (outside USA)

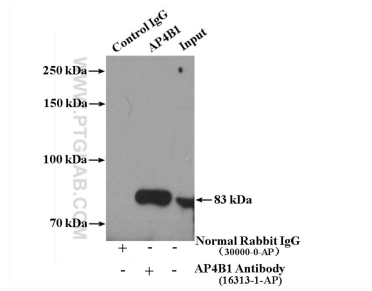
E: proteintech@ptglab.com
W: ptglab.com

This product is exclusively available under Proteintech Group brand and is not available to purchase from any other manufacturer.

Données de validation sélectionnées



Various lysates were subjected to SDS PAGE followed by western blot with 16313-1-AP (AP4B1 antibody) at dilution of 1:500 incubated at room temperature for 1.5 hours.



IP Result of anti-AP4B1 (IP:16313-1-AP, 4ug; Detection:16313-1-AP 1:300) with HeLa cells lysate 3200ug.