

À des fins de recherche uniquement

Anticorps Polyclonal de lapin anti-CXCL2



Numéro de catalogue: 16325-1-AP

2 Publications

Informations de base

Numéro de catalogue:
16325-1-AP

Taille:
150ul, Concentration: 180 µg/ml by Nanodrop and 187 µg/ml by Bradford method using BSA as the standard;

Hôte:
Lapin

Isotype:
IgG

Immunogen Catalog Number:
AG9410

Numéro d'acquisition GenBank:
BC015753

Identification du gène (NCBI):
2920

Nom complet:
chemokine (C-X-C motif) ligand 2

MW calculé
107 aa, 11 kDa

MW observés:
9 kDa

Méthode de purification:
Purification par affinité contre l'antigène

Dilutions recommandées:
WB 1:2000-1:8000

Applications

Applications testées:
WB, ELISA

Demandes citées:
IHC

Spécificité de l'espèce:
Humain

Espèces citées:
Humain, souris

Contrôles positifs:

WB : tissu pulmonaire humain,

Informations générales

CXCL2, also known as macrophage inflammatory protein 2-alpha (MIP2-alpha), is a member of CXC chemokine family that binds to CXC chemokine receptor 2 (CXCR2). CXCL2 is mainly produced by macrophages, endothelial cells, epithelial cells and tumor cells. CXCL2 plays important roles in various biological progresses such as angiogenesis, inflammation, immune response and cancer biological behaviors. Under inflammatory conditions in CNS, microglia and astrocytes may secrete CXCL2 as well as other chemokines, which induces chemotaxis and infiltration of circulatory neutrophils. Indeed, previous studies suggest that CXCL2 is involved in Alzheimer disease, multiple sclerosis and brain ischemia.

Publications notables

| Autrice | Pubmed ID | Journal | Application |
|-------------|-----------|-------------------|-------------|
| Xu Zhou | 35908353 | Bioorg Chem | IHC |
| Xiaoyan Wan | 35117418 | Transl Cancer Res | IHC |

Stockage

Stockage:

Stocker à -20°C. Stable pendant un an après l'expédition.

Tampon de stockage:

PBS avec azoture de sodium à 0,02 % et glycérol à 50 % pH 7,3

L'aliquotage n'est pas nécessaire pour le stockage à -20C

*** Les 20ul contiennent 0,1% de BSA.

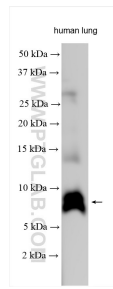
For technical support and original validation data for this product please contact:

T: 1 (888) 4PTGLAB (1-888-478-4522) (toll free in USA), or 1(312) 455-8498 (outside USA)

E: proteintech@ptglab.com
W: ptglab.com

This product is exclusively available under Proteintech Group brand and is not available to purchase from any other manufacturer.

Données de validation sélectionnées



Human lung tissue was subjected to SDS PAGE followed by western blot with 16325-1-AP (CXCL2 antibody) at dilution of 1:6000 incubated at room temperature for 1.5 hours.