

À des fins de recherche uniquement

Anticorps Polyclonal de lapin anti-FZR1/Cdh1



Numéro de catalogue: 16368-1-AP

Phare

7 Publications

Informations de base

Numéro de catalogue:
16368-1-AP

Taille:
150ul, Concentration: 500 µg/ml by Nanodrop and 220 µg/ml by Bradford method using BSA as the standard;

Hôte:
Lapin

Isotype:
IgG

Immunogen Catalog Number:
AG9201

Numéro d'acquisition GenBank:
BC013413

Identification du gène (NCBI):
51343

Nom complet:
fizzy/cell division cycle 20 related 1 (Drosophila)

MW calculé:
493 aa, 55 kDa

MW observés:
55 kDa

Méthode de purification:
Purification par affinité contre l'antigène

Dilutions recommandées:
WB 1:500-1:2000
IP 0.5-4.0 µg for IP and 1:500-1:1000 for WB
IHC 1:50-1:500
IF 1:50-1:500

Applications

Applications testées:
FC, IF, IHC, IP, WB, ELISA

Demandes citées:
FC, IP, WB

Spécificité de l'espèce:
Humain, rat, souris

Espèces citées:
Humain, souris

Remarque-IHC: il est suggéré de démasquer l'antigène avec un tampon de TE buffer pH 9,0; (*) A défaut, 'le démasquage de l'antigène peut être 'effectué avec un tampon citrate pH 6,0.

Contrôles positifs:

WB : cellules HeLa, cellules C6, cellules HepG2, cellules Jurkat, cellules NIH/3T3, tissu cardiaque de souris, tissu hépatique de souris

IP : tissu cardiaque de souris,

IHC : tissu hépatique humain, tissu de cancer du sein humain

IF : cellules HepG2, cellules HeLa

Informations générales

FZR1 gene, also named as FYR, FZR and KIAA1242, has been previously shown to be mutated in lobular breast carcinomas. Direct evidence of FZR1 mutations triggering tumorigenesis has been investigated. FZR1 is a key regulator of ligase activity of the anaphase promoting complex/ cyclosome (APC/C) which is playing vital roles in cell cycle progression. There are 7 WD-repeat domains in FZR1. Upon phosphorylation and dephosphorylation, it interacts with other components to modulate cell mitosis. This gene is different to E-cadherin (CDH1) which is an epithelial cell adhesion molecule. It has 55 kDa, 54 kDa and 45 kDa isoforms.

Publications notables

Autrice	Pubmed ID	Journal	Application
Changyin Zhou	34559563	Sci Adv	WB
Marie-Claude Perry	25246633	Mol Cell Biol	WB
Arielle N Valdez-Sinon	32434143	iScience	IP,WB

Stockage

Stockage:
Stocker à -20°C. Stable pendant un an après l'expédition.

Tampon de stockage:
PBS avec azoture de sodium à 0,02 % et glycérol à 50 % pH 7,3
L'aliquotage n'est pas nécessaire pour le stockage à -20C

*** Les 20ul contiennent 0,1% de BSA.

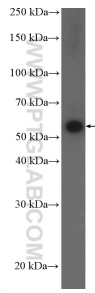
For technical support and original validation data for this product please contact:

T: 1 (888) 4PTGLAB (1-888-478-4522) (toll free in USA), or 1(312) 455-8498 (outside USA)

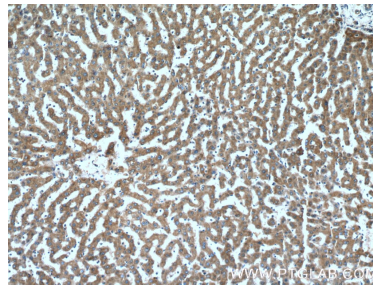
E: proteintech@ptglab.com
W: ptglab.com

This product is exclusively available under Proteintech Group brand and is not available to purchase from any other manufacturer.

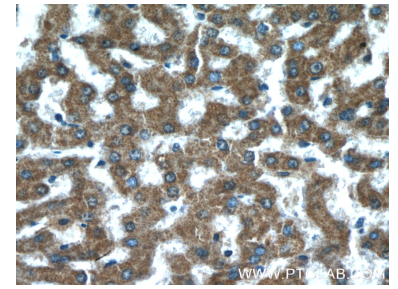
Données de validation sélectionnées



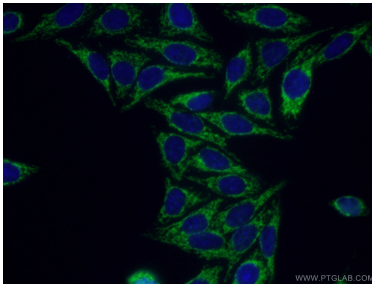
HeLa cells were subjected to SDS PAGE followed by western blot with 16368-1-AP (FZR1 Antibody) at dilution of 1:1000 incubated at room temperature for 1.5 hours.



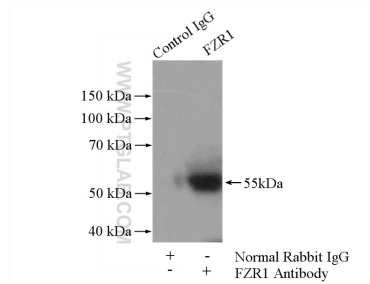
Immunohistochemical analysis of paraffin-embedded human liver tissue slide using 16368-1-AP (FZR1 antibody) at dilution of 1:200 (under 10x lens).



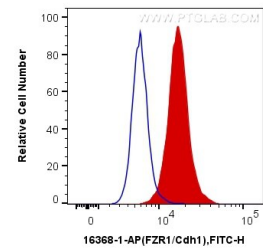
Immunohistochemical analysis of paraffin-embedded human liver tissue slide using 16368-1-AP (FZR1 antibody) at dilution of 1:200 (under 40x lens).



Immunofluorescent analysis of (-20°C Ethanol) fixed HepG2 cells using 16368-1-AP (FZR1 antibody) at dilution of 1:50 and Alexa Fluor 488-conjugated AffiniPure Goat Anti-Rabbit IgG(H+L).



IP Result of anti-FZR1 (IP:16368-1-AP, 4ug; Detection:16368-1-AP 1:500) with mouse heart tissue lysate 3200ug.



1×10^6 HeLa cells were intracellularly stained with 0.2 ug Anti-Human FZR1/Cdh1 (16368-1-AP) and CoraLite®488-Conjugated AffiniPure Goat Anti-Rabbit IgG(H+L) at dilution 1:1000 (red), or 0.2 ug Control Antibody. Cells were fixed with 4% PFA and permeabilized with Flow Cytometry Perm Buffer (PF00011-C).