

À des fins de recherche uniquement

Anticorps Polyclonal de lapin anti-Alpha 1 Antitrypsin



Numéro de catalogue: 16382-1-AP

20 Publications

Informations de base

Numéro de catalogue:

16382-1-AP

Taille:

150ul, Concentration: 600 µg/ml by Nanodrop and 480 µg/ml by Bradford method using BSA as the standard;

Hôte:

Lapin

Isotype:

IgG

Immunogen Catalog Number:

AG9369

Numéro d'acquisition GenBank:

BC015642

Identification du gène (NCBI):

5265

Nom complet:

serpin peptidase inhibitor, clade A (alpha-1 antiproteinase, antitrypsin), member 1

MW calculé

418 aa, 47 kDa

MW observés:

47 kDa

Méthode de purification:

Purification par affinité contre l'antigène

Dilutions recommandées:

WB 1:2000-1:10000

IP 0.5-4.0 ug for IP and 1:500-1:2000 for WB

IHC 1:50-1:500

Applications

Applications testées:

FC, IHC, IP, WB, ELISA

Demandes citées:

IF, IHC, WB

Spécificité de l'espèce:

Humain, rat, souris

Espèces citées:

Humain, rat, souris

Remarque-IHC: il est suggéré de démasquer l'antigène avec un tampon de TE buffer pH 9,0; (*) A défaut, le démasquage de l'antigène peut être effectué avec un tampon citrate pH 6,0.

Contrôles positifs:

WB : tissu salivaire humain, échantillon d'urine humaine, tissu cutané de souris, tissu hépatique de souris, tissu pulmonaire de souris, tissu rénal de souris, tissu rénal humain

IP : tissu rénal de souris,

IHC : tissu de cancer du foie humain, tissu de cirrhose hépatique humaine, tissu hépatique de souris

Informations générales

SERPINA1 is the gene for a protein called alpha-1-antitrypsin (AAT), which is a serine protease inhibitor whose targets include elastase, plasmin, thrombin, trypsin, chymotrypsin, and plasminogen activator. AAT is a glycoprotein synthesized primarily by hepatocytes, with smaller amount synthesized by intestinal epithelial cells, neutrophils, pulmonary alveolar cells and macrophages. AAT is the most abundant, endogenous serine protease inhibitor in blood circulation and it has been implicated in regulating vital fluid phase biological events such as blood coagulation, fibrinolysis, complement activation, apoptosis, reproduction, tumor progression and inflammatory response. The primary function of AAT is thought to be the inactivation of neutrophil elastase and other endogenous serine proteases. Defects in SERPINA1 can cause emphysema or liver disease.

Publications notables

Autrice	Pubmed ID	Journal	Application
Mehrpouya B Mobin	27665711	Nat Commun	WB
Eman Khatib-Massalha	29046295	Am J Physiol Renal Physiol	WB
Jifeng Yang	36228974	J Nutr Biochem	WB

Stockage

Stockage:

Stocker à -20°C. Stable pendant un an après l'expédition.

Tampon de stockage:

PBS avec azoture de sodium à 0,02 % et glycérol à 50 % pH 7,3

L'aliquotage n'est pas nécessaire pour le stockage à -20C

*** Les 20ul contiennent 0,1% de BSA.

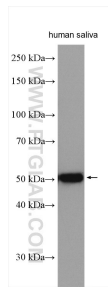
For technical support and original validation data for this product please contact:

T: 1 (888) 4PTGLAB (1-888-478-4522) (toll free in USA), or 1(312) 455-8498 (outside USA)

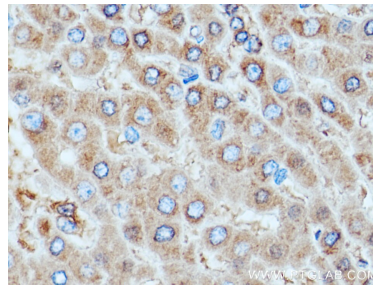
E: proteintech@ptglab.com
W: ptglab.com

This product is exclusively available under Proteintech Group brand and is not available to purchase from any other manufacturer.

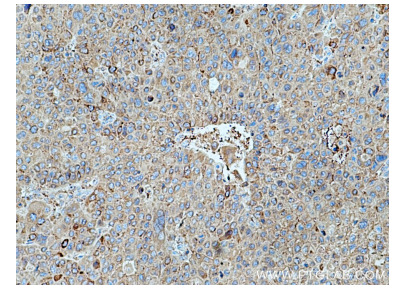
Données de validation sélectionnées



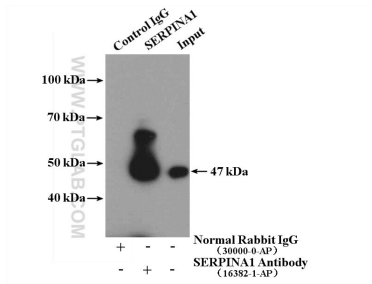
human saliva tissue were subjected to SDS PAGE followed by western blot with 16382-1-AP (Alpha-1-Antitrypsin antibody) at dilution of 1:8000 incubated at room temperature for 1.5 hours.



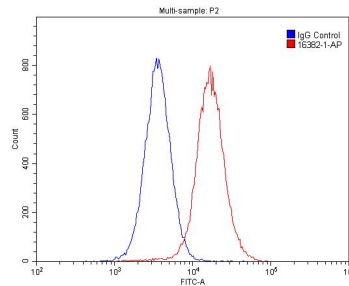
Immunohistochemical analysis of paraffin-embedded human liver cancer tissue slide using 16382-1-AP (Alpha-1-Antitrypsin antibody) at dilution of 1:200 (under 40x lens). Heat mediated antigen retrieval with Tris-EDTA buffer (pH 9.0).



Immunohistochemical analysis of paraffin-embedded human liver cancer tissue slide using 16382-1-AP (Alpha-1-Antitrypsin antibody) at dilution of 1:200 (under 10x lens). Heat mediated antigen retrieval with Tris-EDTA buffer (pH 9.0).



IP Result of anti-Alpha-1-Antitrypsin (IP:16382-1-AP, 4ug; Detection:16382-1-AP 1:1000) with mouse kidney tissue lysate 7200ug.



1x10⁶ HepG2 cells were stained with 0.2ug Alpha-1-Antitrypsin antibody (16382-1-AP, red) and control antibody (blue). Cells were fixed with 4% PFA and permeabilized with 0.1% Triton X-100. Alexa Fluor 488-conjugated AffiniPure Goat Anti-Rabbit IgG(H+L) with dilution 1:1500.