

À des fins de recherche uniquement

# Anticorps Polyclonal de lapin anti-NRF2, NFE2L2



Numéro de catalogue: 16396-1-AP

Phare

1243 Publications

## Informations de base

Numéro de catalogue:  
16396-1-AP

Taille:  
150ul, Concentration: 700 µg/ml by  
Nanodrop;

Hôte:  
Lapin

Isotype:  
IgG

Immunogen Catalog Number:  
AG9489

Numéro d'acquisition GenBank:  
BC011558

Identification du gène (NCBI):  
4780

Nom complet:  
nuclear factor (erythroid-derived 2)-  
like 2

MW calculé  
605 aa, 68 kDa

MW observés:  
110 kDa, 68 kDa

Méthode de purification:  
Purification par affinité contre  
l'antigène

Dilutions recommandées:  
WB 1:2000-1:12000  
IP 0.5-4.0 ug for IP and 1:200-1:1000  
for WB  
IHC 1:50-1:500  
IF 1:50-1:500

## Applications

Applications testées:  
FC, IF, IHC, IP, WB, ELISA

Demandes citées:  
ChIP, CoIP, IF, IHC, IP, WB

Spécificité de l'espèce:  
Humain, rat, souris

Espèces citées:  
Chèvre, Humain, Lapin, poulet, rat, singe, souris

**Remarque-IHC: il est suggéré de démasquer l'antigène avec un tampon de TE buffer pH 9.0; (\*) À défaut, 'le démasquage de l'antigène peut être 'effectué avec un tampon citrate pH 6.0.**

Contrôles positifs:

WB : cellules HepG2, cellules A549, cellules HeLa traitées au DMSO

IP : tissu rénal de souris,

IHC : tissu de cancer du foie humain, tissu de cancer du côlon humain, tissu de cancer du sein humain, tissu de carcinome à cellules rénales humain, tissu rénal humain

IF : tissu cérébral de souris, cellules HepG2

## Informations générales

NRF2, also named as NFE2L2, belongs to the bZIP family and CNC subfamily. It is a transcription activator that binds to antioxidant response (ARE) elements in the promoter regions of target genes. NRF2 is important for the coordinated up-regulation of genes in response to oxidative stress. It may be involved in the transcriptional activation of genes of the beta-globin cluster by mediating enhancer activity of hypersensitive site 2 of the beta-globin locus control region. Nrf2 is a key player in the regulation of genes encoding for many antioxidative response enzymes. The expression of NRF2 may be induced under oxidative stress (PMID:14567983). In lung cancer, Nrf2 activation in malignant cells has been associated with tumor progression and chemotherapy resistance (PMID:20534738). Identifying patients with abnormal NRF2 expression may be important for selection for chemotherapy in NSCLC. As new investigators break into the emerging field of Nrf2 research, confusion regarding the correct migratory pattern of Nrf2 is causing doubts about the accuracy and reproducibility of published results. This letter provides solid evidence that the actually observed molecular weight of Nrf2 is about 70kDa and 95-110 kDa. (PMID: 22703241).

## Publications notables

Autrice	Pubmed ID	Journal	Application
Lin-Tao Xu	34601084	J Ethnopharmacol	WB
Noha A. Gouda	36290663	Antioxi dants (Basel)	WB
Zhenmao Jia	36238566	Front Pharmacol	WB,IF

## Stockage

Stockage:

Stocker à -20°C. Stable pendant un an après l'expédition.

Tampon de stockage:

PBS avec azoture de sodium à 0,02 % et glycérol à 50 % pH 7,3

L'aliquoteage n'est pas nécessaire pour le stockage à -20C

\*\*\* Les 20ul contiennent 0,1% de BSA.

For technical support and original validation data for this product please contact:

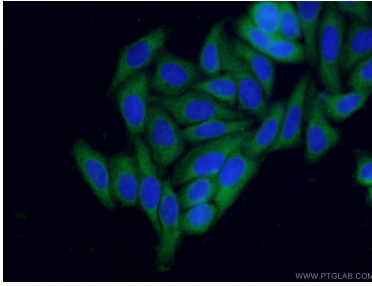
T: 1 (888) 4PTGLAB (1-888-478-4522) (toll free in USA), or 1(312) 455-8498 (outside USA)

E: proteintech@ptglab.com

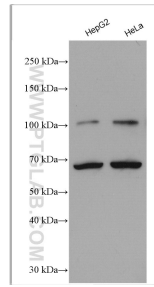
W: ptglab.com

This product is exclusively available under Proteintech Group brand and is not available to purchase from any other manufacturer.

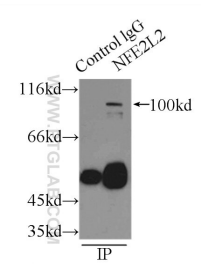
## Données de validation sélectionnées



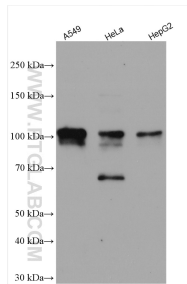
Immunofluorescent analysis of (-20°C Ethanol) fixed HepG2 cells using 16396-1-AP (NRF2, NFE2L2 antibody) at dilution of 1:50 and CoraLite488-Conjugated AffiniPure Goat Anti-Rabbit IgG(H+L).



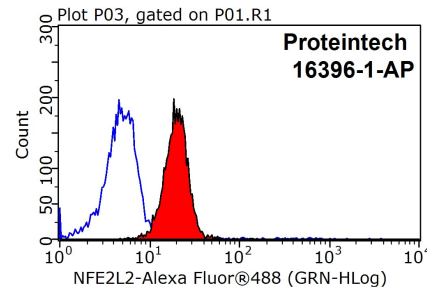
Various lysates were subjected to SDS PAGE followed by western blot with 16396-1-AP (NRF2, NFE2L2 antibody) at dilution of 1:6000 incubated at room temperature for 1.5 hours.



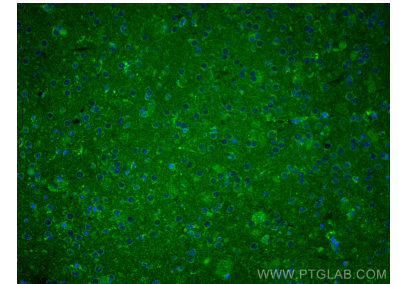
IP Result of anti-NRF2, NFE2L2 (IP:16396-1-AP, 3ug; Detection:16396-1-AP 1:300) with mouse kidney tissue lysate 4000ug.



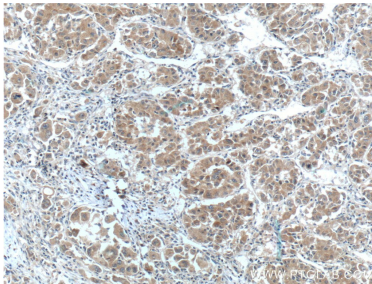
Various lysates were subjected to SDS PAGE followed by western blot with 16396-1-AP (NRF2, NFE2L2 antibody) at dilution of 1:10000 incubated at room temperature for 1.5 hours.



1X10<sup>6</sup> MCF-7 cells were stained with 0.2ug NRF2, NFE2L2 antibody (16396-1-AP, red) and control antibody (blue). Fixed with 90% MeOH blocked with 3% BSA (30 min). Alexa Fluor 488-conjugated AffiniPure Goat Anti-Rabbit IgG(H+L) with dilution 1:1500.



Immunofluorescent analysis of (4% PFA) fixed mouse brain tissue using NRF2, NFE2L2 antibody (16396-1-AP) at dilution of 1:200 and CoraLite@488-Conjugated AffiniPure Goat Anti-Rabbit IgG(H+L).



Immunohistochemical analysis of paraffin-embedded human liver cancer tissue slide using 16396-1-AP (NRF2, NFE2L2 Antibody) at dilution of 1:200 (under 10x lens). Heat mediated antigen retrieval with Tris-EDTA buffer (pH 9.0).