

À des fins de recherche uniquement

Anticorps Polyclonal de lapin anti-BCAT2



Numéro de catalogue: 16417-1-AP

Phare

16 Publications

Informations de base

Numéro de catalogue: 16417-1-AP	Numéro d'acquisition GenBank: BC001900	Méthode de purification: Purification par affinité contre l'antigène
Taille: 150ul , Concentration: 267 µg/ml by Nanodrop;	Identification du gène (NCBI): 587	Dilutions recommandées: WB 1:500-1:2000 IHC 1:20-1:200
Hôte: Lapin	Nom complet: branched chain aminotransferase 2, mitochondrial	
Isotype: IgG	MW calculé: 44 kDa	
Immunogen Catalog Number: AG9573	MW observés: 38-42 kDa	

Applications

Applications testées:

FC, IHC, WB, ELISA

Demandes citées:

IF, IHC, WB

Spécificité de l'espèce:

Humain

Espèces citées:

Humain, rat, souris

Contrôles positifs:

WB : cellules HepG2, cellules Jurkat, cellules L02, cellules MCF-7, cellules Raji

IHC : tissu cutané humain, tissu placentaire humain

Remarque-IHC: il est suggéré de démasquer l'antigène avec un tampon de TE buffer pH 9,0; (*) À défaut, le démasquage de l'antigène peut être effectué avec un tampon citrate pH 6,0.

Informations générales

Branched-chain amino acid transaminase 2 (BCAT2) is an important enzyme in branched-chain amino acids (BCAAs) catabolism that reversibly catalyzes the initial step of BCAA degradation to branched-chain acyl-CoA. In humans, BCAT2 encodes a mitochondrial protein that is ubiquitously expressed in all organs (except hepatocytes) (PMID:32467562). Moreover, other reports showed that overexpressed BCAT2 in pancreatic ductal adenocarcinoma (PDAC) cells enhanced cell proliferation and survival in vitro and in vivo (PMID:35663242).

Publications notables

Autrice	Pubmed ID	Journal	Application
Yukari Shida	34845278	Sci Rep	WB
Dongdong Yang	36417878	Cell Rep	WB
Yang Yang	34084135	Front Pharmacol	WB

Stockage

Stockage:

Stocker à -20°C. Stable pendant un an après l'expédition.

Tampon de stockage:

PBS avec azoture de sodium à 0,02 % et glycérol à 50 % pH 7,3

L'aliquotage n'est pas nécessaire pour le stockage à -20C

***** Les 20ul contiennent 0,1% de BSA.**

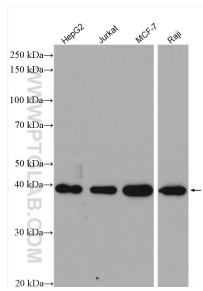
For technical support and original validation data for this product please contact:

T: 1 (888) 4PTGLAB (1-888-478-4522) (toll free in USA), or 1(312) 455-8498 (outside USA)

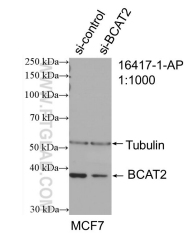
E: proteintech@ptglab.com
W: ptglab.com

This product is exclusively available under Proteintech Group brand and is not available to purchase from any other manufacturer.

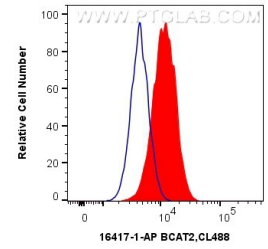
Données de validation sélectionnées



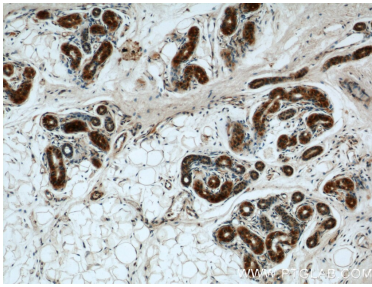
Various lysates were subjected to SDS PAGE followed by western blot with 16417-1-AP (BCAT2 antibody) at dilution of 1:1000 incubated at room temperature for 1.5 hours.



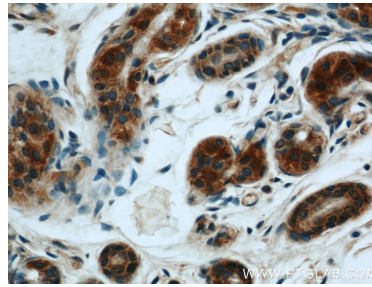
WB result of BCAT2 antibody (16417-1-AP; 1:1000; incubated at room temperature for 1.5 hours) with sh-Control and sh-BCAT2 transfected MCF-7 cells.



1X10⁶ HepG2 cells were intracellularly stained with 0.8 ug Anti-Human BCAT2 (16417-1-AP) and CoraLite@488-Conjugated AffiniPure Goat Anti-Rabbit IgG(H+L) at dilution 1:1000 (red), or 0.8 ug Isotype Control. Cells were fixed with 4% PFA and permeabilized with Flow Cytometry Perm Buffer (PF00011-C).



Immunohistochemical analysis of paraffin-embedded human skin using 16417-1-AP (BCAT2 antibody) at dilution of 1:50 (under 10x lens).



Immunohistochemical analysis of paraffin-embedded human skin using 16417-1-AP (BCAT2 antibody) at dilution of 1:50 (under 40x lens).