

À des fins de recherche uniquement

# Anticorps Polyclonal de lapin anti-NELFB



Numéro de catalogue: 16418-1-AP

Phare

4 Publications

## Informations de base

Numéro de catalogue:  
16418-1-AP

Taille:  
150ul, Concentration: 500 µg/ml by Nanodrop and 340 µg/ml by Bradford method using BSA as the standard;

Hôte:  
Lapin

Isotype:  
IgG

Immunogen Catalog Number:  
AG9599

Numéro d'acquisition GenBank:  
BC011892

Identification du gène (NCBI):  
25920

Nom complet:  
cofactor of BRCA1

MW calculé  
580aa,66 kDa; 475aa,54 kDa

MW observés:  
66 kDa

Méthode de purification:  
Purification par affinité contre l'antigène

Dilutions recommandées:  
WB 1:1000-1:6000  
IP 0.5-4.0 ug for IP and 1:500-1:1000 for WB  
IF 1:10-1:100

## Applications

Applications testées:  
IF, IP, WB, ELISA

Demandes citées:  
IF, IHC, WB

Spécificité de l'espèce:  
Humain, rat, souris

Espèces citées:  
Humain, souris

Contrôles positifs:

WB : cellules BxPC-3, cellules HeLa, cellules HepG2, cellules MCF-7, tissu cérébral de rat

IP : tissu cérébral de souris,

IF : cellules BxPC-3,

## Informations générales

Cofactor of BRCA1 (COBRA1) was first identified as a BRCA1-interacting protein and subsequently found to be the B subunit of the negative elongation factor complex (NELF-B). Cobra1 is essential for early embryogenesis (PMID: 19340312). The MW of this protein is 66 kDa, and this antibody specially recognises the 66 kDa protein.

## Publications notables

Autrice	Pubmed ID	Journal	Application
Bofeng Liu	33116310	Nature	IF
Alessia Curina	28275002	Genes Dev	WB
Seina Ohe	36463234	Nat Commun	WB

## Stockage

Stockage:

Stocker à -20°C. Stable pendant un an après l'expédition.

Tampon de stockage:

PBS avec azoture de sodium à 0,02 % et glycérol à 50 % pH 7,3

L'aliquotage n'est pas nécessaire pour le stockage à -20C

\*\*\* Les 20ul contiennent 0,1% de BSA.

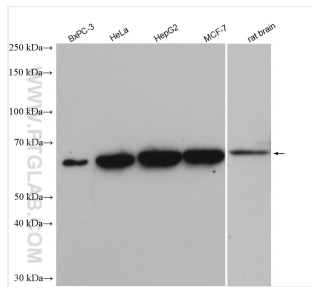
For technical support and original validation data for this product please contact:

T: 1 (888) 4PTGLAB (1-888-478-4522) (toll free in USA), or 1(312) 455-8498 (outside USA)

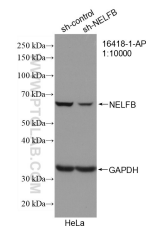
E: proteintech@ptglab.com  
W: ptglab.com

This product is exclusively available under Proteintech Group brand and is not available to purchase from any other manufacturer.

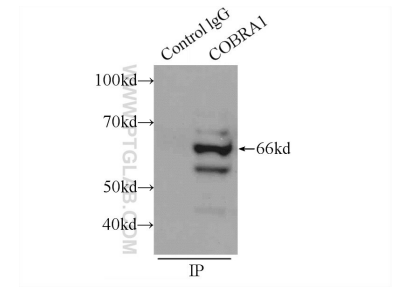
## Données de validation sélectionnées



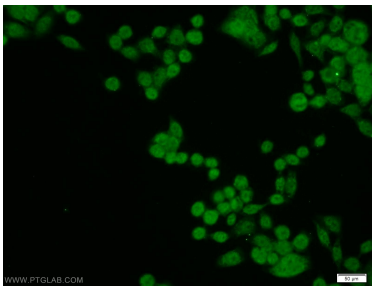
Various lysates were subjected to SDS PAGE followed by western blot with 16418-1-AP (NELFB antibody) at dilution of 1:3000 incubated at room temperature for 1.5 hours.



WB result of NELFB antibody (16418-1-AP; 1:10000; incubated at room temperature for 1.5 hours) with sh-Control and sh-NELFB transfected HeLa cells.



IP Result of anti-NELFB (IP:16418-1-AP, 3ug; Detection:16418-1-AP 1:500) with mouse brain tissue lysate 6000ug.



Immunofluorescent analysis of BxPC-3 cells using 16418-1-AP (NELFB antibody) at dilution of 1:25 and Alexa Fluor 488-conjugated AffiniPure Goat Anti-Rabbit IgG(H+L).