

À des fins de recherche uniquement

# Anticorps Polyclonal de lapin anti-FUCA1



Numéro de catalogue: 16420-1-AP

6 Publications

## Informations de base

Numéro de catalogue:

16420-1-AP

Taille:

150ul, Concentration: 350 µg/ml by Nanodrop and 333 µg/ml by Bradford method using BSA as the standard;

Hôte:

Lapin

Isotype:

IgG

Immunogen Catalog Number:

AG9612

Numéro d'acquisition GenBank:

BC017338

Identification du gène (NCBI):

2517

Nom complet:

fucosidase, alpha-L-1, tissue

MW calculé

461 aa, 53 kDa

MW observés:

50-56 kDa

Méthode de purification:

Purification par affinité contre l'antigène

Dilutions recommandées:

WB 1:500-1:1000

IHC 1:50-1:500

## Applications

Applications testées:

IHC, WB, ELISA

Demandes citées:

IHC, WB

Spécificité de l'espèce:

Humain, rat, souris

Espèces citées:

Humain

**Remarque-IHC: il est suggéré de démasquer l'antigène avec un tampon de TE buffer pH 9,0; (\*) A défaut, 'le démasquage de l'antigène peut être 'effectué avec un tampon citrate pH 6,0.**

Contrôles positifs:

WB : tissu hépatique de souris, cellules COLO 320

IHC : tissu testiculaire humain, tissu de cancer du foie humain

## Informations générales

FUCA1(α-L-Fucosidase) is a lysosomal glycosidase which is ubiquitous in eukaryotic cells. This enzyme is usually found as a soluble component of the lysosome and functions as an acid hydrolase in the degradation of numerous and diverse fucoglycoconjugates. The mammalian α-L-fucosidases are relatively large, multisubunit glycoproteins which exist in multiple molecular isoforms. This enzyme may have a role in sperm-egg interactions in the reproductive tract of the female rat. There is a precursor 54 kDa form of rat sperm fucosidase which is processed to a mature 52 kDa form of the enzyme (PMID:8836125). This protein from rat epididymis is a tetramer of 210-220 kDa, made up by two pairs of subunits of 47 and 60 kDa, and the one from human seminal plasma exists in different oligomeric forms, that is, as a dimer, as a tetramer, and as a hexamer made up of a single subunit of 56-57 kDa (PMID:16736526).

## Publications notables

Autrice	Pubmed ID	Journal	Application
Giancarlo Vecchio	28404918	Oncotarget	WB, IHC
Serena Bonin	29632639	Oncotarget	WB, IHC
Shoko Ishida	30729618	Pathol Int	IHC

## Stockage

Stockage:

Stocker à -20°C. Stable pendant un an après l'expédition.

Tampon de stockage:

PBS avec azoture de sodium à 0,02 % et glycérol à 50 % pH 7,3

L'aliquotage n'est pas nécessaire pour le stockage à -20C

\*\*\* Les 20ul contiennent 0,1% de BSA.

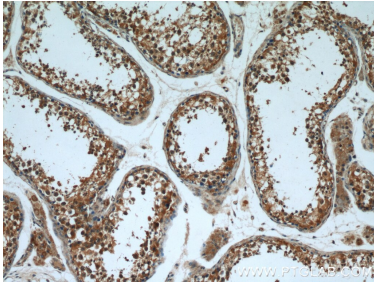
For technical support and original validation data for this product please contact:

T: 1 (888) 4PTGLAB (1-888-478-4522) (toll free in USA), or 1(312) 455-8498 (outside USA)

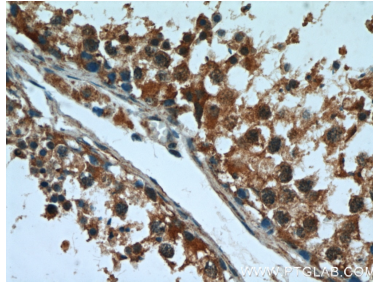
E: proteintech@ptglab.com  
W: ptglab.com

This product is exclusively available under Proteintech Group brand and is not available to purchase from any other manufacturer.

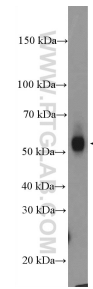
## Données de validation sélectionnées



Immunohistochemical analysis of paraffin-embedded human testis using 16420-1-AP (FUCA1 antibody) at dilution of 1:50 (under 10x lens).



Immunohistochemical analysis of paraffin-embedded human testis using 16420-1-AP (FUCA1 antibody) at dilution of 1:50 (under 40x lens).



mouse liver tissue were subjected to SDS PAGE followed by western blot with 16420-1-AP (FUCA1 Antibody) at dilution of 1:600 incubated at room temperature for 1.5 hours.