

À des fins de recherche uniquement

Anticorps Polyclonal de lapin anti-Carboxypeptidase M



Numéro de catalogue: 16440-1-AP

Informations de base

Numéro de catalogue:
16440-1-AP

Taille:
150ul , Concentration: 133 µg/ml by
Bradford method using BSA as the
standard;

Hôte:
Lapin

Isotype:
IgG

Immunogen Catalog Number:
AG9761

Numéro d'acquisition GenBank:
BC022276

Identification du gène (NCBI):
1368

Nom complet:
carboxypeptidase M

MW calculé
443 aa, 51 kDa

MW observés:
54 kDa

Méthode de purification:
Purification par affinité contre
l'antigène

Dilutions recommandées:
WB 1:500-1:1000

Applications

Applications testées:
WB, ELISA

Spécificité de l'espèce:
Humain, souris

Contrôles positifs:

WB : cellules HEK-293, tissu hépatique de souris

Informations générales

CPM (Carboxypeptidase M), a plasma membrane-bound enzyme, is present in many human organs and differs from other carboxypeptidases that cleave basic C-terminal amino acids (PMID:2394713). CPM is structurally, catalytically and immunologically distinct from other carboxypeptidases, and expressed on cell membranes in a glycosyl-phosphatidylinositol-anchored form and it can be a novel marker and cellular player in lipid uptake and/or metabolism of MAs by promoting foam cell formation (PMID:22157720). This full length protein has a signal peptide with 17 amino acid, a propeptide with 20 amino acid and five glycosylation sites.

Stockage

Stockage:

Stocker à -20°C. Stable pendant un an après l'expédition.

Tampon de stockage:

PBS avec azoture de sodium à 0,02 % et glycérol à 50 % pH 7,3

L'aliquotage n'est pas nécessaire pour le stockage à -20C

*** Les 20ul contiennent 0,1% de BSA.

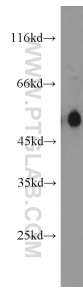
For technical support and original validation data for this product please contact:

T: 1 (888) 4PTGLAB (1-888-478-4522) (toll free
in USA), or 1(312) 455-8498 (outside USA)

E: proteintech@ptglab.com
W: ptglab.com

This product is exclusively available under Proteintech Group brand and is not available to purchase from any other manufacturer.

Données de validation sélectionnées



HEK-293 cells were subjected to SDS PAGE followed by western blot with 16440-1-AP (Carboxypeptidase M antibody) at dilution of 1:600 incubated at room temperature for 1.5 hours.