

À des fins de recherche uniquement

Anticorps Polyclonal de lapin anti-Caveolin-1



Numéro de catalogue: 16447-1-AP

Phare

76 Publications

Informations de base

Numéro de catalogue:
16447-1-AP

Taille:
150ul, Concentration: 650 µg/ml by Nanodrop and 333 µg/ml by Bradford method using BSA as the standard;

Hôte:
Lapin

Isotype:
IgG

Immunogen Catalog Number:
AG8049

Numéro d'acquisition GenBank:
BC006432

Identification du gène (NCBI):
857

Nom complet:
caveolin 1, caveolae protein, 22kDa

MW calculé
22 kDa

MW observés:
20-25 kDa

Méthode de purification:
Purification par affinité contre l'antigène

Dilutions recommandées:
WB 1:500-1:2000
IP 0.5-4.0 ug for IP and 1:500-1:1000 for WB
IHC 1:50-1:500

Applications

Applications testées:
IHC, IP, WB, ELISA

Demandes citées:
IF, IHC, IP, WB

Spécificité de l'espèce:
Humain, rat, souris

Espèces citées:
bovin, Humain, poisson-zèbre, rat, souris

Remarque-IHC: il est suggéré de démasquer l'antigène avec un tampon de TE buffer pH 9,0; (*) A défaut, le démasquage de l'antigène peut être effectué avec un tampon citrate pH 6,0.

Contrôles positifs:

WB: cellules A549, cellules HeLa, cellules NIH/3T3

IP: cellules A549,

IHC: tissu de cancer du sein humain, tissu cardiaque humain, tissu de cancer du poumon humain, tissu hépatique humain, tissu pulmonaire humain

Informations générales

Caveolin-1 (CAV1), a multifunctional protein, is the main constituent molecule of caveolae and represents a scaffolding molecule for several signaling molecules including epidermal growth factor receptor (PMID: 19641024). Several studies have implicated that a reduced expression of CAV1 was found in cancers including head and neck carcinoma (PMID: 19002186). However, other studies recognize CAV1 as a tumor promoter because CAV1 is overexpressed in various kinds of cancers, especially in oral cancer (PMID: 20558341). Recent study also show that CAV1 is involved in astric Cancer (PMID: 25339030). MW of Caveolin-1 is from 20-25 kDa due to phosphorylation (PMID: 10198051).

Publications notables

Autrice	Pubmed ID	Journal	Application
Li Wu	36184060	Vascul Pharmacol	WB, IF
Dali Zhao	34555268	FEBS Open Bio	WB
Denghui Wei	32958903	Cell Res	WB

Stockage

Stockage:

Stocker à -20°C. Stable pendant un an après l'expédition.

Tampon de stockage:

PBS avec azoture de sodium à 0,02 % et glycérol à 50 % pH 7,3

L'aliquotage n'est pas nécessaire pour le stockage à -20C

*** Les 20ul contiennent 0,1% de BSA.

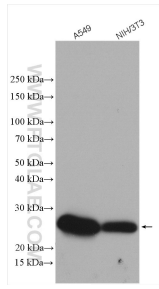
For technical support and original validation data for this product please contact:

T: 1 (888) 4PTGLAB (1-888-478-4522) (toll free in USA), or 1(312) 455-8498 (outside USA)

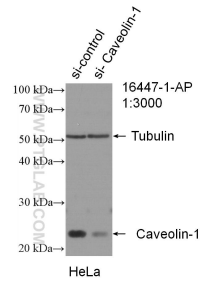
E: proteintech@ptglab.com
W: ptglab.com

This product is exclusively available under Proteintech Group brand and is not available to purchase from any other manufacturer.

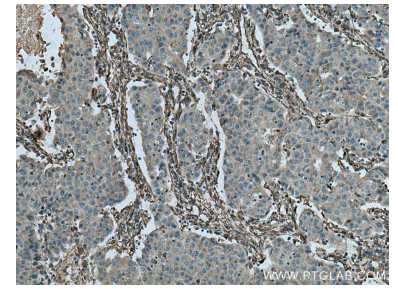
Données de validation sélectionnées



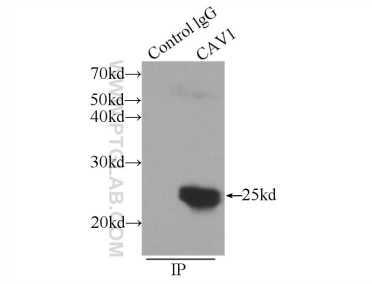
Various lysates were subjected to SDS PAGE followed by western blot with 16447-1-AP (Caveolin-1 antibody) at dilution of 1:1000 incubated at room temperature for 1.5 hours.



WB result of Caveolin-1 antibody (16447-1-AP; 1:3000; incubated at room temperature for 1.5 hours) with sh-Control and sh-Caveolin-1 transfected HeLa cells.



Immunohistochemical analysis of paraffin-embedded human breast cancer tissue slide using 16447-1-AP (Caveolin-1 antibody) at dilution of 1:200 (under 10x lens). Heat mediated antigen retrieval with Tris-EDTA buffer (pH 9.0).



IP Result of anti-Caveolin-1 (IP:16447-1-AP, 3ug; Detection:16447-1-AP 1:500) with A549 cells lysate 1200ug.