

À des fins de recherche uniquement

# Anticorps Polyclonal de lapin anti-MCM8



Numéro de catalogue: 16451-1-AP

6 Publications

## Informations de base

Numéro de catalogue:  
16451-1-AP

Taille:  
150ul, Concentration: 550 µg/ml by Nanodrop and 220 µg/ml by Bradford method using BSA as the standard;

Hôte:  
Lapin

Isotype:  
IgG

Immunogen Catalog Number:  
AG8696

Numéro d'acquisition GenBank:  
BC008830

Identification du gène (NCBI):  
84515

Nom complet:  
minichromosome maintenance complex component 8

MW calculé  
880 aa, 98 kDa

MW observés:  
95 kDa

Méthode de purification:  
Purification par affinité contre l'antigène

Dilutions recommandées:  
WB 1:1000-1:5000  
IP 0.5-4.0 ug for IP and 1:200-1:1000 for WB

## Applications

Applications testées:  
IP, WB, ELISA

Demandes citées:  
CoIP, IF, WB

Spécificité de l'espèce:  
Humain, rat, souris

Espèces citées:  
Humain

Contrôles positifs:

WB : cellules HEK-293T, cellules NIH/3T3

IP : cellules NIH/3T3,

## Informations générales

MCM8, also named as Minichromosome maintenance 8, is a 840 amino acid protein, which belongs to the MCM family. MCM8 is expressed highly in placenta, lung and pancreas and various tumors with highest levels in colon and lung cancers. MCM8 is a component of the MCM8-MCM9 complex, which involved in homologous recombination repair following DNA interstrand cross-links and plays a key role during gametogenesis. MCM8 exists some isoforms with MV 94 kDa and 70 kDa.

## Publications notables

Autrice	Pubmed ID	Journal	Application
Anna Klucnika	36355348	J Cell Biol	WB,IF,CoIP
Jen-Wei Huang	32528060	Nat Commun	WB
Kang Liu	32647118	Cell Death Dis	WB

## Stockage

Stockage:

Stocker à -20°C. Stable pendant un an après l'expédition.

Tampon de stockage:

PBS avec azoture de sodium à 0,02 % et glycérol à 50 % pH 7,3

L'aliquotage n'est pas nécessaire pour le stockage à -20C

\*\*\* Les 20ul contiennent 0,1% de BSA.

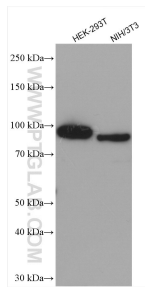
For technical support and original validation data for this product please contact:

T: 1 (888) 4PTGLAB (1-888-478-4522) (toll free in USA), or 1(312) 455-8498 (outside USA)

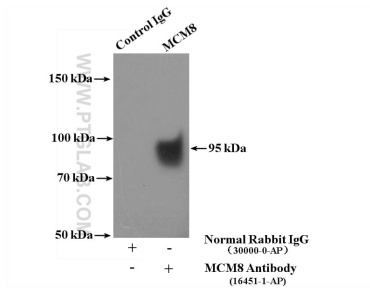
E: proteintech@ptglab.com  
W: ptglab.com

This product is exclusively available under Proteintech Group brand and is not available to purchase from any other manufacturer.

## Données de validation sélectionnées



Various lysates were subjected to SDS PAGE followed by western blot with 16451-1-AP (MCM8 antibody) at dilution of 1:2500 incubated at room temperature for 1.5 hours.



IP Result of anti-MCM8 (IP:16451-1-AP, 4ug; Detection:16451-1-AP 1:300) with NIH/3T3 cells lysate 4000ug.