

À des fins de recherche uniquement

# Anticorps Polyclonal de lapin anti-AP3D1



Numéro de catalogue: 16454-1-AP

2 Publications

## Informations de base

Numéro de catalogue:

16454-1-AP

Taille:

150ul, Concentration: 600 µg/ml by Nanodrop and 333 µg/ml by Bradford method using BSA as the standard;

Hôte:

Lapin

Isotype:

IgG

Immunogen Catalog Number:

AG9390

Numéro d'acquisition GenBank:

BC010065

Identification du gène (NCBI):

8943

Nom complet:

adaptor-related protein complex 3, delta 1 subunit

MW calculé

1153 aa, 130 kDa

MW observés:

110 kDa

Méthode de purification:

Purification par affinité contre l'antigène

Dilutions recommandées:

WB 1:500-1:3000

IF 1:200-1:800

## Applications

Applications testées:

IF, WB, ELISA

Demandes citées:

IF, WB

Spécificité de l'espèce:

Humain, rat, souris

Espèces citées:

rat, souris

Contrôles positifs:

WB : cellules Jurkat, cellules HeLa, cellules HepG2, cellules NIH/3T3

IF : cellules MCF-7,

## Informations générales

Adaptor protein (AP) complexes are cytosolic heterotetramers that mediate the sorting of membrane proteins in the secretory and endocytic pathways. AP3D1 is a subunit of the AP-3 complex which is composed of two large adaptins (AP3D1 and AP3B1 or AP3B2), a medium adaptin (AP3M1 or AP3M2) and a small adaptin (APS1 or AP3S2). AP-3 complex is associated with the Golgi region as well as more peripheral structures. It facilitates the budding of vesicles from the Golgi membrane and may be directly involved in trafficking to lysosomes.

## Publications notables

Autrice	Pubmed ID	Journal	Application
Elaine Zayas Marcelino da Silva	28273137	PLoS One	IF
Wan Du	33627378	Cancer Discov	WB,IF

## Stockage

Stockage:

Stocker à -20°C. Stable pendant un an après l'expédition.

Tampon de stockage:

PBS avec azoture de sodium à 0,02 % et glycérol à 50 % pH 7,3

L'aliquotage n'est pas nécessaire pour le stockage à -20C

\*\*\* Les 20ul contiennent 0,1% de BSA.

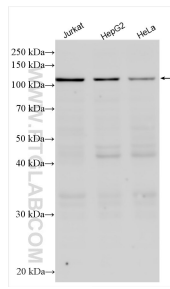
For technical support and original validation data for this product please contact:

T: 1 (888) 4PTGLAB (1-888-478-4522) (toll free in USA), or 1(312) 455-8498 (outside USA)

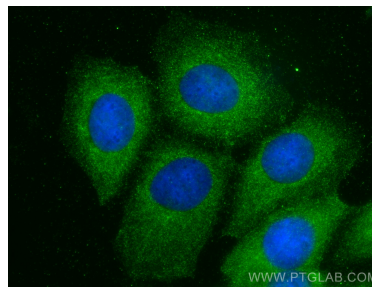
E: [proteintech@ptglab.com](mailto:proteintech@ptglab.com)  
W: [ptglab.com](http://ptglab.com)

This product is exclusively available under Proteintech Group brand and is not available to purchase from any other manufacturer.

## Données de validation sélectionnées



Various lysates were subjected to SDS PAGE followed by western blot with 16454-1-AP (AP3D1 antibody) at dilution of 1:1500 incubated at room temperature for 1.5 hours.



Immunofluorescent analysis of (-20°C Methanol) fixed MCF-7 cells using AP3D1 antibody (16454-1-AP) at dilution of 1:400 and CoraLite® 488-Conjugated AffiniPure Goat Anti-Rabbit IgG(H+L).