

À des fins de recherche uniquement

Anticorps Polyclonal de lapin anti-XPA



Numéro de catalogue: 16462-1-AP

5 Publications

Informations de base

Numéro de catalogue:
16462-1-AP

Taille:
150ul, Concentration: 220 µg/ml by Nanodrop and 220 µg/ml by Bradford method using BSA as the standard;

Hôte:
Lapin

Isotype:
IgG

Immunogen Catalog Number:
AG9536

Numéro d'acquisition GenBank:
BC014965

Identification du gène (NCBI):
7507

Nom complet:
xeroderma pigmentosum, complementation group A

MW calculé
374aa,42 kDa; 273aa,31 kDa

MW observés:
40 kDa

Méthode de purification:
Purification par affinité contre l'antigène

Dilutions recommandées:
WB 1:200-1:1000
IP 0.5-4.0 ug for IP and 1:200-1:1000 for WB
IF 1:50-1:500

Applications

Applications testées:
FC, IF, IP, WB, ELISA

Demandes citées:
IF, WB

Spécificité de l'espèce:
Humain, souris

Espèces citées:
Humain, souris

Contrôles positifs:

WB : cellules L02, cellules HeLa, cellules MCF-7

IP : cellules L02,

IF : cellules HepG2,

Informations générales

XPA, also named as DNA repair protein complementing XP-A cells, is a 272 amino acid protein, which belongs to the XPA family. XPA is expressed in various cell lines and in skin fibroblasts. XPA is involved in DNA excision repair. Initiates repair by binding to damaged sites with various affinities, depending on the photoproduct and the transcriptional state of the region. XPA is required for UV-induced CHEK1 phosphorylation and the recruitment of CEP164 to cyclobutane pyrimidine dimers (CPD), sites of DNA damage after UV irradiation. The calculated molecular weight of XPA is 31 kDa, but modified XPA protein is about 40 kDa (PMID: 17848622).

Publications notables

Autrice	Pubmed ID	Journal	Application
Li-Ming Tan	31772670	J Cancer	WB
Zhe Yang	36229075	Genes Dev	WB
Jiaxin Chen	36415059	Adv Healthc Mater	WB,IF

Stockage

Stockage:

Stocker à -20°C. Stable pendant un an après l'expédition.

Tampon de stockage:

PBS avec azoture de sodium à 0,02 % et glycérol à 50 % pH 7,3

L'aliquotage n'est pas nécessaire pour le stockage à -20C

*** Les 20ul contiennent 0,1% de BSA.

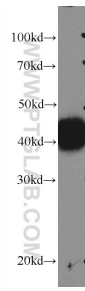
For technical support and original validation data for this product please contact:

T: 1 (888) 4PTGLAB (1-888-478-4522) (toll free in USA), or 1(312) 455-8498 (outside USA)

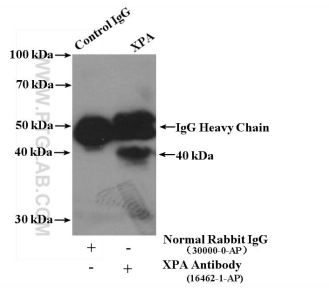
E: proteintech@ptglab.com
W: ptglab.com

This product is exclusively available under Proteintech Group brand and is not available to purchase from any other manufacturer.

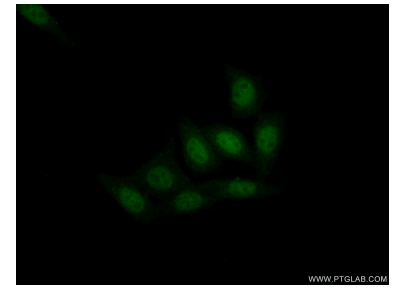
Données de validation sélectionnées



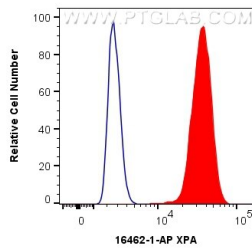
L02 cells were subjected to SDS PAGE followed by western blot with 16462-1-AP (XPA Antibody) at dilution of 1:300 incubated at room temperature for 1.5 hours.



IP result of anti-XPA (IP:16462-1-AP, 4ug; Detection:16462-1-AP 1:300) with L02 cells lysate 3000 ug.



Immunofluorescent analysis of (10% Formaldehyde) fixed HepG2 cells using 16462-1-AP (XPA antibody) at dilution of 1:50 and Alexa Fluor 488-conjugated AffiniPure Goat Anti-Rabbit IgG(H+L).



1X10⁶ HepG2 cells were intracellularly stained with 0.4 ug Anti-Human XPA (16462-1-AP) and CoraLite@488-Conjugated AffiniPure Goat Anti-Rabbit IgG(H+L) at dilution 1:1000 (red), or 0.4 ug Isotype Control. Cells were fixed and permeabilized with Transcription Factor Staining Buffer Kit (PF00011).