

À des fins de recherche uniquement

Anticorps Polyclonal de lapin anti-CDC25C



Numéro de catalogue: 16485-1-AP

Phare

23 Publications

Informations de base

Numéro de catalogue:
16485-1-AP

Taille:
150ul, Concentration: 900 µg/ml by Nanodrop and 367 µg/ml by Bradford method using BSA as the standard;

Hôte:
Lapin

Isotype:
IgG

Immunogen Catalog Number:
AG9607

Numéro d'acquisition GenBank:
BC019089

Identification du gène (NCBI):
995

Nom complet:
cell division cycle 25 homolog C (S. pombe)

MW calculé
473 aa, 53 kDa

MW observés:
53 kDa

Méthode de purification:
Purification par affinité contre l'antigène

Dilutions recommandées:
WB 1:2000-1:16000
IP 0.5-4.0 ug for IP and 1:500-1:2000 for WB
IHC 1:50-1:500

Applications

Applications testées:
FC, IHC, IP, WB, ELISA

Demandes citées:
IHC, IP, WB

Spécificité de l'espèce:
Humain

Espèces citées:
Humain, souris

Remarque-IHC: il est suggéré de démasquer l'antigène avec un tampon de TE buffer pH 9.0; (*) A défaut, le démasquage de l'antigène peut être effectué avec un tampon citrate pH 6,0.

Contrôles positifs:

WB : cellules HEK-293, cellules HeLa, cellules HepG2, cellules K-562, cellules Raji

IP : cellules K-562,

IHC : tissu de cancer du côlon humain, tissu de cancer du foie humain

Informations générales

The cell division cycle 25 (CDC25) family of proteins are highly conserved dual specificity phosphatases that activate cyclin-dependent kinase (CDK) complexes, which in turn regulate progression through the cell division cycle. CDC25C (cell division cycle 25 homolog C) is one of the 3 isoforms of CDC25 in mammalian cells. It is present in the cytoplasm of asynchronously growing human cells (PMID:10330186). And it may be phosphorylated by its own substrate, an active cdc2-cyclin B complex, to create an autoactivation loop (PMID:7937793). It can be hyperphosphorylated to get the active form of 70 kDa (PMID:18296513). CDC25C has some isoforms with molecular mass of 46-53 kDa.

Publications notables

Autrice	Pubmed ID	Journal	Application
Hui-Ting Liu	34667869	Laryngoscope Investig Otolaryngol	WB
Huan Ma	33573708	Oncol Res	WB
Yonglong Zhang	31599189	Cell Cycle	WB

Stockage

Stockage:

Stocker à -20°C. Stable pendant un an après l'expédition.

Tampon de stockage:

PBS avec azoture de sodium à 0,02 % et glycérol à 50 % pH 7,3

L'aliquoteage n'est pas nécessaire pour le stockage à -20°C

*** Les 20ul contiennent 0,1% de BSA.

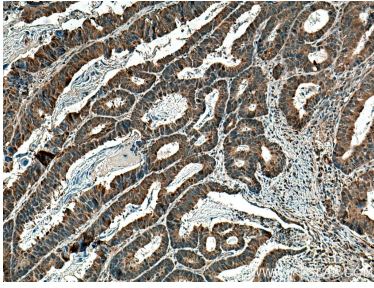
For technical support and original validation data for this product please contact:

T: 1 (888) 4PTGLAB (1-888-478-4522) (toll free in USA), or 1(312) 455-8498 (outside USA)

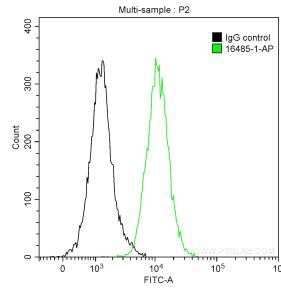
E: proteintech@ptglab.com
W: ptglab.com

This product is exclusively available under Proteintech Group brand and is not available to purchase from any other manufacturer.

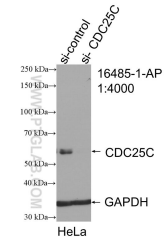
Données de validation sélectionnées



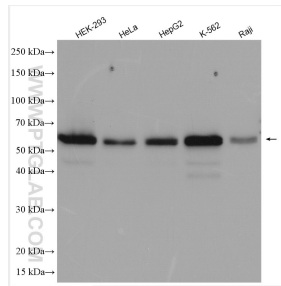
Immunohistochemical analysis of paraffin-embedded human colon cancer tissue slide using 16485-1-AP (CDC25C antibody) at dilution of 1:200 (under 10x lens). Heat mediated antigen retrieval with Tris-EDTA buffer (pH 9.0).



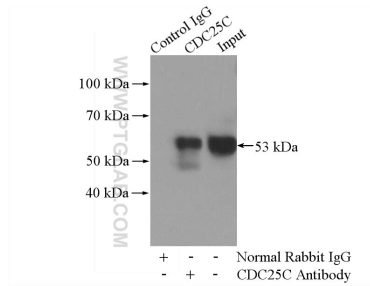
1×10^6 K-562 cells were intracellularly stained with 0.2 μ g Anti-Human CDC25C (16485-1-AP) and CoraLite[®]488-Conjugated AffiniPure Goat Anti-Rabbit IgG(H+L) at dilution 1:1000 (green), and 0.2 μ g Control Antibody. Cells were fixed with 90% MeOH.



WB result of CDC25C antibody (16485-1-AP; 1:4000; incubated at room temperature for 1.5 hours) with sh-Control and sh-CDC25C transfected HeLa cells.



Various lysates were subjected to SDS PAGE followed by western blot with 16485-1-AP (CDC25C antibody) at dilution of 1:8000 incubated at room temperature for 1.5 hours.



IP Result of anti-CDC25C (IP:16485-1-AP, 4 μ g; Detection:16485-1-AP 1:1000) with K-562 cells lysate 3600 μ g.