

À des fins de recherche uniquement

Anticorps Polyclonal de lapin anti-RPL26L1



Numéro de catalogue: 16487-1-AP

1 Publications

Informations de base

Numéro de catalogue:
16487-1-AP

Taille:
150ul, Concentration: 133 µg/ml by
Bradford method using BSA as the
standard;

Hôte:
Lapin

Isotype:
IgG

Immunogen Catalog Number:
AG9609

Numéro d'acquisition GenBank:
BC017360

Identification du gène (NCBI):
51121

Nom complet:
ribosomal protein L26-like 1

MW calculé
145 aa, 17 kDa

MW observés:
22-25 kDa

Méthode de purification:
Purification par affinité contre
l'antigène

Dilutions recommandées:
WB 1:500-1:1000
IF 1:50-1:500

Applications

Applications testées:
IF, WB, ELISA

Demandes citées:
WB

Spécificité de l'espèce:
Humain, rat, souris

Espèces citées:
rat

Contrôles positifs:

WB : cellules HEK-293, cellules K-562, cellules MCF-7

IF : cellules HeLa,

Informations générales

RPL26L1, also named as RPL26P1, belongs to the universal ribosomal protein uL24 family. RPL26L1 shares high sequence similarity with ribosomal protein L26 and plays a role in protein synthesis (PMID: 31673979). The molecular mass of RPL26L1 is 17 kDa. Studies have shown that RPL26L1 is related to autism spectrum disorder and is one of the potential biomarkers of the neurodegenerative disease Friedreich's ataxia. In addition, RPL26L1 may be closely related with SLE development (PMID: 31889427).

Publications notables

Autrice	Pubmed ID	Journal	Application
Qiang Zhang	35884735	Brain Sci	WB

Stockage

Stockage:
Stocker à -20°C. Stable pendant un an après l'expédition.

Tampon de stockage:
PBS avec azoture de sodium à 0,02 % et glycérol à 50 % pH 7,3
L'aliquotage n'est pas nécessaire pour le stockage à -20C

*** Les 20ul contiennent 0,1% de BSA.

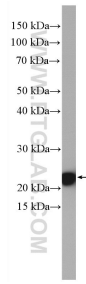
For technical support and original validation data for this product please contact:

T: 1 (888) 4PTGLAB (1-888-478-4522) (toll free
in USA), or 1(312) 455-8498 (outside USA)

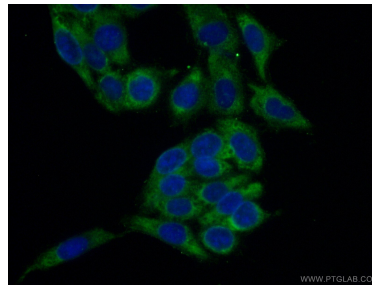
E: proteintech@ptglab.com
W: ptglab.com

This product is exclusively available under Proteintech Group brand and is not available to purchase from any other manufacturer.

Données de validation sélectionnées



HEK-293 cells were subjected to SDS PAGE followed by western blot with 16487-1-AP (RPL26L1 antibody) at dilution of 1:600 incubated at room temperature for 1.5 hours.



Immunofluorescent analysis of (-20°C Ethanol) fixed HeLa cells using 16487-1-AP (RPL26L1 antibody) at dilution of 1:50 and Alexa Fluor 488-conjugated AffiniPure Goat Anti-Rabbit IgG(H+L).