

À des fins de recherche uniquement

Anticorps Polyclonal de lapin anti-SUPT5H



Numéro de catalogue: 16511-1-AP

Phare

2 Publications

Informations de base

Numéro de catalogue:
16511-1-AP

Taille:
150ul, Concentration: 1000 µg/ml by
Nanodrop and 400 µg/ml by Bradford
method using BSA as the standard;

Hôte:
Lapin

Isotype:
IgG

Immunogen Catalog Number:
AG9728

Numéro d'acquisition GenBank:
BC024203

Identification du gène (NCBI):
6829

Nom complet:
suppressor of Ty 5 homolog (S.
cerevisiae)

MW calculé
1087 aa, 121 kDa

MW observés:
140-150 kDa

Méthode de purification:
Purification par affinité contre
l'antigène

Dilutions recommandées:
WB 1:500-1:1000
IP 0.5-4.0 ug for IP and 1:500-1:1000
for WB
IF 1:50-1:500

Applications

Applications testées:
IF, IP, WB, ELISA

Demandes citées:
WB

Spécificité de l'espèce:
Humain, rat, souris

Espèces citées:
Humain

Contrôles positifs:

WB : cellules HeLa, cellules HepG2

IP : cellules HeLa,

IF : cellules HepG2,

Informations générales

SUPT5H, also named as DSIF p160, is a 1087 amino acid protein, which belongs to the SPT5 family. SUPT5H localizes in the nucleus and is ubiquitously expressed. SUPT5H is a component of the DRB sensitivity-inducing factor complex (DSIF complex), which regulates mRNA processing and transcription elongation by RNA polymerase II. SUPT5H is modified through phosphorylation and methylated, so the molecular weight of SUPT5H might be 140-150 kDa.

Publications notables

Autrice	Pubmed ID	Journal	Application
Shibin Hu	34534457	Mol Cell	WB
Shibin Hu	37080207	Mol Cell	WB

Stockage

Stockage:

Stocker à -20°C. Stable pendant un an après l'expédition.

Tampon de stockage:

PBS avec azoture de sodium à 0,02 % et glycérol à 50 % pH 7,3

L'aliquotage n'est pas nécessaire pour le stockage à -20C

*** Les 20ul contiennent 0,1% de BSA.

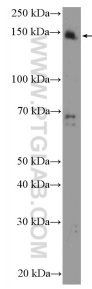
For technical support and original validation data for this product please contact:

T: 1 (888) 4PTGLAB (1-888-478-4522) (toll free
in USA), or 1(312) 455-8498 (outside USA)

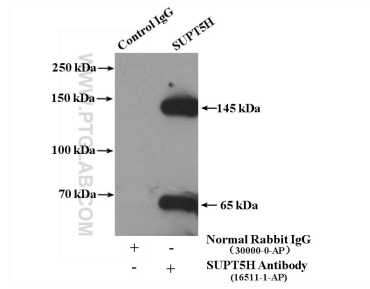
E: proteintech@ptglab.com
W: ptglab.com

This product is exclusively available under Proteintech Group brand and is not available to purchase from any other manufacturer.

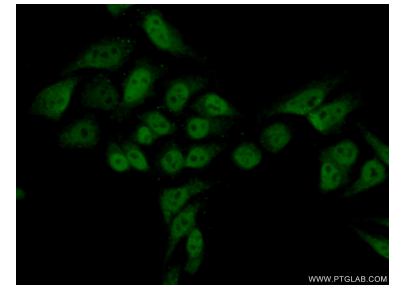
Données de validation sélectionnées



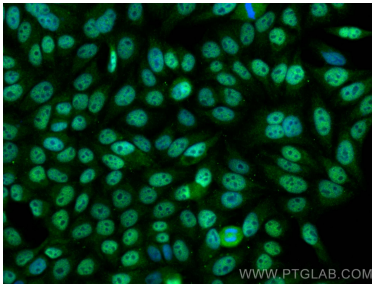
HeLa cells were subjected to SDS PAGE followed by western blot with 16511-1-AP (SUPT5H Antibody) at dilution of 1:600 incubated at room temperature for 1.5 hours.



IP Result of anti-SUPT5H (IP:16511-1-AP, 4ug; Detection:16511-1-AP 1:500) with HeLa cells lysate 3200ug.



Immunofluorescent analysis of (10% Formaldehyde) fixed HepG2 cells using 16511-1-AP (SUPT5H antibody) at dilution of 1:50 and Alexa Fluor 488-conjugated AffiniPure Goat Anti-Rabbit IgG(H+L).



Immunofluorescent analysis of (4% PFA) fixed HepG2 cells using SUPT5H antibody (16511-1-AP) at dilution of 1:200 and CoraLite®488-Conjugated AffiniPure Goat Anti-Rabbit IgG(H+L).