

À des fins de recherche uniquement

Anticorps Polyclonal de lapin anti-Desmin



Numéro de catalogue: 16520-1-AP

49 Publications

Informations de base

Numéro de catalogue:

16520-1-AP

Taille:

150ul, Concentration: 700 µg/ml by Nanodrop;

Hôte:

Lapin

Isotype:

IgG

Immunogen Catalog Number:

AG9742

Numéro d'acquisition GenBank:

BC032116

Identification du gène (NCBI):

1674

Nom complet:

desmin

MW calculé

470 aa, 54 kDa

MW observés:

52-53 kDa

Méthode de purification:

Purification par affinité contre l'antigène

Dilutions recommandées:

WB 1:5000-1:50000

IP 0.5-4.0 ug for IP and 1:1000-1:6000 for WB

IHC 1:500-1:2000

IF 1:200-1:800

Applications

Applications testées:

FC, IF, IHC, IP, WB, ELISA

Demandes citées:

IF, IHC, IP, WB

Spécificité de l'espèce:

Humain, rat, souris

Espèces citées:

Humain, rat, souris

Remarque-IHC: il est suggéré de démasquer l'antigène avec un tampon de TE buffer pH 9,0; (*) À défaut, le démasquage de l'antigène peut être effectué avec un tampon citrate pH 6,0.

Contrôles positifs:

WB : cellules C2C12, tissu cardiaque de rat, tissu cardiaque de souris, tissu cardiaque humain

IP : tissu cardiaque de souris,

IHC : tissu cardiaque humain, tissu d'appendice humain, tissu de côlon humain, tissu de muscle squelettique humain, tissu d'hystéromyome humain, tissu placentaire humain

IF : cellules C2C12, tissu cardiaque de rat, tissu cardiaque de souris

Informations générales

Desmin is the main intermediate filament protein in skeletal and cardiac muscle cells and is essential for both the structural integrity and the survival of muscle cells. As an abundant muscle-specific protein, desmin has been widely used as a marker of muscle derived tumors. Anti-desmin is also valuable in the differential diagnosis of tumors of uncertain origin.

Publications notables

Autrice	Pubmed ID	Journal	Application
Hejie Wang	36178582	In Vitro Cell Dev Biol Anim	WB
Shuai Yu	34616727	Front Cell Dev Biol	WB
Qing Ye	34734004	Ann Transl Med	IF

Stockage

Stockage:

Stocker à -20°C. Stable pendant un an après l'expédition.

Tampon de stockage:

PBS avec azoture de sodium à 0,02 % et glycérol à 50 % pH 7,3

L'aliquotage n'est pas nécessaire pour le stockage à -20C

*** Les 20ul contiennent 0,1% de BSA.

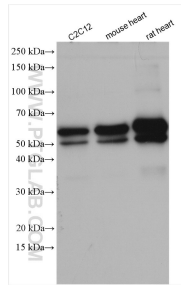
For technical support and original validation data for this product please contact:

T: 1 (888) 4PTGLAB (1-888-478-4522) (toll free in USA), or 1(312) 455-8498 (outside USA)

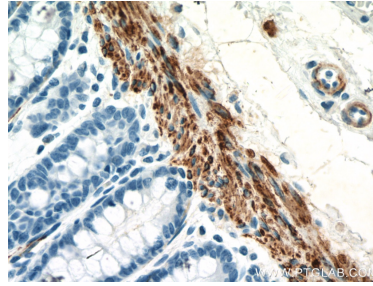
E: proteintech@ptglab.com
W: ptglab.com

This product is exclusively available under Proteintech Group brand and is not available to purchase from any other manufacturer.

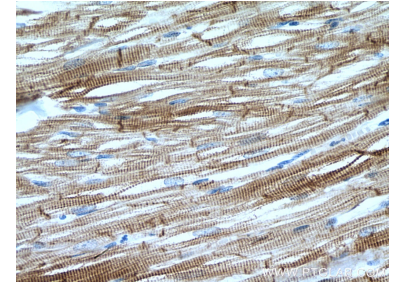
Données de validation sélectionnées



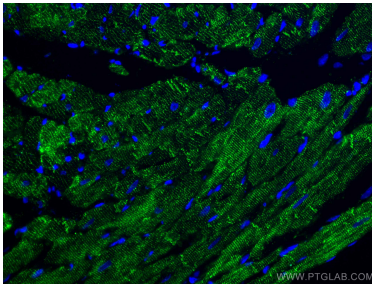
Various lysates were subjected to SDS PAGE followed by western blot with 16520-1-AP (Desmin antibody) at dilution of 1:20000 incubated at room temperature for 1.5 hours.



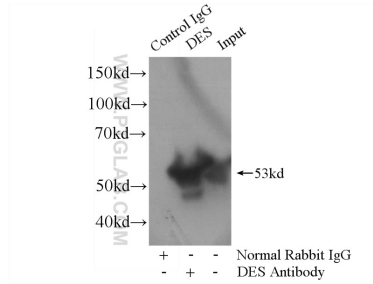
Immunohistochemical analysis of paraffin-embedded human colon tissue slide using 16520-1-AP (Desmin antibody) at dilution of 1:12800 (under 40x lens). Heat mediated antigen retrieval with Tris-EDTA buffer (pH 9.0).



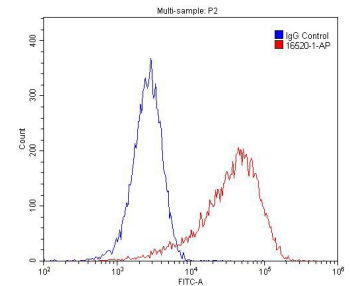
Immunohistochemical analysis of paraffin-embedded human heart tissue slide using 16520-1-AP (Desmin antibody) at dilution of 1:1000 (under 40x lens). Heat mediated antigen retrieval with Tris-EDTA buffer (pH 9.0).



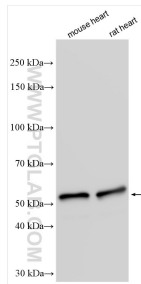
Immunofluorescent analysis of (4% PFA) fixed rat heart tissue using Desmin antibody (16520-1-AP) at dilution of 1:200 and CoralLite@488-Conjugated AffiniPure Goat Anti-Rabbit IgG(H+L).



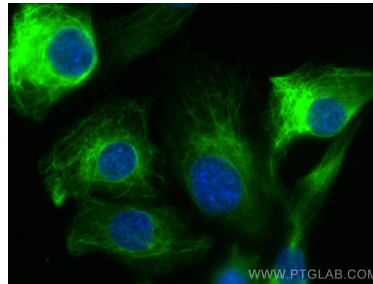
IP Result of anti-Desmin (IP:16520-1-AP, 4ug; Detection:16520-1-AP 1:3000) with mouse heart tissue lysate 8000ug.



1X10⁶ C2C12 cell were stained with 0.2ug Desmin antibody (16520-1-AP, red) and control antibody (blue). Alexa Fluor 488-conjugated AffiniPure Goat Anti-Rabbit IgG(H+L) with dilution 1:1500. Cells were fixed with 4% PFA and permeabilized with 0.1% Triton X-100.



Various lysates were subjected to SDS PAGE followed by western blot with 16520-1-AP (Desmin antibody) at dilution of 1:80000 incubated at room temperature for 1.5 hours.



Immunofluorescent analysis of (-20°C Methanol) fixed C2C12 cells using Desmin antibody (16520-1-AP) at dilution of 1:400 and CoralLite@488-Conjugated AffiniPure Goat Anti-Rabbit IgG(H+L).