

À des fins de recherche uniquement

Anticorps Polyclonal de lapin anti-PMEPA1



Numéro de catalogue: 16521-1-AP

Phare

6 Publications

Informations de base

Numéro de catalogue:
16521-1-AP

Taille:
150ul, Concentration: 650 µg/ml by Nanodrop and 400 µg/ml by Bradford method using BSA as the standard;

Hôte:
Lapin

Isotype:
IgG

Immunogen Catalog Number:
AG9744

Numéro d'acquisition GenBank:
BC015918

Identification du gène (NCBI):
56937

Nom complet:
prostate transmembrane protein, androgen induced 1

MW calculé:
287 aa, 32 kDa

MW observés:
32-36 kDa

Méthode de purification:
Purification par affinité contre l'antigène

Dilutions recommandées:
WB 1:500-1:2000
IF 1:10-1:100

Applications

Applications testées:
IF, WB, ELISA

Demandes citées:
IF, IHC, WB

Spécificité de l'espèce:
Humain, rat, souris

Espèces citées:
Humain, souris

Contrôles positifs:

WB : cellules L02, cellules U2OS

IF : cellules PC-3,

Informations générales

PMEPA1, also known as TMEPA1, was first discovered as androgen inducible gene in hormone responsive LNCaP cells. PMEPA1 is highly expressed in various solid tumors and is known to play important roles in the transforming growth factor- β (TGF- β) signaling pathway (PMID: 27697531).

Publications notables

Autrice	Pubmed ID	Journal	Application
Dongxu Qiu	34777336	Front Immunol	WB,IHC
Masaru Koido	27697531	Biochem Biophys Res Commun	WB
Morgane Morabito	31328883	EMBO Mol Med	WB

Stockage

Stockage:

Stocker à -20°C. Stable pendant un an après l'expédition.

Tampon de stockage:

PBS avec azoture de sodium à 0,02 % et glycérol à 50 % pH 7,3

L'aliquotage n'est pas nécessaire pour le stockage à -20C

*** Les 20ul contiennent 0,1% de BSA.

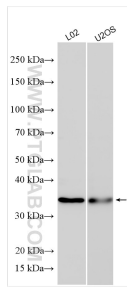
For technical support and original validation data for this product please contact:

T: 1 (888) 4PTGLAB (1-888-478-4522) (toll free in USA), or 1(312) 455-8498 (outside USA)

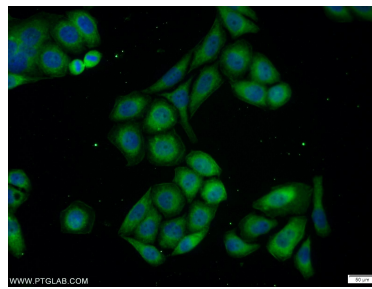
E: proteintech@ptglab.com
W: ptglab.com

This product is exclusively available under Proteintech Group brand and is not available to purchase from any other manufacturer.

Données de validation sélectionnées



Various lysates were subjected to SDS PAGE followed by western blot with 16521-1-AP (PMEPA1 antibody) at dilution of 1:1000 incubated at room temperature for 1.5 hours.



Immunofluorescent analysis of PC-3 cells using 16521-1-AP (PMEPA1 antibody) at dilution of 1:25 and Alexa Fluor 488-conjugated AffiniPure Goat Anti-Rabbit IgG(H+L).