

À des fins de recherche uniquement

# Anticorps Polyclonal de lapin anti-PALMD



Numéro de catalogue: 16531-1-AP

Phare

4 Publications

## Informations de base

Numéro de catalogue:

16531-1-AP

Taille:

150ul, Concentration: 700 µg/ml by Nanodrop and 333 µg/ml by Bradford method using BSA as the standard;

Hôte:

Lapin

Isotype:

IgG

Immunogen Catalog Number:

AG9796

Numéro d'acquisition GenBank:

BC012570

Identification du gène (NCBI):

54873

Nom complet:

palmdelphin

MW calculé

551 aa, 63 kDa

MW observés:

80 kDa

Méthode de purification:

Purification par affinité contre l'antigène

Dilutions recommandées:

WB 1:500-1:2000

IP 0.5-4.0 ug for IP and 1:500-1:1000 for WB

IHC 1:20-1:200

## Applications

Applications testées:

IHC, IP, WB, ELISA

Demandes citées:

IF, WB

Spécificité de l'espèce:

Humain, rat, souris

Espèces citées:

Humain, souris

**Remarque-IHC: il est suggéré de démasquer l'antigène avec un tampon de TE buffer pH 9,0; (\*) À défaut, 'le démasquage de l'antigène peut être effectué avec un tampon citrate pH 6,0.**

Contrôles positifs:

WB: cellules HeLa, tissu pulmonaire de souris

IP: tissu cardiaque de souris,

IHC: tissu hépatique humain,

## Informations générales

Palmdelphin, encoded by PALMD gene, is a newly identified cytosolic isoform of paralemmin-1, a lipid raft-associated protein implicated in cell shape control. Paralemmin (Palm) is a prenyl-palmitoyl anchored membrane protein that can drive membrane and process formation in neurons. Previous finding suggest that palmdelphin may peripherally associate with endomembranes or cytoskeleton-linked structures. Palmdelphin appears to be 80 kDa in Western blotting, larger than the predicated of 63 kDa, and this may be due to the acidic nature of this protein or its posttranslational modification.

## Publications notables

Autrice	Pubmed ID	Journal	Application
N Dashzeveg	24810057	Cell Death Dis	WB
Sean-Patrick Riechers	26908611	Hum Mol Genet	WB
Min-Yun Cai	35494064	Front Oncol	WB

## Stockage

Stockage:

Stocker à -20°C. Stable pendant un an après l'expédition.

Tampon de stockage:

PBS avec azoture de sodium à 0,02 % et glycérol à 50 % pH 7,3

L'aliquotage n'est pas nécessaire pour le stockage à -20C

\*\*\* Les 20ul contiennent 0,1% de BSA.

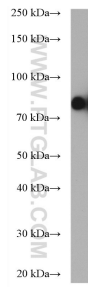
For technical support and original validation data for this product please contact:

T: 1 (888) 4PTGLAB (1-888-478-4522) (toll free in USA), or 1(312) 455-8498 (outside USA)

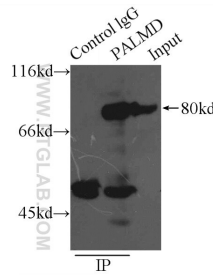
E: proteintech@ptglab.com  
W: ptglab.com

This product is exclusively available under Proteintech Group brand and is not available to purchase from any other manufacturer.

## Données de validation sélectionnées

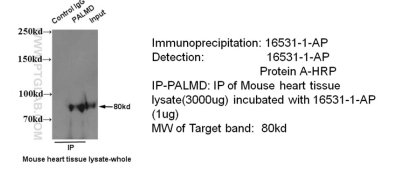


HeLa cells were subjected to SDS PAGE followed by western blot with 16531-1-AP (PALMD antibody) at dilution of 1:600 incubated at room temperature for 1.5 hours.

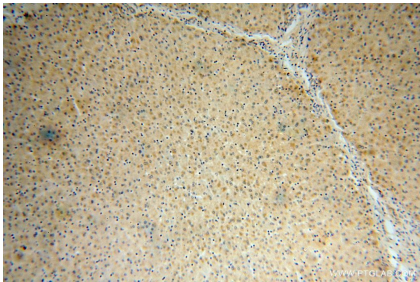


IP Result of anti-PALMD (IP:16531-1-AP, 5ug; Detection:16531-1-AP 1:500) with mouse heart tissue lysate 6000ug.

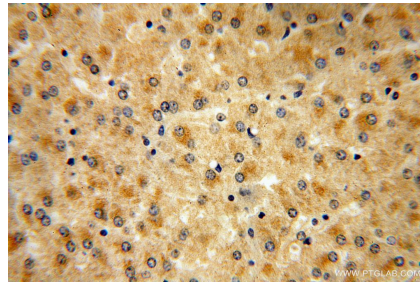
### IP & WB of 16531-1-AP with Mouse heart tissue



IP result of PALMD antibody (16531-1-AP for Ip and Detection) with mouse heart tissue lysate.



Immunohistochemical analysis of paraffin-embedded human liver using 16531-1-AP (PALMD antibody) at dilution of 1:100 (under 10x lens).



Immunohistochemical analysis of paraffin-embedded human liver using 16531-1-AP (PALMD antibody) at dilution of 1:100 (under 40x lens).